



# DESIGN REVIEW REQUEST

- DOWNTOWN DESIGN (DK)
- HISTORIC ZONING (H)
- INFILL HOUSING (IH)



J. Scott Busby, AIA

Applicant

01/31/2020

Date Filed

02/19/2020

Meeting Date (if applicable)

2-C-20-DT  
File Number(s)

## CORRESPONDENCE

All correspondence related to this application should be directed to the approved contact listed below.


- Owner    Contractor    Engineer    Architect/Landscape Architect

Scott Busby, AIA	Smee + Busby Architects, P.C.		
Name	Company		
2554 Sutherland Avenue	Knoxville,	TN	37919
Address	City	State	Zip
(865) 521-7550	sbusby@smeebusby.com		
Phone	Email		

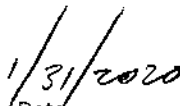
## CURRENT PROPERTY INFO

115 S. Central LLC, <u>Leigh Burch</u> /Mark Jernigan	122A South Gay Street, Knoxville, TN 37902	(865) 384-3426
Owner Name (if different from applicant)	Owner Address	Owner Phone
117 S. Central Knoxville, TN 37902	094EG017	
Property Address	Parcel ID	
Old City/Crown and Goose Final Plat	DK-W	
Neighborhood	Zoning	

## AUTHORIZATION

  
Staff Signature

  
Please Print

  
Date

  
Applicant Signature

J. Scott Busby, AIA  
Please Print

01/31/2020  
Date

# REQUEST

DOWNTOWN DESIGN

**Level 1:**

- Signs     Alteration of an existing building/structure

**Level 2:**

- Addition to an existing building/structure

**Level 3:**

- Construction of new building/structure     Site design, parking, plazas, landscape

*See required Downtown Design attachment for more details.*

- Brief description of work: Addition of 730 sf roof top enclosed bar with covered deck. New steel stair from existing space will access rooftop. Space to have a max capacity of 49 occupants. Enclosure to be set back from Central Street facade. All materials to be non-combustible.

HISTORIC ZONING

**Level 1:**

- Signs     Routine repair of siding, windows, roof, or other features, in-kind; Installation of gutters, storm windows/doors

**Level 2:**

- Major repair, removal, or replacement of architectural elements or materials     Additions and accessory structures

**Level 3:**

- Construction of a new primary building

**Level 4:**

- Relocation of a contributing structure     Demolition of a contributing structure

*See required Historic Zoning attachment for more details.*

- Brief description of work:

INFILL HOUSING

**Level 1:**

- Driveways, parking pads, access point, garages or similar facilities     Subdivisions

**Level 2:**

- Additions visible from the primary street     Changes to porches visible from the primary street

**Level 3:**

- New primary structure  
 Site built     Modular     Multi-Sectional

*See required Infill Housing attachment for more details.*

- Brief description of work:

**ATTACHMENTS**

- Downtown Design Checklist  
 Historic Zoning Design Checklist  
 Infill Housing Design Checklist

**ADDITIONAL REQUIREMENTS**

- Property Owners / Option Holders

**Level 1: \$50 • Level 2: \$100 • Level 3: \$250 • Level 4: \$500**

FEE 1:

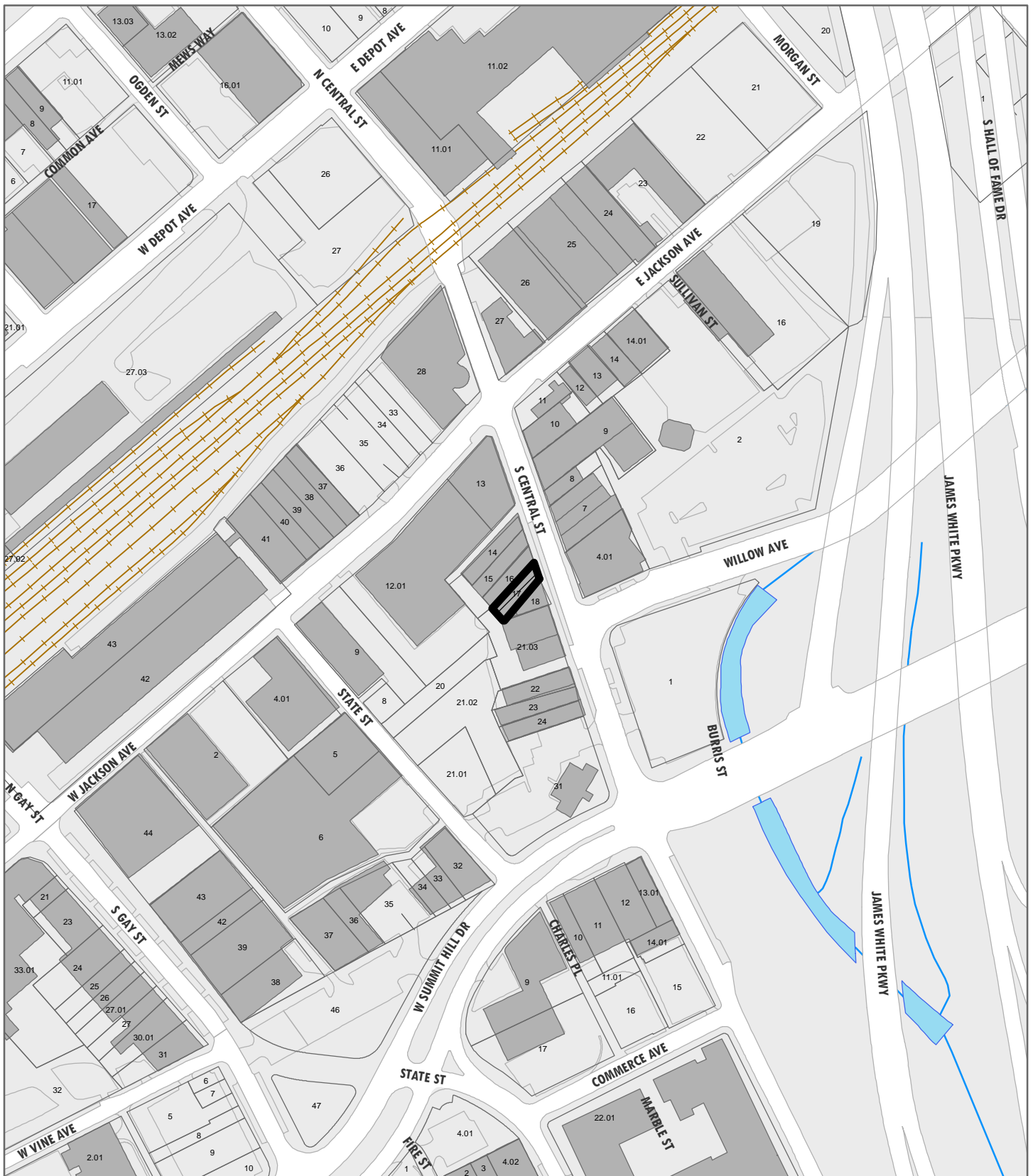
100.<sup>00</sup>

**TOTAL:**

FEE 2:

\$100.<sup>00</sup>

FEE 3:



**2-C-20-DT**

**APPLICATION FOR CERTIFICATE OF APPROPRIATENESS**

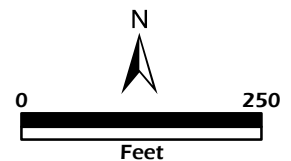
**DOWNTOWN  
DESIGN  
REVIEW  
BOARD**

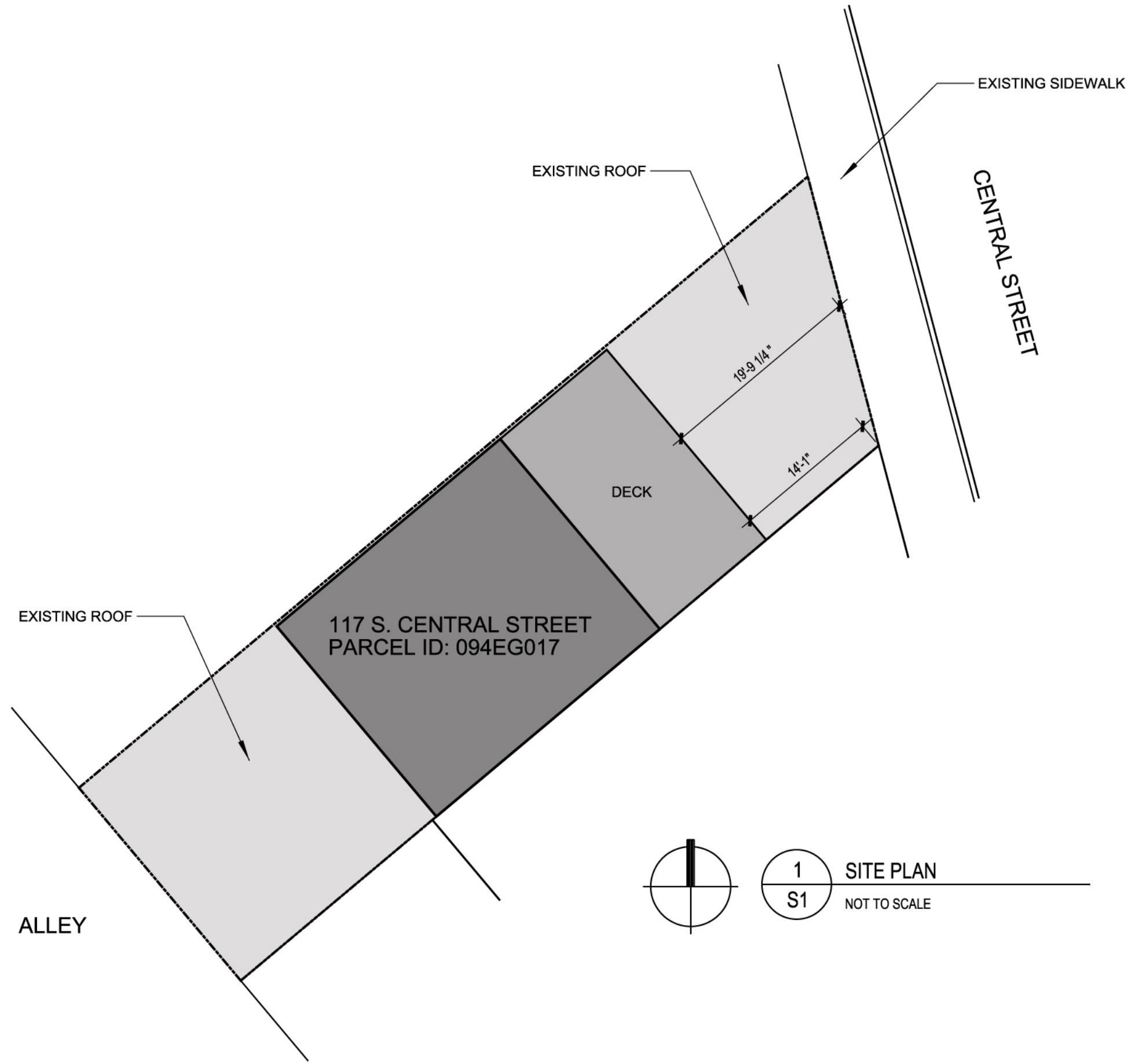


**117 S. Central St.**  
**Level 2: Addition to an existing  
building/structure**

Petitioner: **Smee and Busby Architects,  
Scott Busby**

Original Print Date: 2/11/2020  
Revised:  
Knoxville/Knox County Planning · Downtown Design Review Board



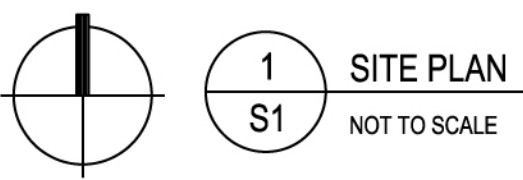


A Roof Addition for  
**117 S. Central Avenue**  
 Knoxville, Tennessee

Project Number: 19029  
 Issue Date: 01.31.20

Drawn By: CK  
 Approved By: SB  
 Project Manager: CK  
 Principal: SB

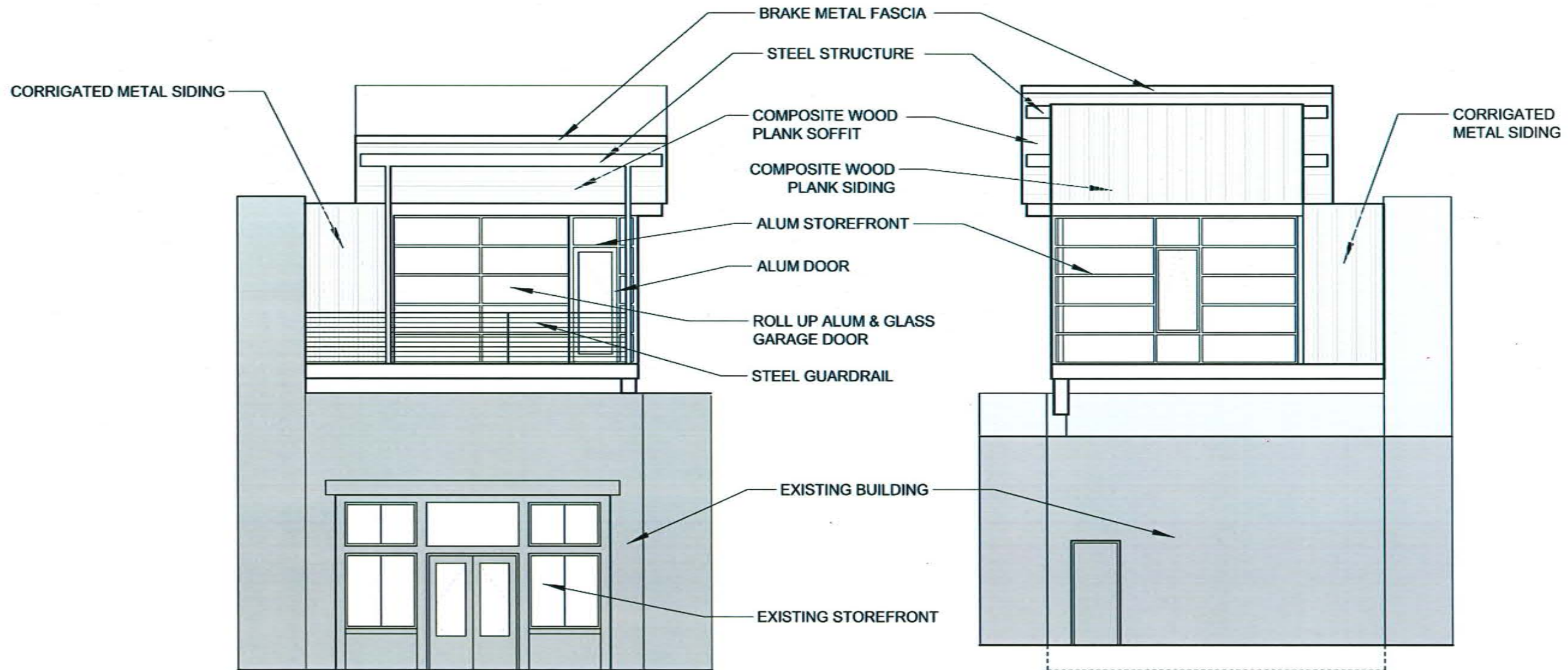
This drawing is the property of SMEE + BUSBY ARCHITECTS INC. and is not to be reproduced without prior written authorization. This drawing is intended to be used only for the project and site identified. All design information are copyright © SMEE + BUSBY ARCHITECTS INC.



**1** SITE PLAN  
**S1** NOT TO SCALE

Site Plan

S1



1 FRONT ELEVATION  
A2 1/8" = 1'-0" 0 2 4 8

2 REAR ELEVATION  
A2 1/8" = 1'-0" 0 2 4 8

A Roof Addition for  
**117 S. Central Avenue**  
Knoxville, Tennessee

Project Number: 19029  
Issue Date: 01.31.20

Drawn By: CK  
Approved By: SB  
Project Manager: CK  
Principal: SB

This drawing is the property of SMEE + BUSBY ARCHITECTS, INC. and is not to be reproduced without prior written authorization. This drawing is intended to be used only for the project and is to be identified as design information use copyright © SMEE + BUSBY ARCHITECTS, INC.

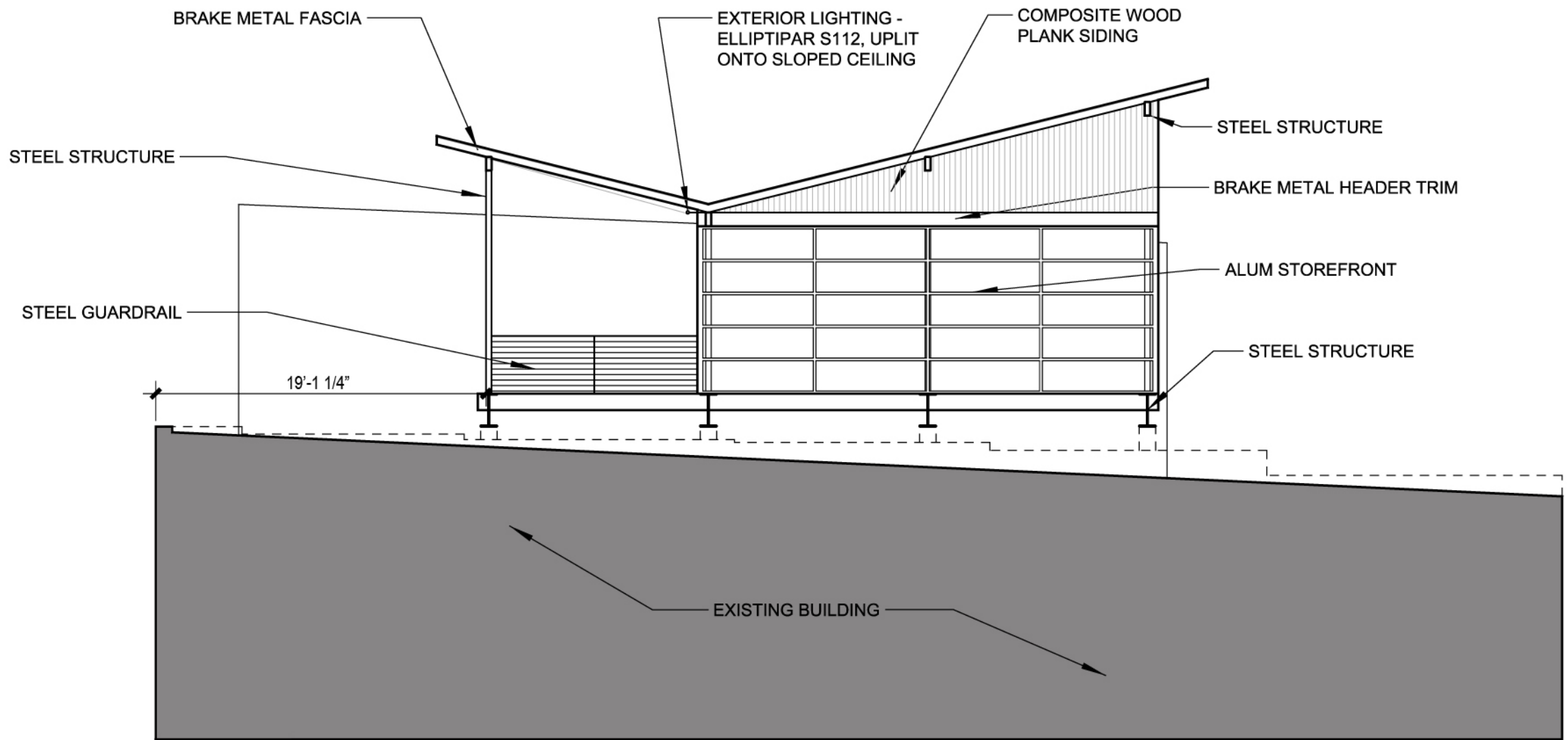
Front & Rear Elevations


A Roof Addition for  
**117 S. Central Avenue**  
 Knoxville, Tennessee

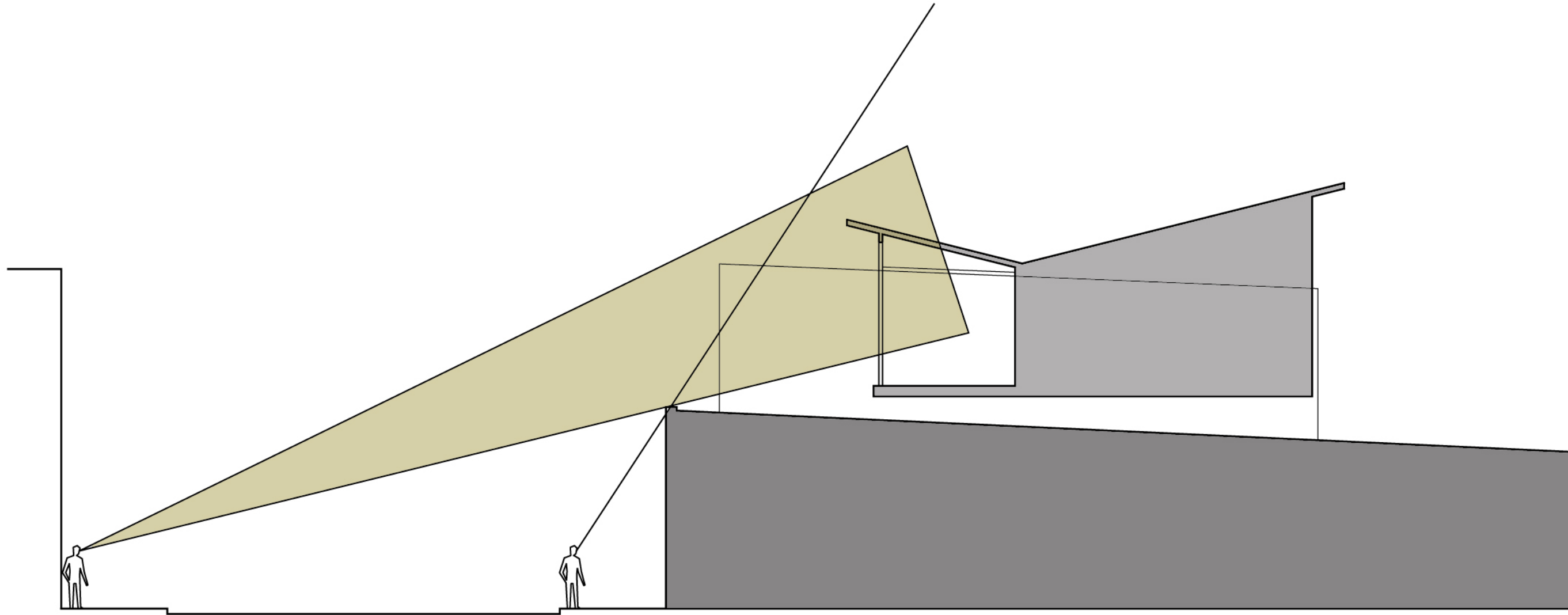
Project Number: 19029  
 Issue Date: 01.31.20  
 Drawn By: CK  
 Approved By: SB  
 Project Manager: CK  
 Principal: SB

This drawing is the property of  
 SMBE + BUSBY ARCHITECTS, INC.  
 and is not to be reproduced without  
 prior written authorization. This  
 drawing is intended to be used only for  
 the project and site identified.  
 All design information are copyright  
 © SMBE + BUSBY ARCHITECTS, INC.

Side Elevation



**1**  
**A1** SIDE ELEVATION  
 1/8" = 1'-0" 



1 STREET SECTION DIAGRAM  
A3 NOT TO SCALE

2-C-20-DT  
Revised: 3/6/2020

A Roof Addition for  
117 S. Central Avenue  
Knoxville, Tennessee

Project Number: 19029  
Issue Date: 01.31.20

Drawn By: CK  
Approved By: SB  
Project Manager: CK  
Principal: SB

This drawing is the property of SMEE + BUSBY ARCHITECTS INC. and is not to be reproduced without prior written authorization. This drawing is intended to be used only for the project and site identified. All design information are copyright © SMEE + BUSBY ARCHITECTS INC.

Street Section  
Diagram

2-C-20-DT  
Revised: 3/6/2020



117

*Carleo's*  
LOUNGE & NIGHTCLUB

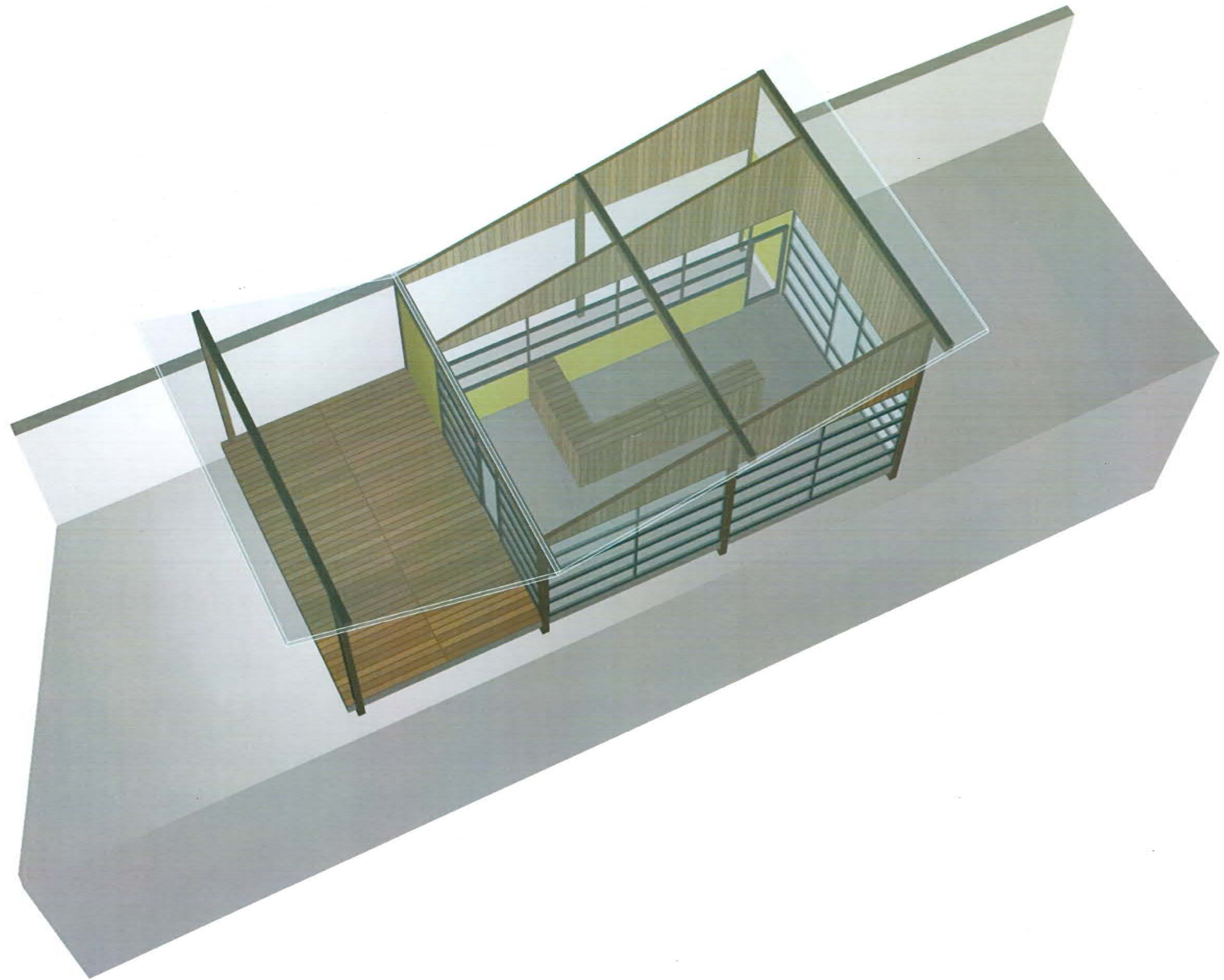
117

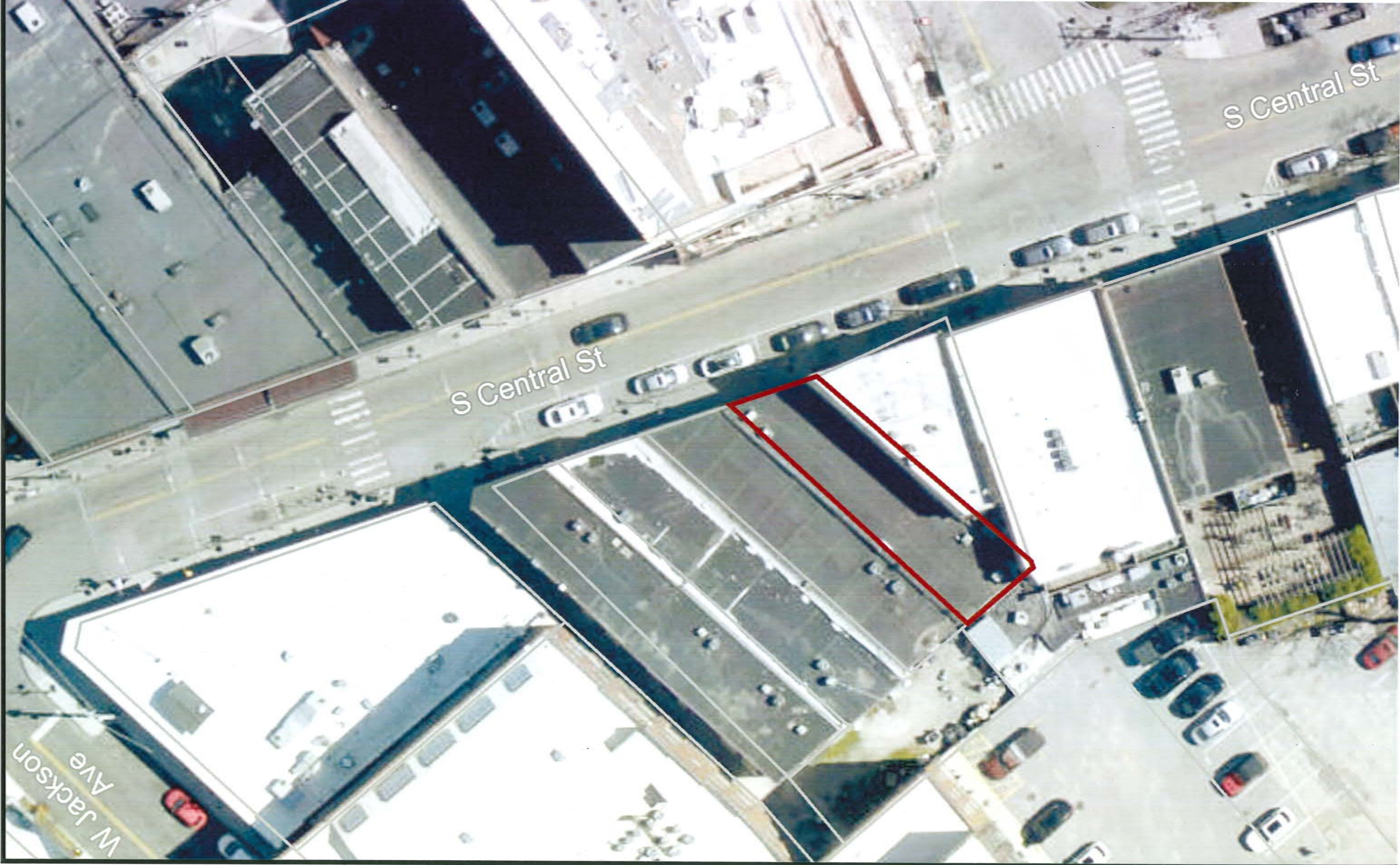
WAGON WHEEL

119







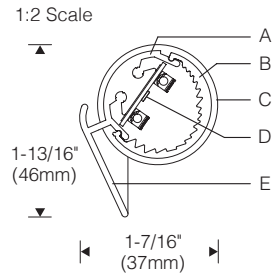


S Central St

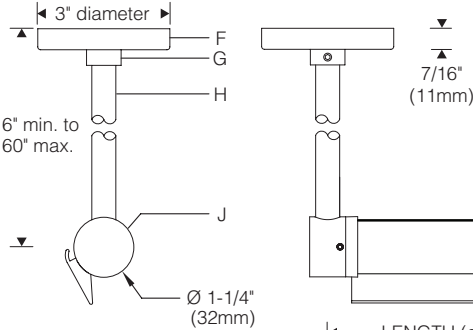
S Central St

W Jackson Ave

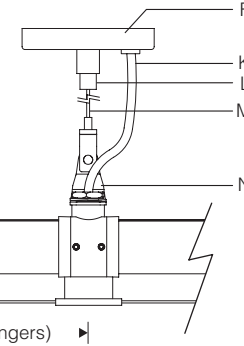
**Optical Assembly**



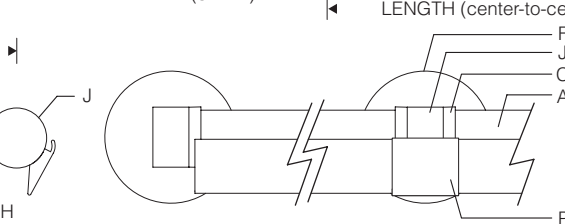
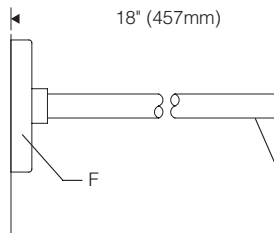
**Pendant Stem, Round Canopy** 1:4 Scale



**Cable Hanger**



**Cantilever** 1:4 Scale



LENGTH	CENTER-CENTER
2FT	24-3/4" (629mm)
3FT	36-1/2" (927mm)
4FT	48" (1219mm)
5FT	60" (1524mm)
6FT	72" (1829mm)

**Remote Driver(s)**

See remote LED driver document [MA-1357](#) for dimensions and wiring, mounting instructions.

**Specifications**

- A** Extruded aluminum heat sink/housing
- B** Extruded semi-diffuse lens
- C** Die-cast aluminum end plate 1-1/8" dia.
- D** Linear LED PCB with mid-power LEDs
- E** Integral visor (extruded aluminum)
- F** Aluminum canopy (3" dia. x 7/16" D)
- G** Slip ring with set screw
- H** Extruded aluminum pendant stem 1/2" O.D.
- J** Aluminum mounting hub (ordered separately)
- K** Cord to remote driver
- L** Cable coupler with slip ring
- M** 1/16" dia. 7x7 cable
- N** Cable gripper and leveling bracket
- P** Extruded aluminum intermediate cover

**Housing and Optic Assembly:**

Extruded aluminum heat sink/optic housing. Exterior heat sink anodized for maximum emissivity. Precision extruded polymer refractive lens with optimal dispersion.

**Finish:**

Bright anodized extruded aluminum heat sink/housing with painted finish, white or black. Formed aluminum canopy, end hubs and stems painted white or black. Painted surfaces – 6 stage pretreatment and electrostatically applied thermoset polyester powder coating for a durable abrasion, fade and corrosion resistant finish. All hardware – stainless steel or nickel plated brass.

**Mounting:**

Required cable, pendant or cantilever mounting hangers — ordered and priced separately; see pg. SW24.1. Specify end and intermediate hangers as needed. Cantilever/pendant supplied with recessed outlet box (suitable backing structure required). Adjustable interface plate (concealed under canopy) allows for leveling of arms.

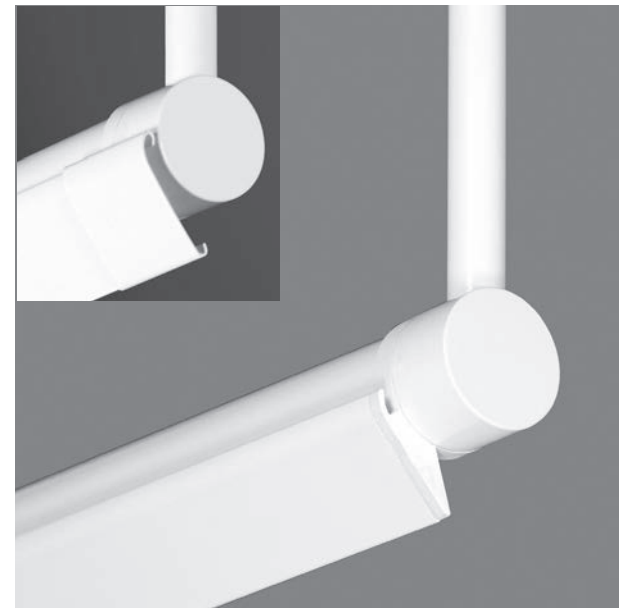
Fixture weight: 0.8 lb/ft (1.1 kg/m).

**Electrical:**

Units are furnished with 10 foot (3048mm) leads for connection to remote driver Class II output. Remote electronic HPF thermally protected Class II driver mounted in aluminum enclosure. For complete driver specifications, see website, reference document [MA-1303](#). Optional, compatible dimming controls (by others). See website for dimming compatibility and specifications.

**Standard:**

UL listed or CSA certified for damp location. 5 year warranty, maximum ambient temperature 45°C (113°F).



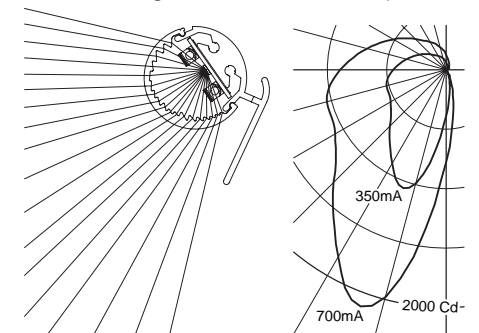
**Features**

- Inconspicuous low profile – lights entire wall evenly without emphasizing surface imperfections (unlike slot grazers)
- Built-in visor provides shielding of glare from below
- Adjustable and lockable aiming
- Small, elegant hub hangers with pendant stem, cable, or cantilever mounting



**Performance**

Precisely extruded acrylic lens produces an asymmetric distribution ideal for illuminating vertical surfaces evenly from top to bottom.



For LM79 and photometric reports, visit [thelightingquotient.com](http://thelightingquotient.com)



**elliptipar**   
...there is no equal

To form a Catalog Number

S | 1 | 1 | 2 | - R | | | - X | | | - | | | - | | | - | | |

1 2 3 4 5 6 7 8 9 10

Project: \_\_\_\_\_

Type: \_\_\_\_\_

**1 Source**

S = Solid state (LED)

**2 Style**

112 = Xtra small linear LED asymmetric, remote driver

**3 Length / Light Output / Power**

ORDER CODE	LENGTH	LUMENS	INPUT WATTS	NUMBER OF LEDS	DRIVE CURRENT
R02G	2FT	975	7	72	175mA
R02L	2FT	1911	13	72	350mA
R02M	2FT	3704	27	72	700mA
R03G	3FT	1462	10	108	175mA
R03L	3FT	2866	20	108	350mA
R03M	3FT	5555	40	108	700mA
R04G	4FT	1949	13	144	175mA
R04L	4FT	3821	27	144	350mA
R04M	4FT	7407	53	144	700mA
R05G	5FT	2437	17	180	175mA
R05L	5FT	4777	33	180	350mA
R05M	5FT	9259	67	180	700mA
R06G	6FT	2924	20	216	175mA
R06L	6FT	5732	40	216	350mA
R06M	6FT	11111	80	216	700mA

Based on 3500K/80+CRI. [Click here](#) for scaled performance table.

**4 Mounting**

X = For use with required cantilever, pendant stem, or cable hangers — ordered and priced separately; see at right

**5 Finish**

02 = Semigloss white  
 08 = Semigloss black  
 99 = Custom RAL or computer matched color to be specified, consult factory

**6 Voltage**

M = 120-277V Universal voltage input  
 K = 347V input

**7 Option** (See Accessories Section for specifications)

00 = No options  
 0B = Cross baffle, provides 25° lateral shielding  
 0M = For use in MRI medical facility. MRI filters required on output of each remote driver. Consult factory prior to specification.

**8 Destination Requirement**

0 = UL listed or CSA certified for U.S.  
 J = UL listed or CSA certified for Canada

**9 Color Temperature / CRI**

827 = 2700K, 80+ CRI      927 = 2700K, 90+ CRI  
 830 = 3000K, 80+ CRI      930 = 3000K, 90+ CRI  
 835 = 3500K, 80+ CRI      935 = 3500K, 90+ CRI  
 840 = 4000K, 80+ CRI      940 = 4000K, 90+ CRI

Note: Additional CCT and CRI options are available; consult factory.

**10 Dimming\*\***

00 = Non-dimming  
 TD = ERP Tri-Dim forward phase, reverse phase (120V) or 0-10V dimming (120-277V), 100-10% power on forward/reverse phase, 100%-1% on 0-10V, compatible controls by others  
 ZX = 0-10V analog dimming 120-277V input, dimming range 100%-5%, 0-10V controls by others  
 EL = eldoLED SOLOdrive 120-277V input, 0-10V analog dimming 100%-0.1% power (controls by others)  
 ED = eldoLED SOLOdrive 120-277V input, dimming range 100%-0.1%, DALI controls by others

\*\*Dimming range refers to % power input, % light output will vary.

Refer to Driver Information document [MA-1357](#)

Note: Number of drivers varies with length and drive current see

[MA-1447](#)

**Required Mounting Hangers (X Mount)**

Mounting hangers HMC, HMD, HMF, HMG, or HMP are required for the S112 — ordered and priced separately. See installation sheets on website. For individually mounted luminaires, order two end hangers for each housing. For a continuous row, order two end hangers. To determine the quantity of intermediate hangers, total the number of housings in the row and subtract one. Example: a row of 5 housings requires 2 end hangers and 4 intermediate hangers.

HMC Cantilever hanger with round canopy, intermediate

HMD Cantilever hanger with round canopy, end

HMF Pendant stem with round canopy, intermediate

HMG Pendant stem with round canopy, end

HMP Cable hanger with round canopy, feed, non-feed

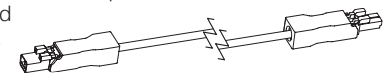
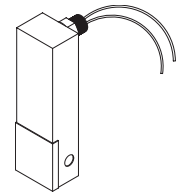
**Accessories**

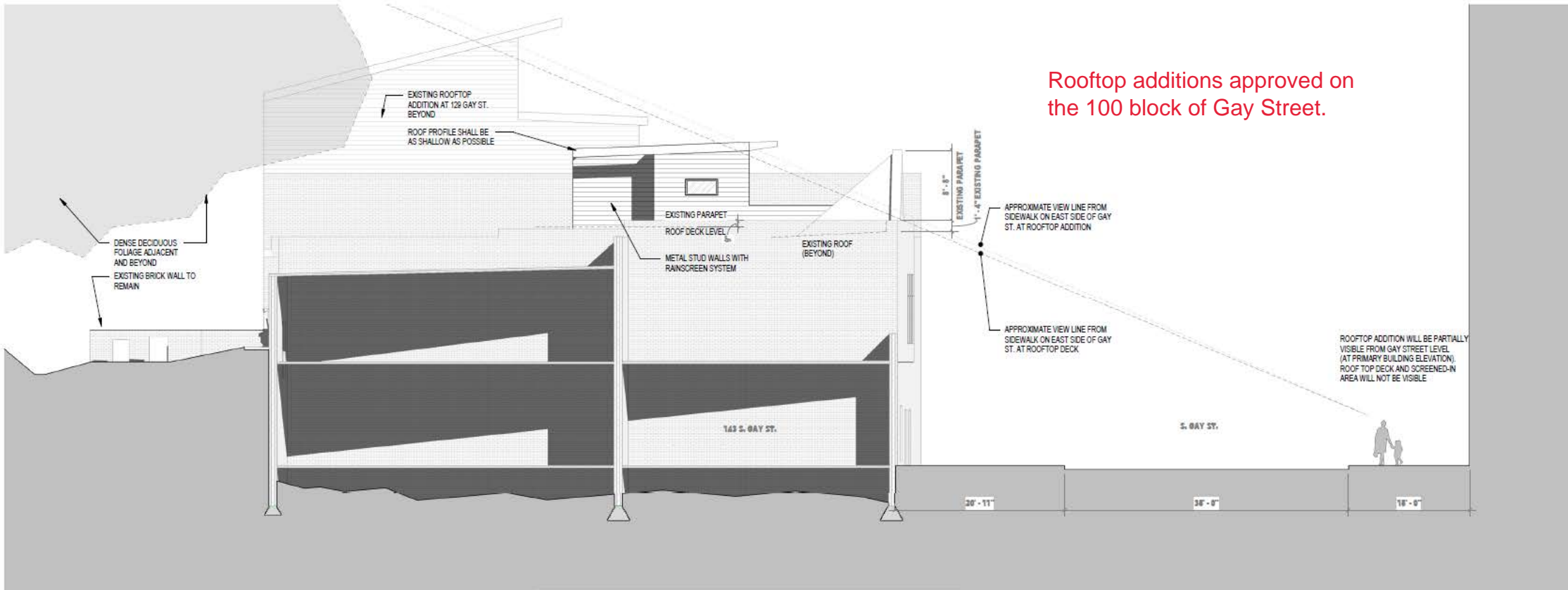
Order separately. See Accessories Section for specifications.

AMR02050 = Accessory Magnetic Resonance imaging filter. 2 conductor up to 5 amps, attenuation > 100dB (5MHz to 10GHz).

Note: one filter required per remote driver – consult factory for number of drivers required per luminaire.

AXC0899 = Accessory plug and socket quick connectors for use with #18/2 AWG solid or topcoat wire by others to extend remote driver distance.





Rooftop additions approved on the 100 block of Gay Street.

ROOFTOP ADDITION WILL BE PARTIALLY VISIBLE FROM GAY STREET LEVEL (AT PRIMARY BUILDING ELEVATION). ROOF TOP DECK AND SCREENED-IN AREA WILL NOT BE VISIBLE