



# REQUEST

DOWNTOWN DESIGN

**Level 1:**

- Signs     Alteration of an existing building/structure

**Level 2:**

- Addition to an existing building/structure

**Level 3:**

- Construction of new building/structure     Site design, parking, plazas, landscape

*See required Downtown Design attachment for more details.*

Brief description of work: Addition & renovation to existing building - please see attached letter

HISTORIC ZONING

**Level 1:**

- Signs     Routine repair of siding, windows, roof, or other features, in-kind; Installation of gutters, storm windows/doors

**Level 2:**

- Major repair, removal, or replacement of architectural elements or materials     Additions and accessory structures

**Level 3:**

- Construction of a new primary building

**Level 4:**

- Relocation of a contributing structure     Demolition of a contributing structure

*See required Historic Zoning attachment for more details.*

Brief description of work: \_\_\_\_\_

INFILL HOUSING

**Level 1:**

- Driveways, parking pads, access point, garages or similar facilities     Subdivisions

**Level 2:**

- Additions visible from the primary street     Changes to porches visible from the primary street

**Level 3:**

- New primary structure  
 Site built     Modular     Multi-Sectional

*See required Infill Housing attachment for more details.*

Brief description of work: \_\_\_\_\_

STAFF USE ONLY

**ATTACHMENTS**

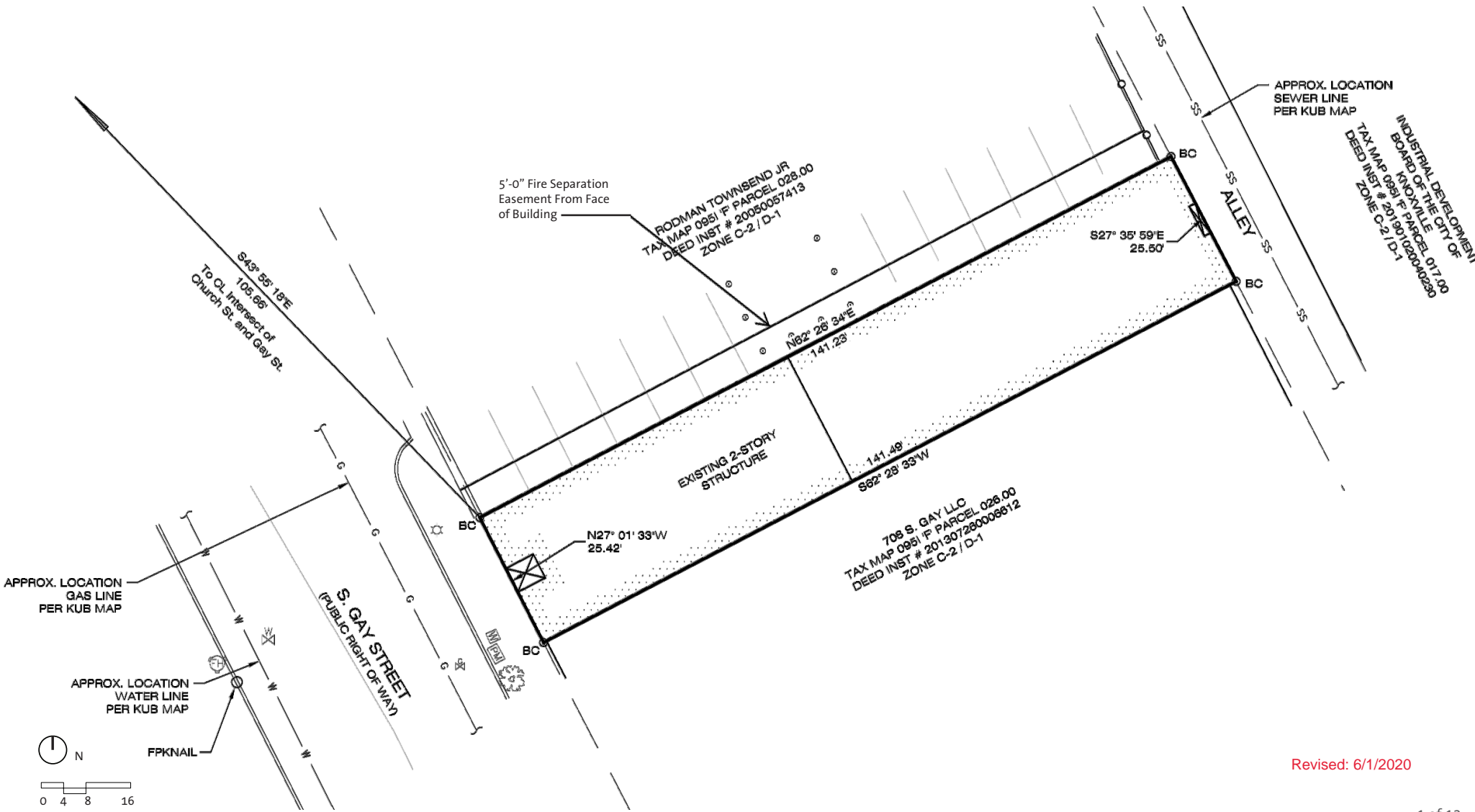
- Downtown Design Checklist  
 Historic Zoning Design Checklist  
 Infill Housing Design Checklist

**ADDITIONAL REQUIREMENTS**

- Property Owners / Option Holders

**Level 1:** \$50 • **Level 2:** \$100 • **Level 3:** \$250 • **Level 4:** \$500

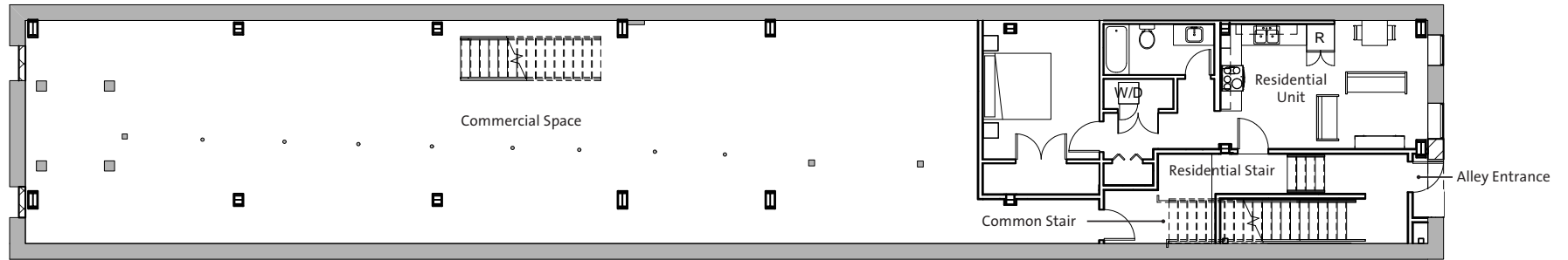
<b>FEE 1:</b>		<b>TOTAL:</b>
0510	Level 2	
<b>FEE 2:</b>		
<b>FEE 3:</b>		\$100



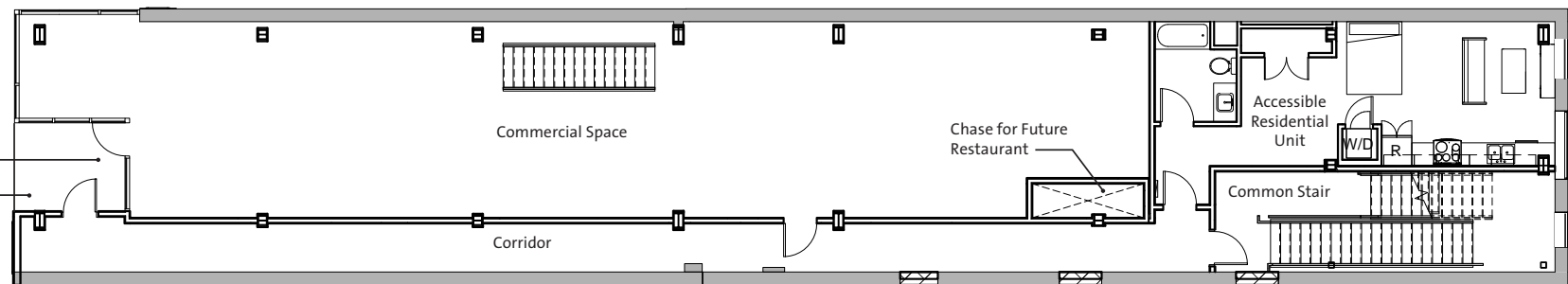
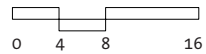
Revised: 6/1/2020

706 S Gay Street  
 Design Review Board Submission  
 Site Plan

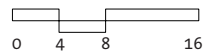




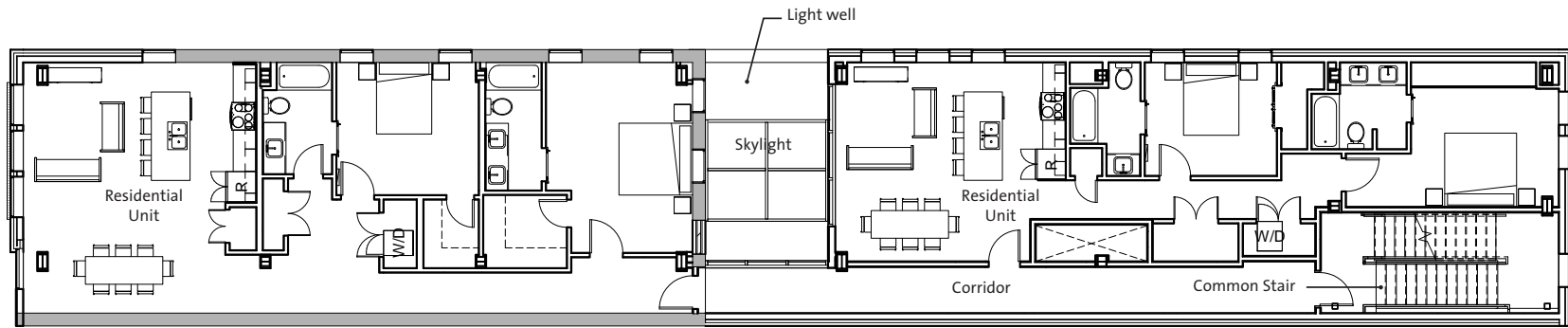
Basement Level Floor Plan



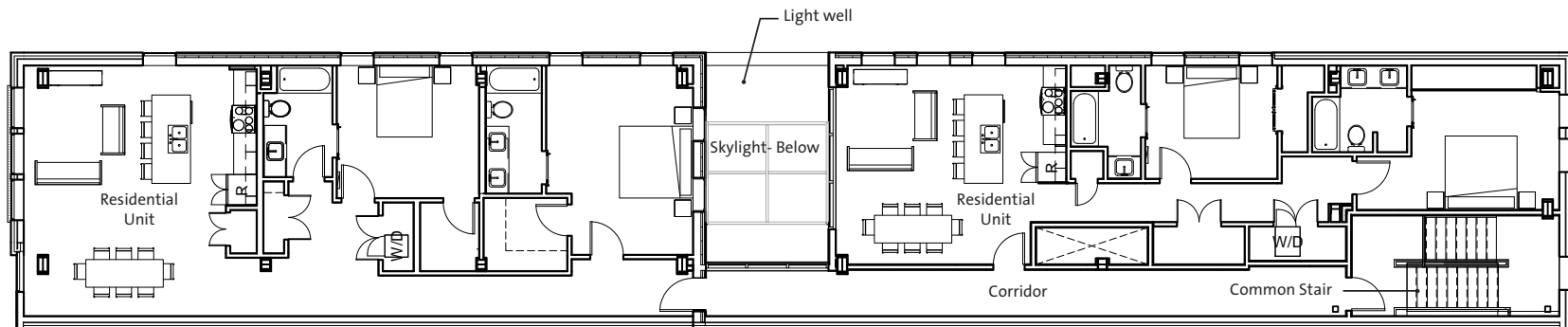
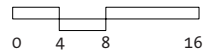
Main Level Floor Plan



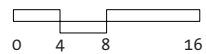
Revised: 6/1/2020



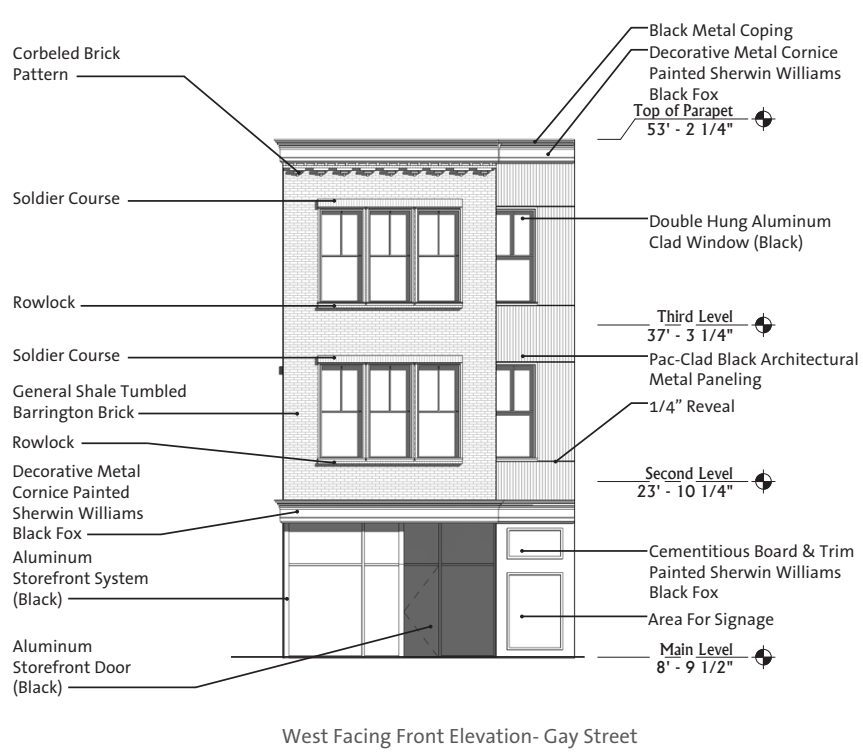
Second Level Floor Plan



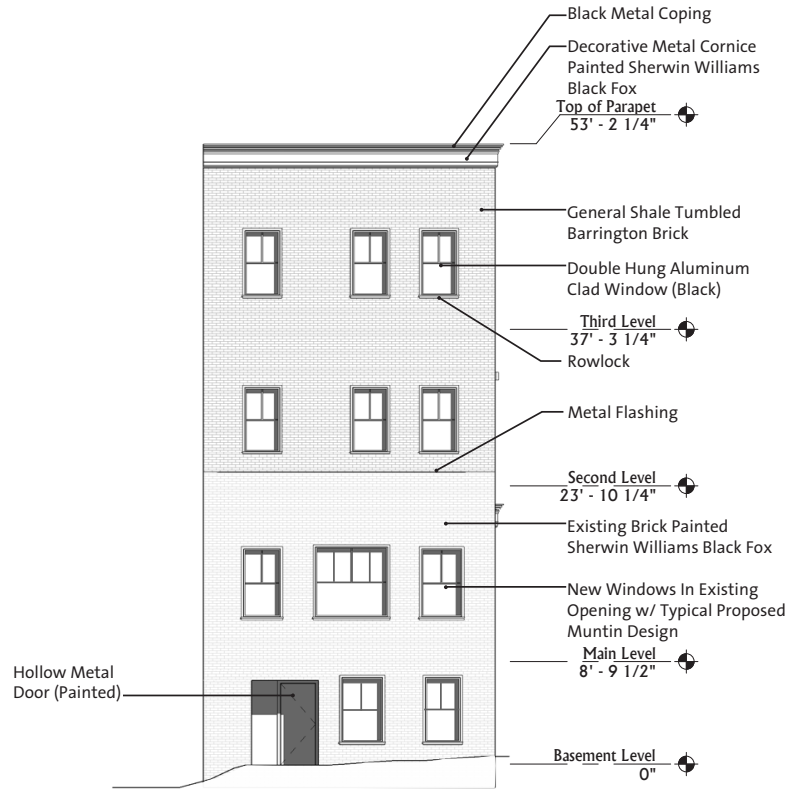
Third Level Floor Plan



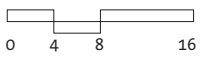
Revised: 6/1/2020



West Facing Front Elevation- Gay Street

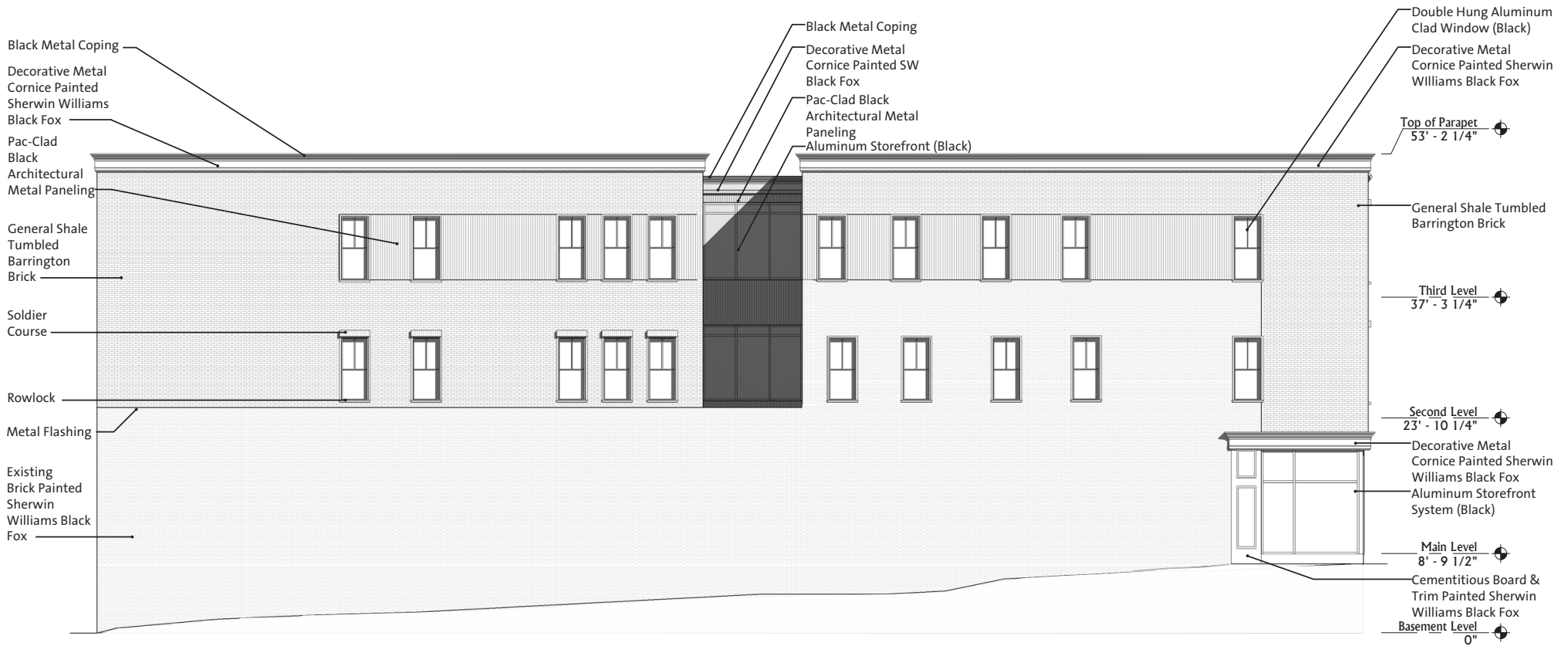


East Facing Rear Elevation- Alley

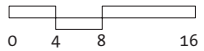


Revised: 6/1/2020





North Facing Side Elevation- Parking Lot



Revised: 6/1/2020



Revised: 6/1/2020

6 of 12

706 S Gay Street  
Design Review Board Submission  
Existing Building

2575 Willow Point Way Suite 105 • Knoxville, TN 37931 • v: 865.769.8075 • f: 865.769.8076 • [www.R2Rstudio.com](http://www.R2Rstudio.com)

**R2R**  
studio, llc





Revised: 6/1/2020

7 of 12

706 S Gay Street  
Design Review Board Submission  
Proposed Design

2575 Willow Point Way Suite 105 • Knoxville, TN 37931 • v: 865.769.8075 • f: 865.769.8076 • [www.R2Rstudio.com](http://www.R2Rstudio.com)

**R2R**  
studio, llc



Existing Building



Proposed Design

Revised: 6/1/2020

8 of 12

706 S Gay Street  
Design Review Board Submission  
Perspective- Gay Street

2575 Willow Point Way Suite 105 • Knoxville, TN 37931 • v: 865.769.8075 • f: 865.769.8076 • [www.R2Rstudio.com](http://www.R2Rstudio.com)

**R2R**  
studio, llc



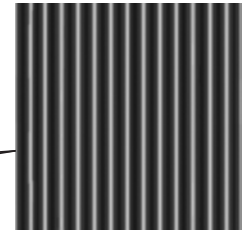
Decorative Cornice  
Painted Sherwin  
Williams Black Fox



Existing Brick New Paint  
Color: Sherwin Williams  
Black Fox



Existing Painted Brick



Pac-Clad Black  
Architectural Metal  
Paneling



General Shale Tumbled  
Barrington Brick



Black Aluminum  
Storefront

Revised: 6/1/2020





Existing Building



\*Shaded Region Represents Adjacent Building

Proposed Design

Revised: 6/1/2020





Decorative Cornice  
Painted Sherwin  
Williams Black Fox



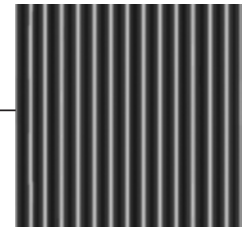
Brick Corbel Inspiration



Black Aluminum  
Storefront



General Shale Tumbled  
Barrington Brick



Pac-Clad Black  
Architectural Metal  
Paneling

Revised: 6/1/2020

11 of 12



Existing Building



\*Shaded Region Represents Adjacent Building

Proposed Design

Revised: 6/1/2020

12 of 12

706 S Gay Street  
Design Review Board Submission  
Perspective- Gay Street

2575 Willow Point Way Suite 105 • Knoxville, TN 37931 • v: 865.769.8075 • f: 865.769.8076 • [www.R2Rstudio.com](http://www.R2Rstudio.com)

**R2R**  
studio, llc