

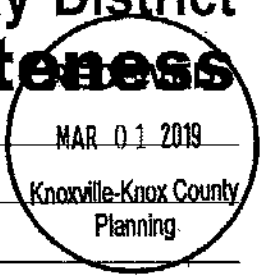
Downtown Knoxville Design Overlay District Certificate of Appropriateness

Name of Applicant: Church & Henley Partners, LLC

Owner Contractor Architect Engineer Other

Date Filed: 03/01/19 Application accepted by: Mike Reynolds

Fee Amount: \$250 Review Date: 3/20/19 File Number: 3-C-19-DT



PRE-APPLICATION CONFERENCE Date Completed: _____

PROPERTY INFORMATION

Building or Project Name: Church & Henley

Street Address: 624 W. Church Ave

Parcel Identification Number(s): 094MC01501

PROJECT ARCHITECT/ENGINEER

PLEASE PRINT
 Name: Neil T Gray

Company: JDavis

Address: 501 S. Wilmington Street

City: Raleigh State: NC Zip: 27601

Telephone: 919-835-1500

Fax: 919-835-1510

E-mail: neilg@jdavisarchitects.com

PROPERTY OWNER

PLEASE PRINT
 Name: Scott Black

Company: Church & Henley Partners, LLC

Address: 381 Mallory Station Road, Suite 204

City: Franklin State: IN Zip: 37067

Telephone: 615-394-3054

Fax: _____

E-mail: black@bristoldevelopment.com

PROJECT CONTRACTOR

PLEASE PRINT
 Name: Damian Starr

Company: The Wieland-Davco Corporation

Address: 4162 English Oak Dr

City: Lansing State: MI Zip: 48911

Telephone: 517-204-4106

Fax: _____

E-mail: dstarr@wielandbuilds.com

ACCOMPANYING MATERIALS
 Please see the reverse side of this form for a list of information required as part of this application.

FOR OFFICE USE ONLY

PROJECT INFORMATION

LEVEL 1: \$50
 Minor Alteration of an Existing Building/Structure
 Sign

LEVEL 2: \$100
 Major Alteration of an Existing Building/Structure
 Addition to an Existing Building/Structure

LEVEL 3: \$250
 Construction of New Building/Structure

PROJECT CONTACT
 All application-related correspondence should be directed to:

PLEASE PRINT
 Name: Shawn Clemons

Company: JDavis

Address: 510 S. Wilmington Street

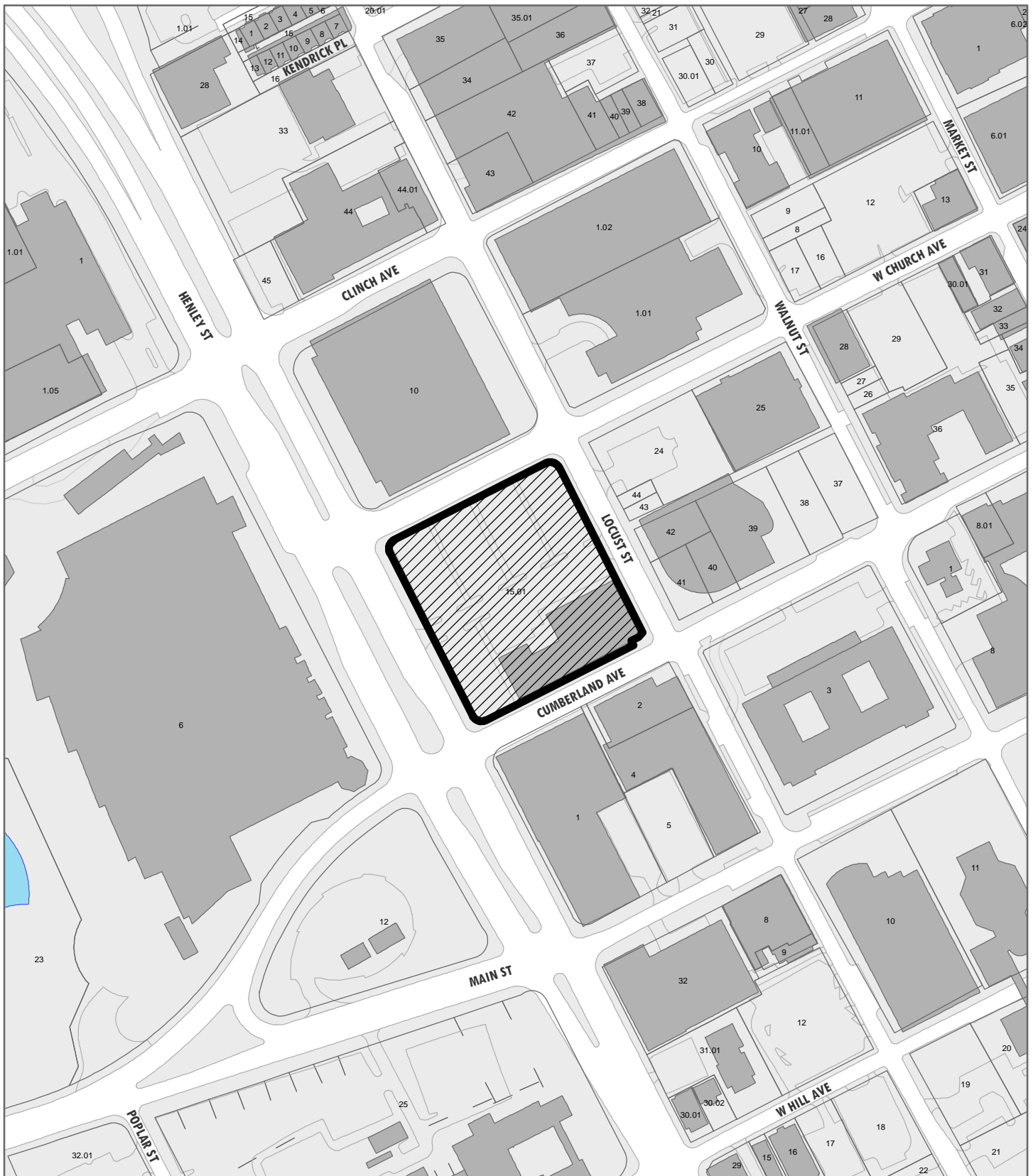
City: Raleigh State: NC Zip: 27601

Telephone: 919-835-1500

Fax: 919-835-1510

E-mail: shawnc@jdavisarchitects.com

NOTE: Payment is due at time of application. Please make check payable to Knoxville Knox County Metropolitan Planning Commission.



3-C-19-DT

APPLICATION FOR CERTIFICATE OF APPROPRIATENESS

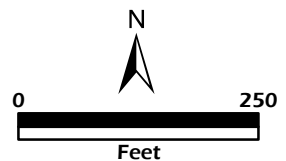
Petitioner: Church & Henley Partners, LLC, Scott Black

**DOWNTOWN
DESIGN
REVIEW
BOARD**



624 W Church Ave
Level 3: Construction of new building/structure

Original Print Date: 3/13/2019
Revised:
Metropolitan Planning Commission * City / County Building * Knoxville, TN 37902





Supreme Court Site
Knoxville, TN

JDAVIS >

DIA

ARCHITECTS + INTERIORS + PLANNING

RALEIGH | PHILADELPHIA | www.jdavisarchitects.com

PREPARED FOR:

bristol
development group

DOVER
DEVELOPMENT

03/20/2019









JDAVIS

DIA
 ARCHITECTS • INTERIORS • PLANNING

DOVER
 DEVELOPMENT

bristol
 development group

© 2018 ARCHITECTS EXPRESS SERVICES IS COMMON. L.W. COPYRIGHT AND OTHER PROPERTY RIGHTS IN THESE PLANS, THEIR PLANS, THEIR PLANS ARE NOT TO BE REPRODUCED, CHANGED OR COPIED IN ANY FORM OR MANNER WHATSOEVER, NOR ARE THEY TO BE ASSIGNED TO ANY THIRD PARTY WITHOUT THE EXPRESSED WRITTEN PERMISSION AND CONSENT OF DIA ARCHITECTS, PLLC.



TENNESSEAN HOTEL



UT CONFERENCE CENTER



KNOXVILLE CONVENTION CENTER



HILTON

LIBRARY

FEDERAL BUILDING

POST OFFICE

Supreme Court Site - Bristol Development Group, Dover Development
SITE CONTEXT



JDAVIS



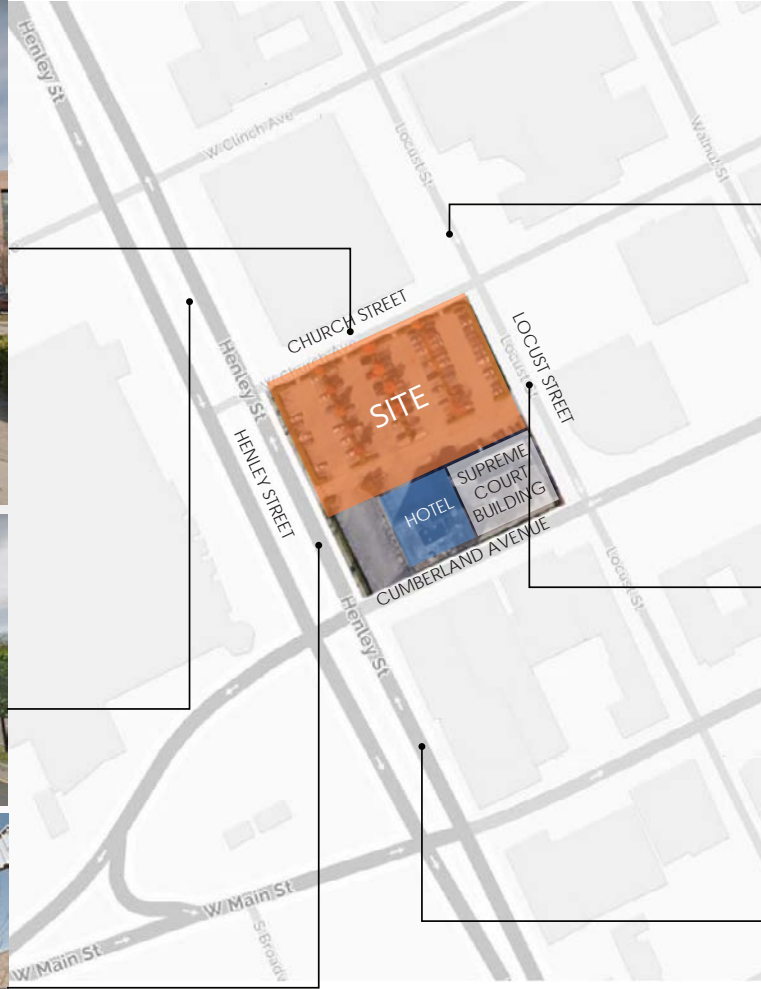
DIA
 ARCHITECTS + INTERIORS + PLANNING



DOVER DEVELOPMENT



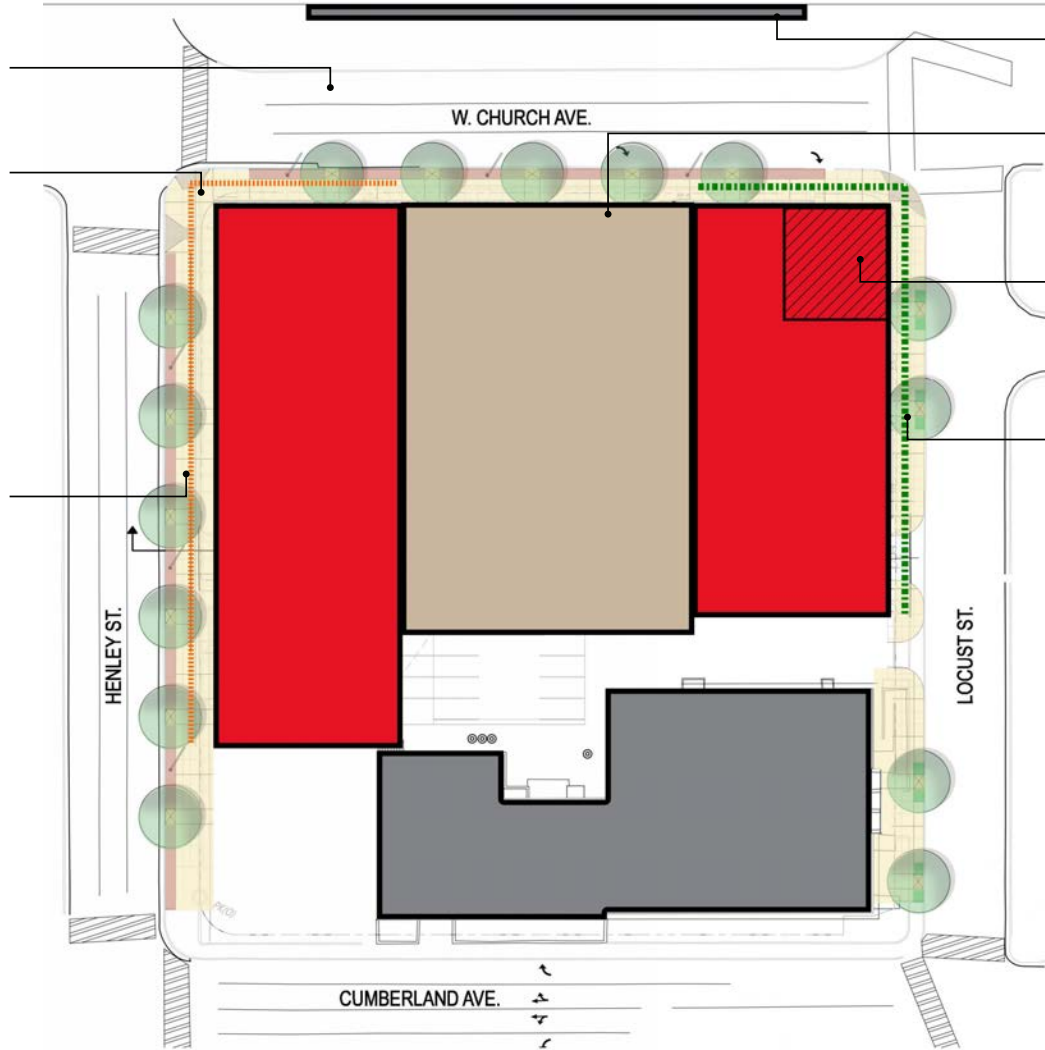
bristol development group



CHURCH STREET IS TOO STEEP TO BE SUITABLE FOR PEDESTRIAN ENTRANCES

WRAP ACTIVE FACADE AROUND CORNER ALL THE WAY TO SERVICE ENTRANCE AT BOTH CORNERS

ACTIVATE HENLEY STREET SIDEWALK WITH COMMERCIAL CHARACTER



UT CONFERENCE CENTER FRONTS CHURCH STREET WITH BLANK BRICK WALL

LOCATE SERVICE DRIVES ON CHURCH STREET FACING CONFERENCE CENTER

RESIDENTIAL UNIT DESIGNED TO BE FLEXIBLE FOR FUTURE RETAIL USE

ACTIVATE LOCUST STREET SIDEWALK WITH RESIDENTIAL CHARACTER





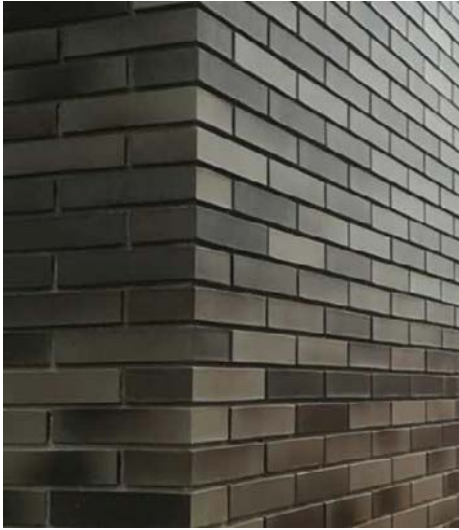


Supreme Court Site - Bristol Development Group, Dover Development
NORTH ELEVATION (CHURCH STREET)









BLACK BRICK



SEGMENTAL OVERHEAD ALUMINUM DOOR WITH GLAZED PANELS WITH TRANSLUCENT FILM APPLIED TO GLASS



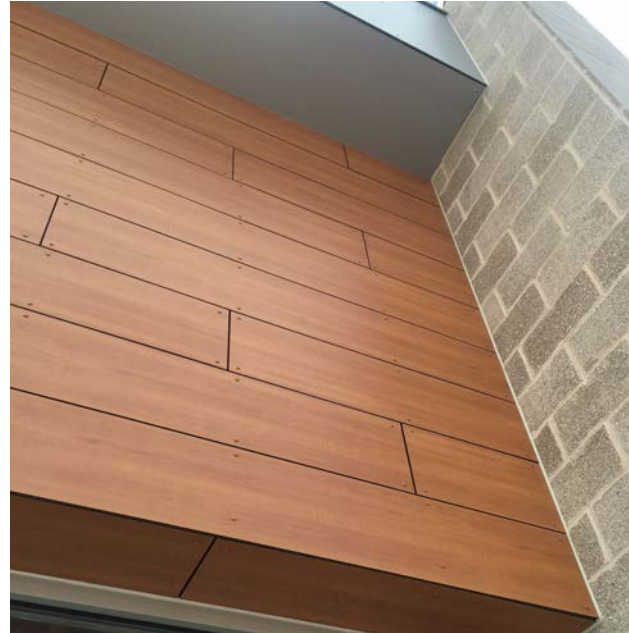
CEMENTITIOUS PANEL REVEAL SYSTEM



HARD COAT STUCCO



EXTRUDED ALUMINUM WINDOWS WITH FLUOROPOLYMER FINISH (BRONZE) MIX OF SINGLE HUNG AND FIXED



PHENOLIC PANEL RAINSCREEN WITH WOOD LOOK



ALUMINUM STOREFRONT WITH FLUOROPOLYMER FINISH (BRONZE)



CONCEPTUAL EXTERIOR LIGHTING

Supreme Court Site - Bristol Development Group, Dover Development
CONCEPTUAL EXTERIOR MATERIALS

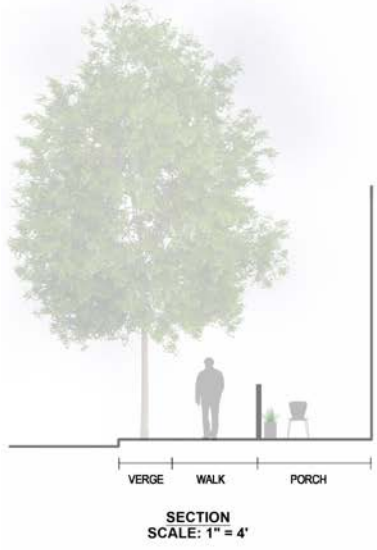
J DAVIS

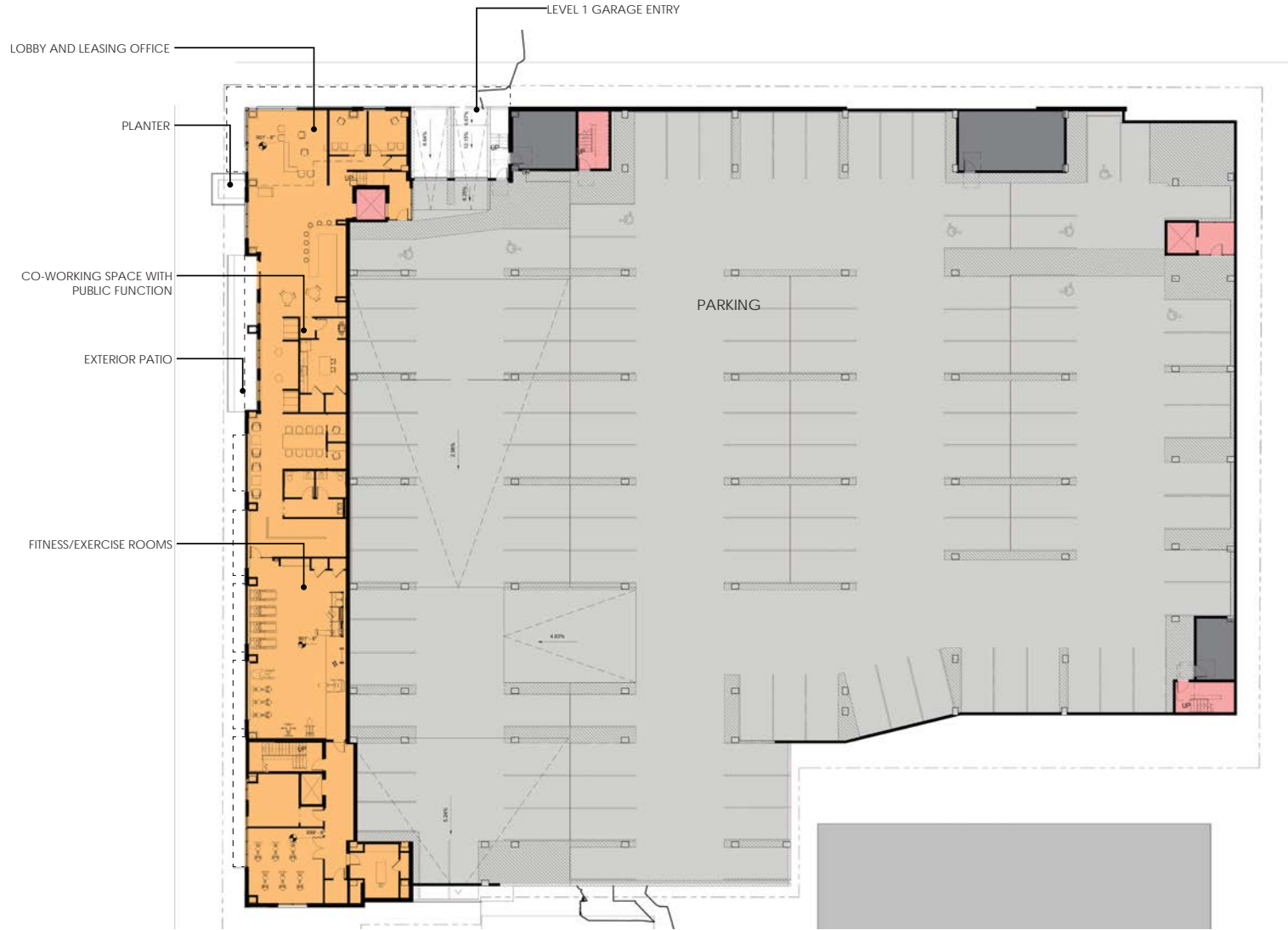
DIA ARCHITECTS + INTERIORS + PLANNING

DOVER DEVELOPMENT

bristol development group

© 2018 J.D. ARCHITECTS. EXHIBITS BELONG TO COMMON LAW. COPYRIGHT AND OTHER PROPERTY RIGHTS IN THESE PLANS, THEIR PLANS ARE NOT TO BE REPRODUCED, CHANGED OR COPIED IN ANY FORM OR MANNER WHATSOEVER, NOR ARE THEY TO BE ASSIGNED TO ANY THIRD PARTY WITHOUT FIRST OBTAINING THE EXPRESSED WRITTEN PERMISSION AND CONSENT OF J.D.A. ARCHITECTS, P.A.C.







STREET AND SIDEWALK SLOPE AT GREATER THAN 6%

DOUBLE HEIGHT SPACE AT LOBBY

CYCLING CENTER AND MAKER SPACE WITH OVERHEAD DOOR TO ENGAGE WITH SIDEWALK

LEVEL 2 GARAGE ENTRY
ART DISPLAY BOXES

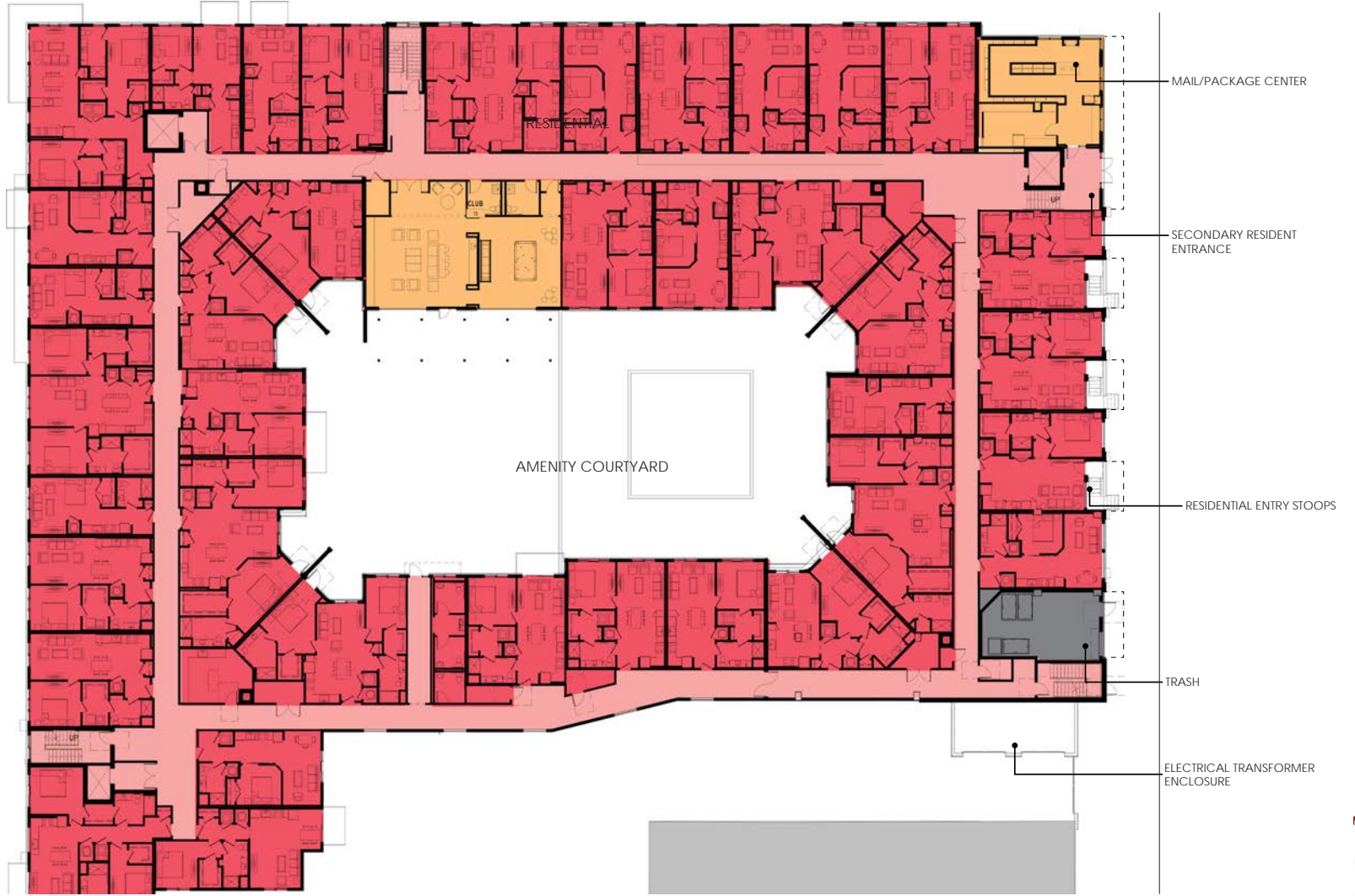
UTILITY

OPEN TO ABOVE

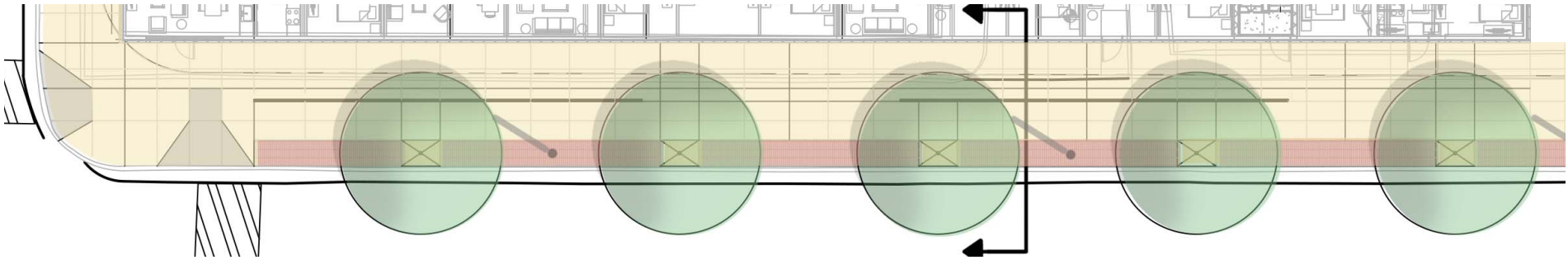
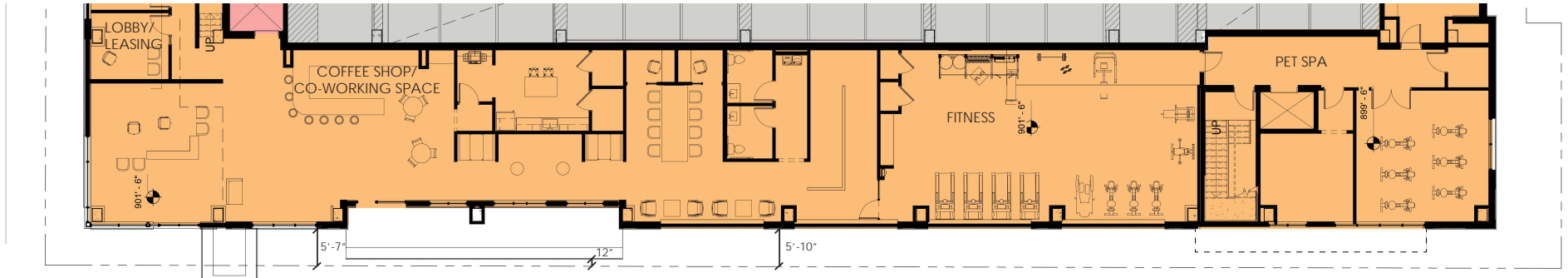
PARKING

RESIDENTIAL

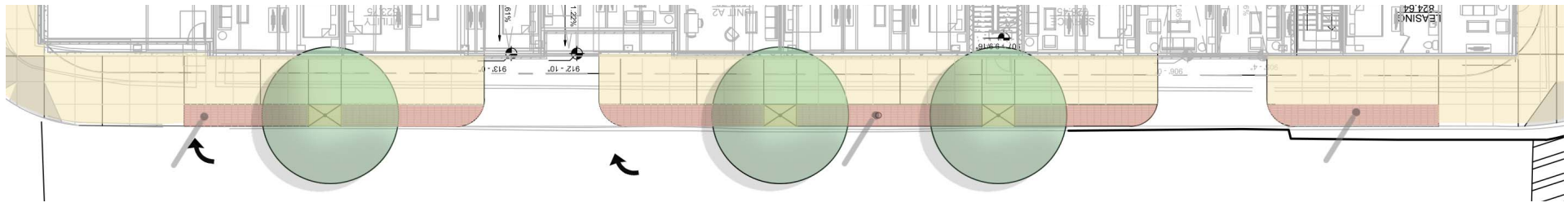
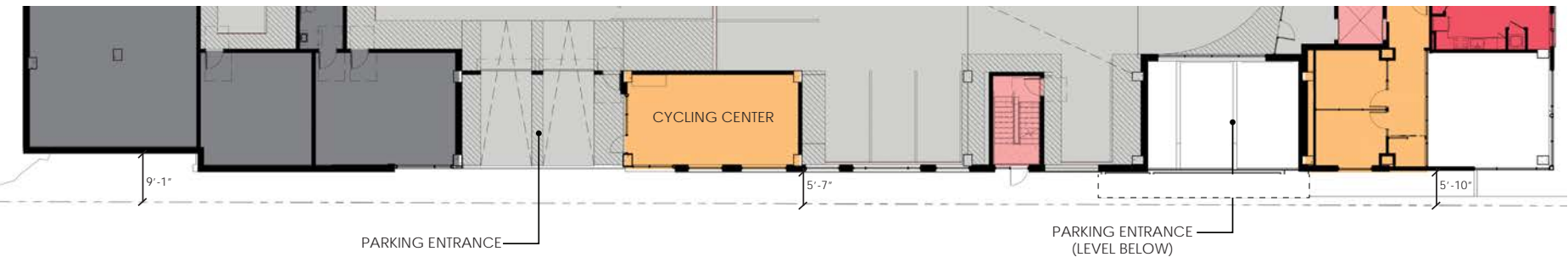
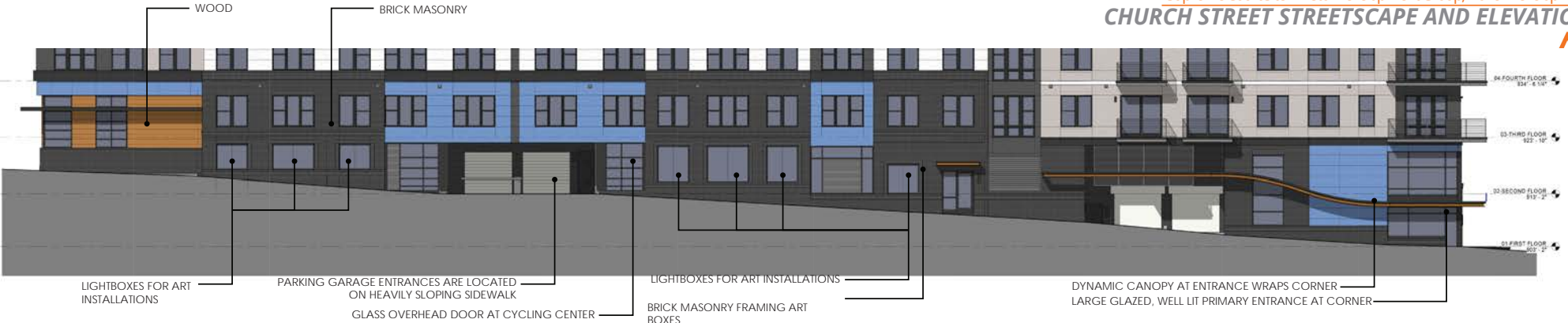
RESIDENT PET SPA





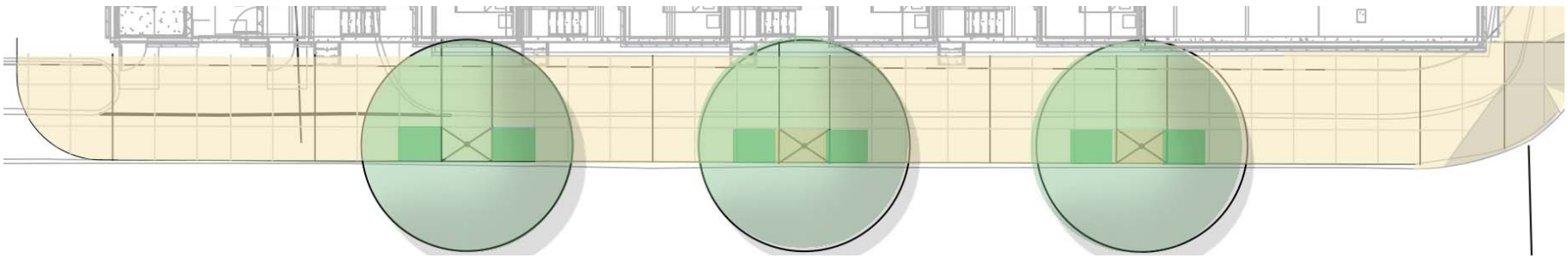
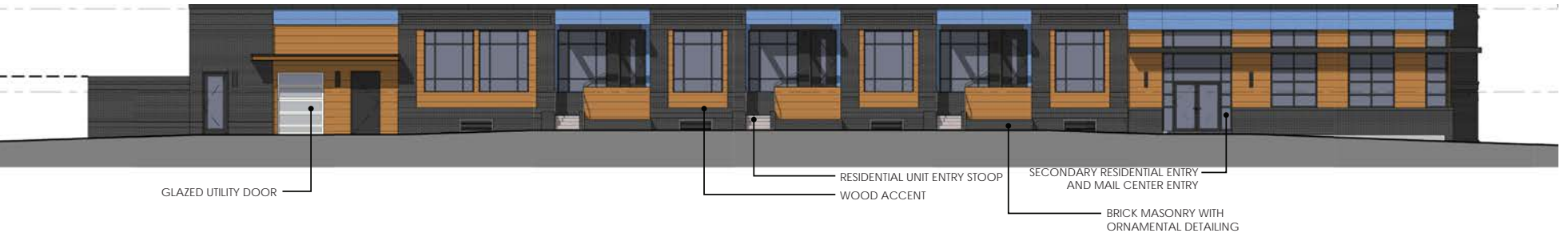


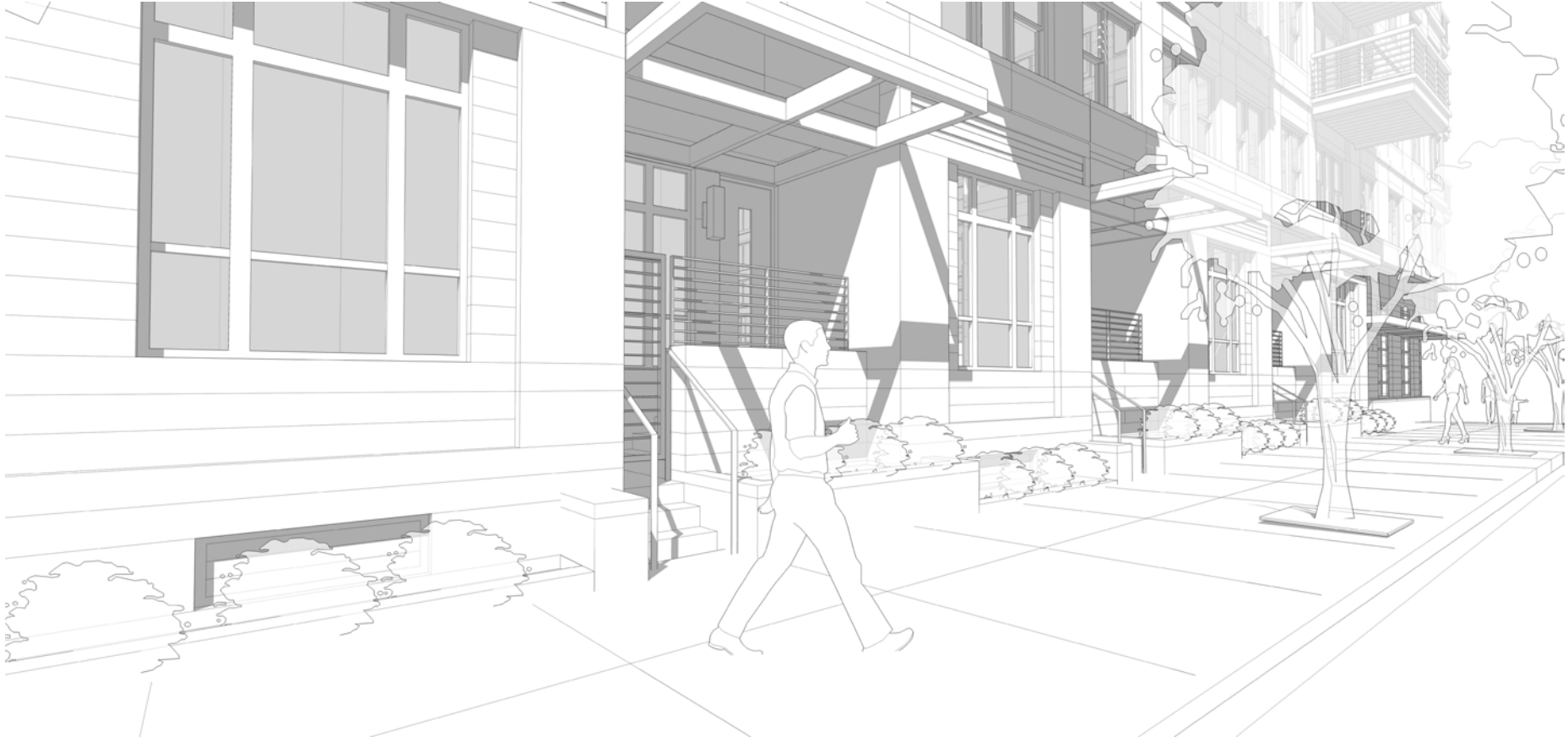
Supreme Court Site - Bristol Development Group, Dover Development
CHURCH STREET STREETScape AND ELEVATION



DIA ARCHITECTS + INTERIORS + PLANNING
 DOVER DEVELOPMENT
 bristol development group
 PAGE 21

Supreme Court Site - Bristol Development Group, Dover Development
LOCUST STREET STREETScape AND ELEVATION





Supreme Court Site - Bristol Development Group, Dover Development
RESIDENTIAL ENTRY AT CORNER OF LOCUST AND CHURCH



J DAVIS >

DIA
ARCHITECTS • INTERIORS • PLANNING

DOVER
DEVELOPMENT

bristol
development group

Supreme Court Site - Bristol Development Group, Dover Development
LEASING OFFICE ENTRY AT CORNER OF HENLEY AND CHURHC



Supreme Court Site - Bristol Development Group, Dover Development
PERSPECTIVE FROM CHURCH AND CUMBERLAND





CONTACT

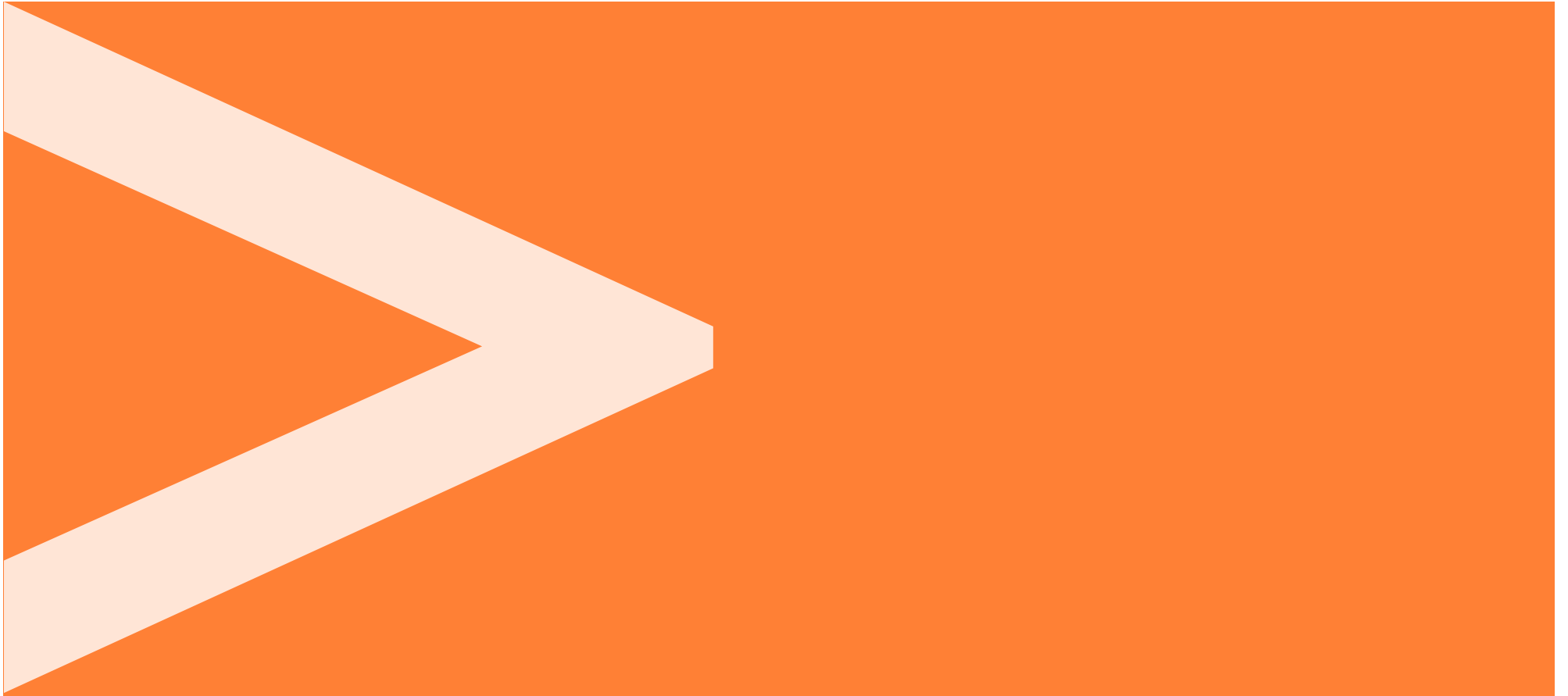
Neil Gray, AIA, LEED® AP
Principal
t: (855) 752-5045
neilg@jdavisarchitects.com

JDAVIS

1518 Walnut Street, Suite 1308 | Philadelphia, PA 19102 | (215) 545-0121
510 S. Wilmington Street | Raleigh, NC 27601 | (919) 835-1500

www.jdavisarchitects.com

[facebook](#) | [twitter](#) | [linked-in](#) | [google+](#) | [flickr](#) | [you tube](#)



Supreme Court Site
Knoxville, TN

JDAVIS >
DIA
ARCHITECTS + INTERIORS + PLANNING

RALEIGH | PHILADELPHIA | www.jdavisarchitects.com

PREPARED FOR:

bristol
development group

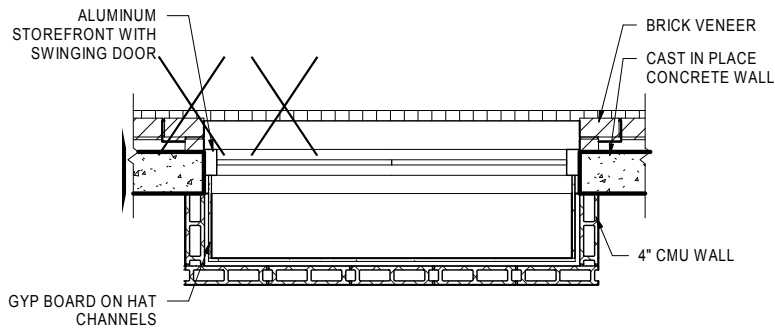
DOVER
DEVELOPMENT

03/20/2019

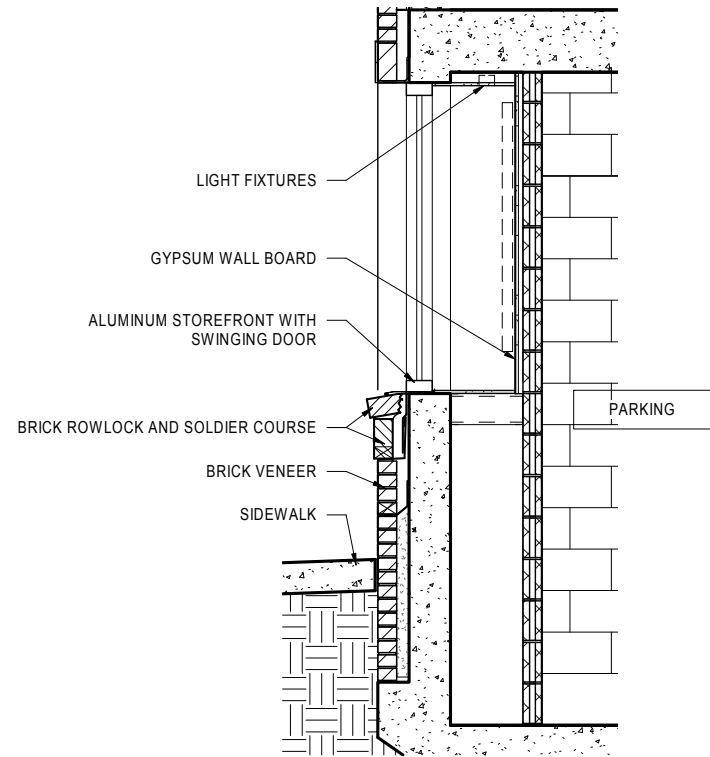




LIGHT BOX ELEVATIONS



TYPICAL LIGHT BOX PLAN DETAIL



TYPICAL LIGHT BOX SECTION

© 2015 JDAVIS ARCHITECTS EXPRESSLY RESERVES ITS COMMON LAW COPYRIGHT AND OTHER PROPERTY RIGHTS IN THESE PLANS. THESE PLANS ARE NOT TO BE REPRODUCED, CHANGED OR COPIED IN ANY FORM OR MANNER WHATSOEVER, NOR ARE THEY TO BE ASSIGNED TO ANY THIRD PARTY WITHOUT FIRST OBTAINING THE EXPRESSED WRITTEN PERMISSION AND CONSENT OF JDAVIS ARCHITECTS, PLLC.



510 South Wilmington St. | Raleigh, NC 27601 | tel 919.835.1500
 1518 Walnut St., Suite 1308 | Philadelphia, PA 19102 | tel 215.545.0121

CHURCH & HENLEY
 LIGHTBOX DETAILS

DDR01

03/13/19