

Downtown Knoxville Design Overlay District Certificate of Appropriateness

Name of Applicant: Forrest Kirkpatrick

Owner Contractor Architect Engineer Other _____

Date Filed: 6/28/19 Application accepted by: Lindsay Crouxett

Fee Amount: \$100.00 Review Date: 7/17/19 File Number: 7-B-19-DT

PRE-APPLICATION CONFERENCE

Date Completed: _____

PROPERTY INFORMATION

Building or Project Name: Vine Furniture, Change of
 Occupancy

Street Address: 122 Summit Hill Drive

Parcel Identification Number(s):
094EH009

PROJECT ARCHITECT/ENGINEER

PLEASE PRINT
 Name: Forrest Kirkpatrick, Architect

Company: Fork Design

Address: 524 Williams Street

City: Knoxville State: TN Zip: 37917

Telephone: (865) 603-4297

Fax: _____

E-mail: forrest@forkdesign.us

PROPERTY OWNER

PLEASE PRINT
 Name: Kelly Shinlever

Company: Hoffner GC Realty Estate Inc.

Address: 124 Summit Hill Drive

City: Knoxville State: TN Zip: 37902

Telephone: (865) 637-9661

Fax: _____

E-mail: kelly@vinefurniture.com

PROJECT CONTRACTOR

PLEASE PRINT
 Name: _____

Company: _____

Address: _____

City: _____ State: _____ Zip: _____

Telephone: _____

Fax: _____

E-mail: _____

ACCOMPANYING MATERIALS

Please see the reverse side of this form for a list of information required as part of this application.

FOR OFFICE USE ONLY

PROJECT INFORMATION

LEVEL 1: \$50
 Minor Alteration of an Existing Building/Structure
 Sign

LEVEL 2: \$100
 Major Alteration of an Existing Building/Structure
 Addition to an Existing Building/Structure

LEVEL 3: \$250
 Construction of New Building/Structure

PROJECT CONTACT

All application-related correspondence should be directed to:

PLEASE PRINT
 Name: Forrest Kirkpatrick, Architect

Company: Fork Design

Address: 524 Williams Street

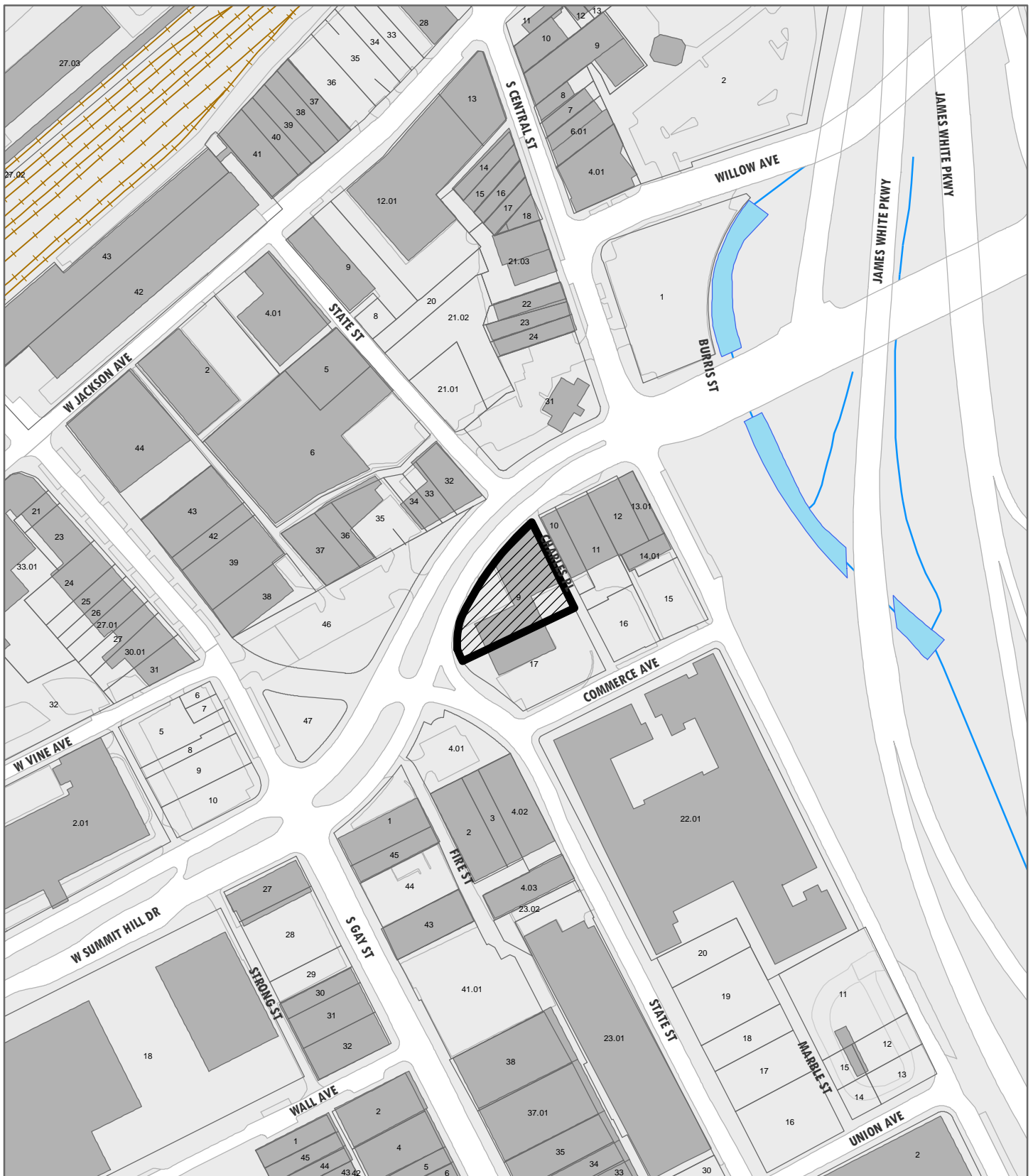
City: Knoxville State: TN Zip: 37917

Telephone: (865) 603-4297

Fax: _____

E-mail: forrest@forkdesign.us

paid 6/28/19



7-B-19-DT

APPLICATION FOR CERTIFICATE OF APPROPRIATENESS

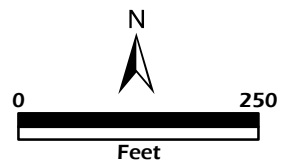
Petitioner: Forrest Kirkpatrick, Fork Design

**DOWNTOWN
DESIGN
REVIEW
BOARD**



122 W. Summit Hill Dr.
Level 2: Major alteration of an existing building/structure

Original Print Date: 7/8/2019
Revised:
Knoxville/Knox County Planning · Downtown Design Review Board



date : 2019.06.28
project : Vine Furniture, Change of Occupancy
project address : 122 Summit Hill Drive, Knoxville TN 37902
parcel number : 094EH009

Project Description:

The project goal is to convert a portion of the building from 2 floors of mercantile space to 1 floor of commercial space and 1 floor of residential apartments. The new commercial space will consist of 2 commercial units — 1 with 2,000 sf leasable space and 1 with 1,550 sf leasable space — with entries on Summit Hill Drive. The new residential space will consist of 4 residential units — 2 one-bedroom units and 2 two-bedroom units — with an entry court accessed through an existing parking lot on Charles Place / Commerce Avenue.

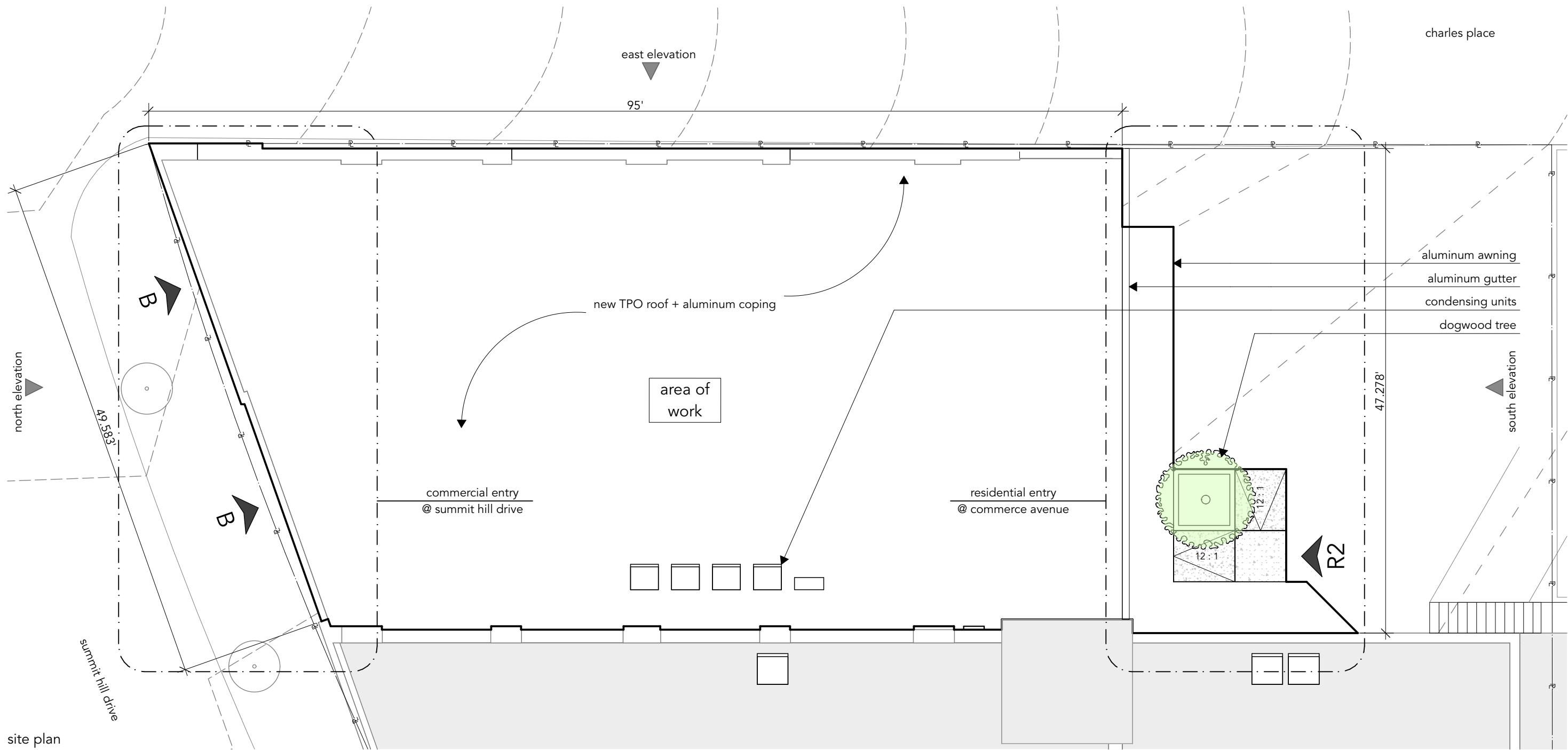
Improvements and alterations to the existing facades include the following:

- Summit Hill Drive Facade:
 - The existing brick and glass facade was built in the 1970's when the front of the historic structure was removed by KCDC to allow for Summit Hill Drive and includes a storefront and an interior fire stair.
 - The improvements proposed include:
 - Removal of the interior fire stair and addition of a two-story storefront opening to provide entry to the ground-floor commercial space and windows to bedrooms in one of the apartments above.
 - Removal of the existing storefront, to be altered to allow a larger entry court and storefront at the ground-floor commercial space, and replacement of the storefront on the second story for windows in one of the apartments above.
 - One planter and landscaping.
- Charles Place Facade:
 - The existing brick facade was built primarily in the 19th century with the addition of a rear extension and front interior fire stair in the 1970's. On the first floor there are 3 window openings and 1 egress door from the interior fire stair; on the second floor there are 5 window openings.
 - The improvements proposed include:
 - Replacement of 2 of the 3 windows in the first story with the third opening being extended to grade for an egress door.
 - Replacement of the 5 windows in the second story with the addition of 1 window to match.
 - Cleaning and painting of 19th century brick.
 - Security lighting.
- Commerce Avenue Facade:
 - The existing brick facade was built in the 1970's as part of the Summit Hill Drive project.
 - The improvements proposed include:
 - 3 new doors and 1 new window.
 - Addition of a concrete entry court and loading dock.
 - Addition of an aluminum deck and awning.
 - Electrical service to the building.
 - Security lighting.
 - One tree and planter.



property plan
 scale: 1" = 40'





site plan
scale: 1" = 10'



Vine Furniture // Change of Occupancy // 122 Summit Hill Drive Knoxville TN 37902

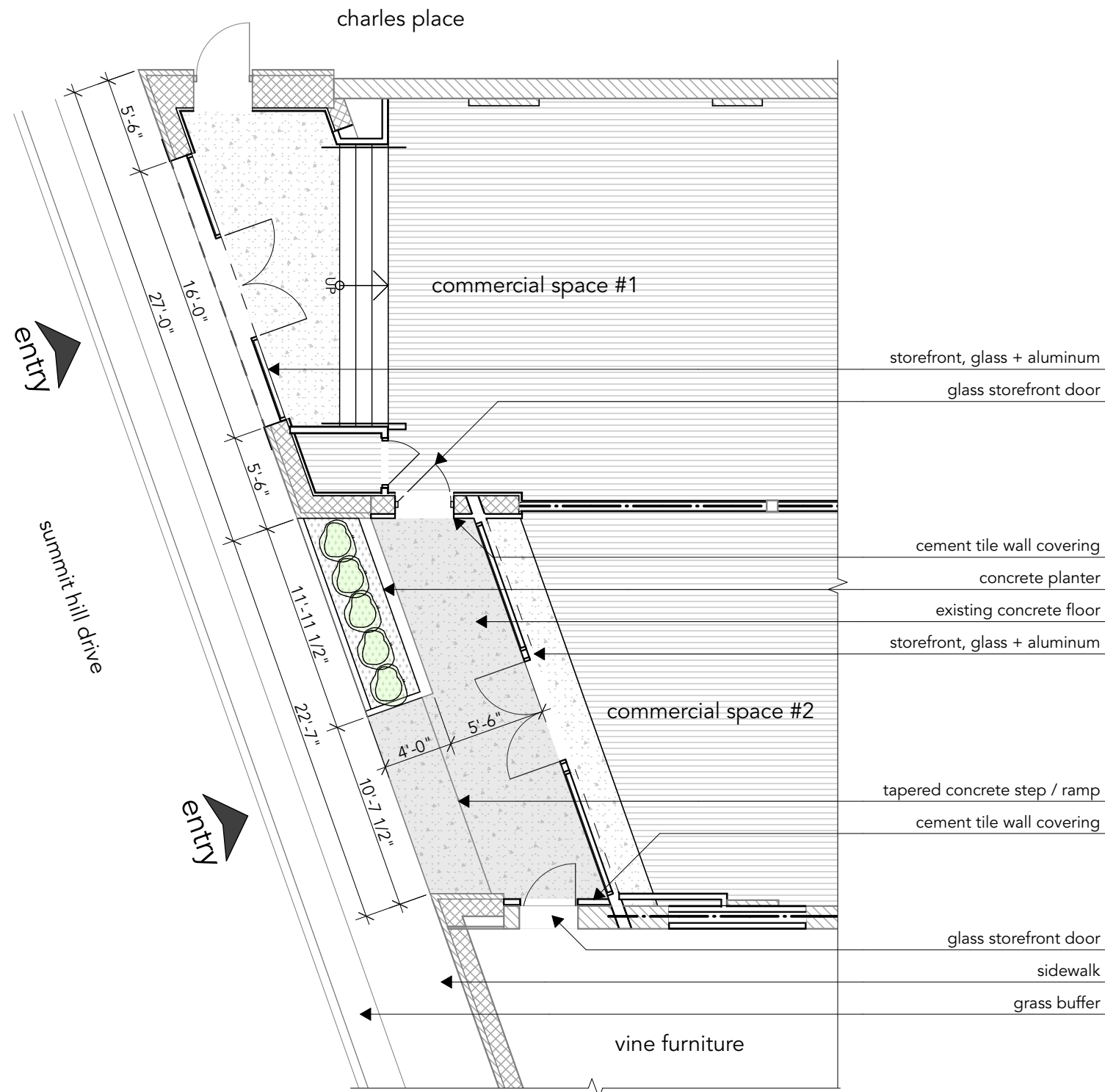
ddrb.2
site plan

forrest@forkdesign.us

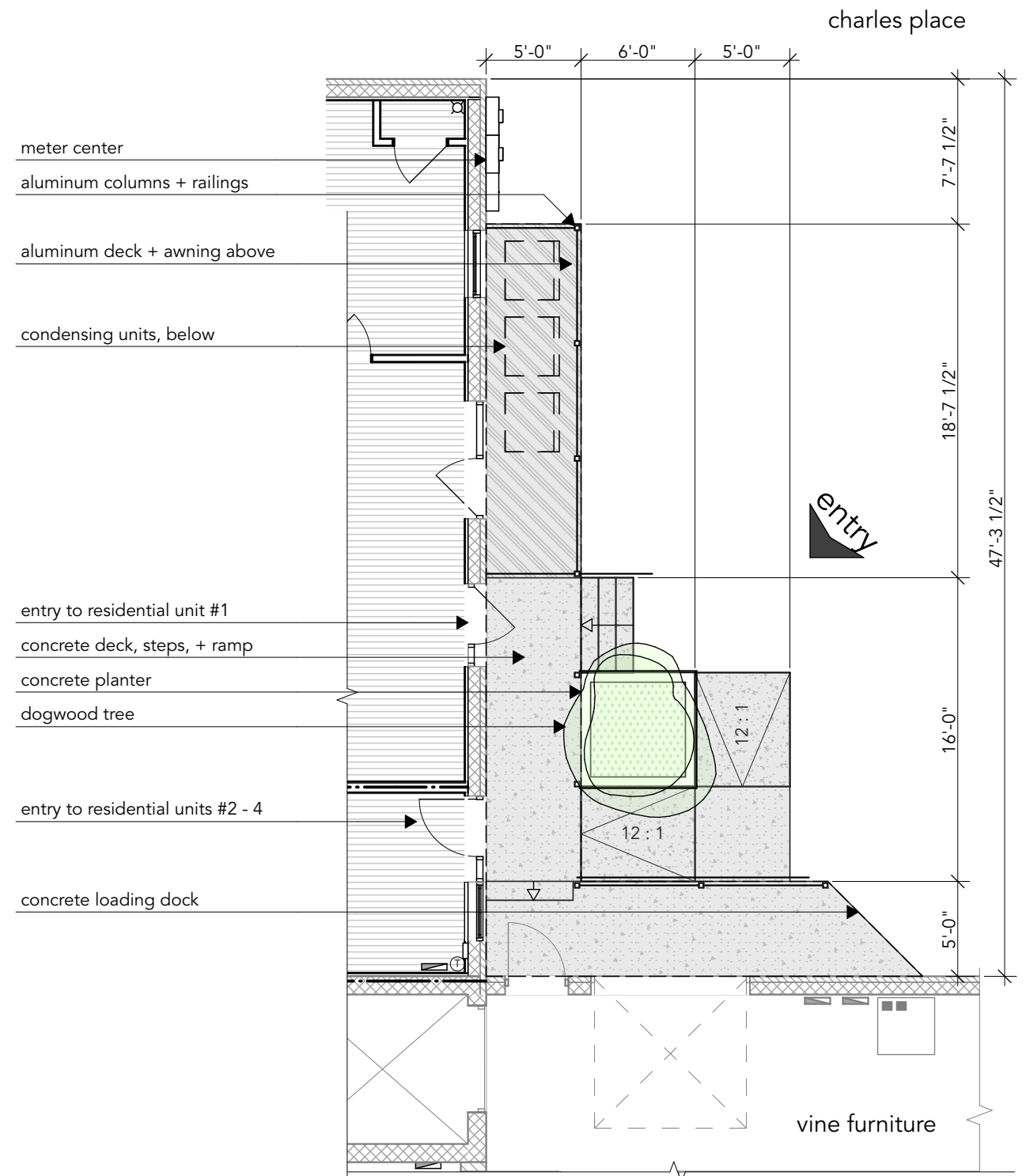
project number : 1805

2019.07.05

Revised: 7/5/2019



commercial entry @ summit hill drive
 scale: 1/8" = 1'-0"



residential entry @ commerce avenue
 scale: 1/8" = 1'-0"



forrest@forkdesign.us

Vine Furniture // Change of Occupancy // 122 Summit Hill Drive Knoxville TN 37902

project number : 1805

ddrb.3
 entry plans

2019.07.05

Revised: 7/5/2019



notes:

- 1. aluminum coping
- 2. ceramic coated steel panels
- 3. existing brick
 - a. clean
 - b. clean + paint
- 4. aluminum trim, powder coated
- 5. concrete planter
- 6. aluminum storefront
- 7. spandrel glass
- 8. future signage
- 9. aluminum window
 - a. existing opening
- 10. aluminum door
 - a. existing opening
- 11. aluminum gutter + downspout
- 12. aluminum canopy
- 13. entry
- 14. loading dock
- 15. condensing units
- 16. security lights



current view from summit hill drive

- remove stucco + signage
- replace storefront
- new door, each side
- clean existing brick



current view at charles place from commerce avenue

- clean + paint existing brick
- remove gutter
- reuse window openings
- clean existing brick

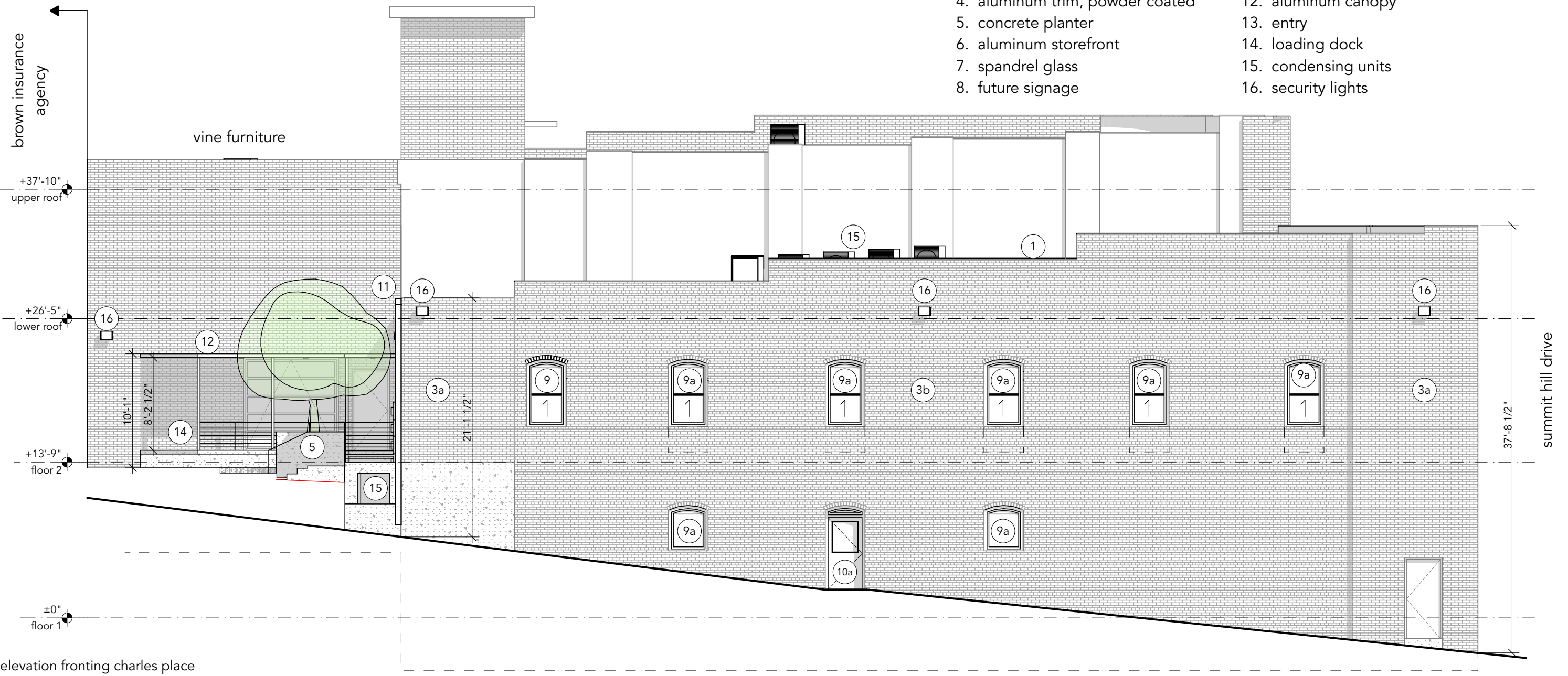


current view at charles place from summit hill drive

- clean existing brick
- remove gutter
- clean + paint existing brick
- reuse window openings

notes:

- | | |
|---------------------------------|---------------------------------|
| 1. aluminum coping | 9. aluminum window |
| 2. ceramic coated steel panels | a. existing opening |
| 3. existing brick | 10. aluminum door |
| a. clean | a. existing opening |
| b. clean + paint | 11. aluminum gutter + downspout |
| 4. aluminum trim, powder coated | 12. aluminum canopy |
| 5. concrete planter | 13. entry |
| 6. aluminum storefront | 14. loading dock |
| 7. spandrel glass | 15. condensing units |
| 8. future signage | 16. security lights |

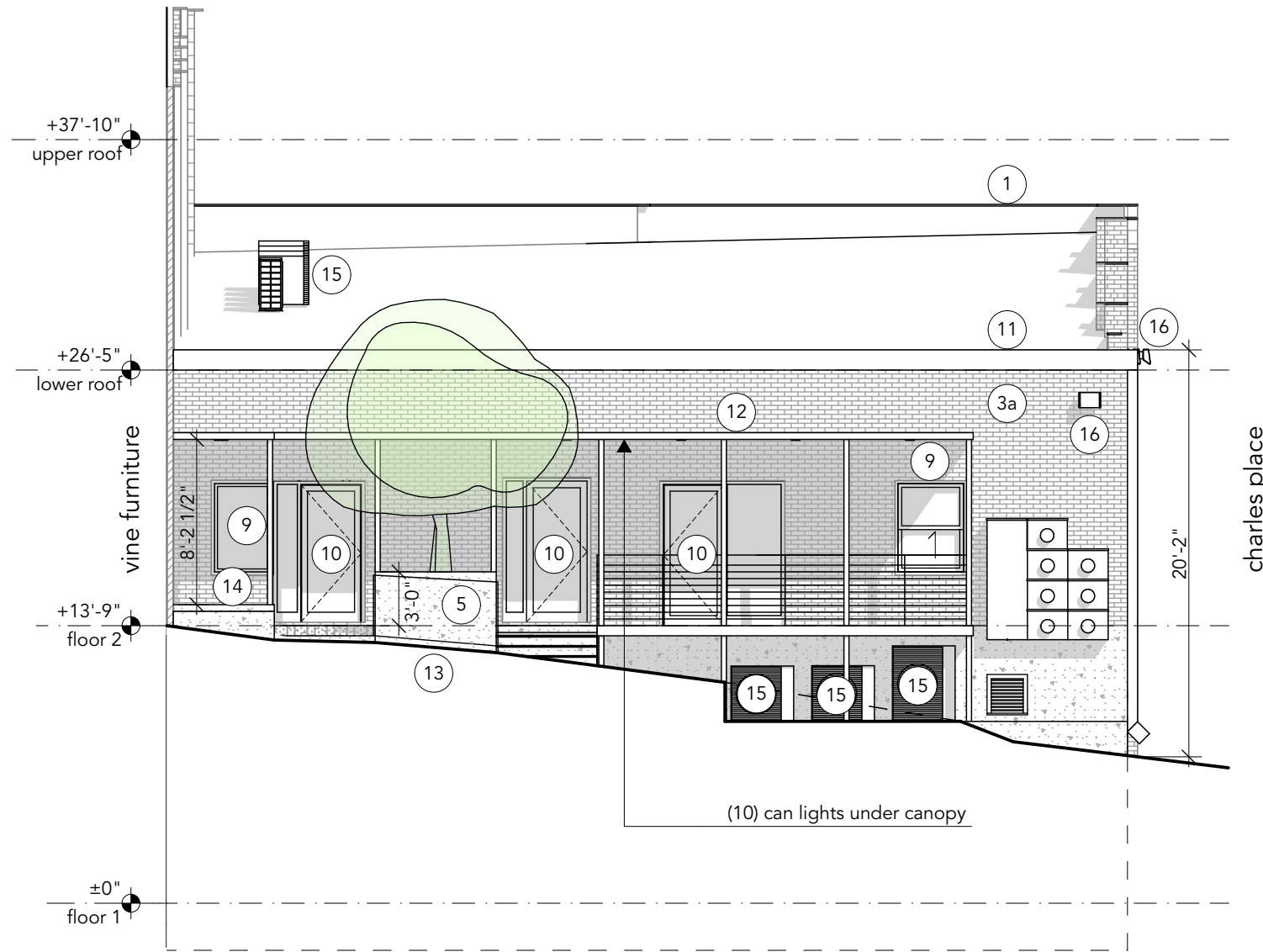


elevation fronting charles place
scale: 1:106.67



Vine Furniture // Change of Occupancy // 122 Summit Hill Drive Knoxville TN 37902

ddrb.5b
east elevation



elevation fronting commerce avenue
 scale: 1/8" = 1'-0"

notes:

- | | |
|---------------------------------|---------------------------------|
| 1. aluminum coping | 9. aluminum window |
| 2. ceramic coated steel panels | a. existing opening |
| 3. existing brick | 10. aluminum door |
| a. clean | a. existing opening |
| b. clean + paint | 11. aluminum gutter + downspout |
| 4. aluminum trim, powder coated | 12. aluminum canopy |
| 5. concrete planter | 13. entry |
| 6. aluminum storefront | 14. loading dock |
| 7. spandrel glass | 15. condensing units |
| 8. future signage | 16. security lights |



current view from
 charles place

loading dock



D-Series Size 1 LED Wall Luminaire



Catalog Number

Notes

Type

Hit the Tab key or mouse over the page to see all interactive elements.

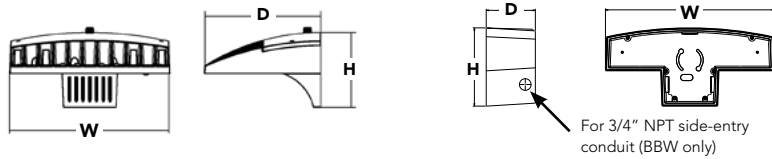
d#series

Specifications Luminaire

Width:	13-3/4" (34.9 cm)	Weight:	12 lbs (5.4 kg)
Depth:	10" (25.4 cm)		
Height:	6-3/8" (16.2 cm)		

Back Box (BBW, ELCW)

Width:	13-3/4" (34.9 cm)	BBW Weight:	5 lbs (2.3 kg)
Depth:	4" (10.2 cm)	ELCW Weight:	10 lbs (4.5 kg)
Height:	6-3/8" (16.2 cm)		



Introduction

The D-Series Wall luminaire is a stylish, fully integrated LED solution for building-mount applications. It features a sleek, modern design and is carefully engineered to provide long-lasting, energy-efficient lighting with a variety of optical and control options for customized performance.

With an expected service life of over 20 years of nighttime use and up to 74% in energy savings over comparable 250W metal halide luminaires, the D-Series Wall is a reliable, low-maintenance lighting solution that produces sites that are exceptionally illuminated.

Ordering Information

EXAMPLE: DSXW1 LED 20C 1000 40K T3M MVOLT DBBTD

Series	LEDs	Drive Current	Color temperature	Distribution	Voltage	Mounting	Control Options
DSXW1 LED	10C 10 LEDs (one engine) 20C 20 LEDs (two engines) ¹	350 350 mA 530 530 mA 700 700 mA 1000 1000 mA (1 A) ¹	30K 3000 K 40K 4000 K 50K 5000 K AMBPC Amber phosphor converted	T2S Type II Short T2M Type II Medium T3S Type III Short T3M Type III Medium T4M Type IV Medium TFTM Forward Throw Medium ASYDF Asymmetric diffuse	MVOLT ² 120 ³ 208 ³ 240 ³ 277 ³ 347 ^{3,4} 480 ^{3,4}	Shipped included (blank) Surface mounting bracket BBW Surface-mounted back box (for conduit entry) ⁵	Shipped installed PE Photoelectric cell, button type ⁶ DMG 0-10v dimming wires pulled outside fixture (for use with an external control, ordered separately) PIR 180° motion/ambient light sensor, <15' mtg ht ^{1,7} PIRH 180° motion/ambient light sensor, 15-30' mtg ht ^{1,7} PIR1FC3V Motion/ambient sensor, 8-15' mounting height, ambient sensor enabled at 1fc ^{1,7} PIRH1FC3V Motion/ambient sensor, 15-30' mounting height, ambient sensor enabled at 1fc ^{1,7} ELCW Emergency battery backup (includes external component enclosure), CA Title 20 Noncompliant ^{8,9}

Other Options	Finish (required)
Shipped installed SF Single fuse (120, 277 or 347V) ^{3,10} DF Double fuse (208, 240 or 480V) ^{3,10} HS House-side shield ¹¹ SPD Separate surge protection ¹²	DDBXD Dark bronze DBLXD Black DNAXD Natural aluminum DWHXD White DSSXD Sandstone DDBTXD Textured dark bronze DBLBXD Textured black DNATXD Textured natural aluminum DWHGXD Textured white DSSTXD Textured sandstone
Shipped separately ¹¹ BSW Bird-deterrent spikes WG Wire guard VG Vandal guard DDL Diffused drop lens	

Accessories

Ordered and shipped separately.

DSXWHS U	House-side shield (one per light engine)
DSXWBSW U	Bird-deterrent spikes
DSXW1WG U	Wire guard accessory
DSXW1VG U	Vandal guard accessory

NOTES

- 20C 1000 is not available with PIR, PIRH, PIR1FC3V or PIRH1FC3V.
- MVOLT driver operates on any line voltage from 120-277V (50/60 Hz).
- Single fuse (SF) requires 120, 277 or 347 voltage option. Double fuse (DF) requires 208, 240 or 480 voltage option.
- Only available with 20C, 700mA or 1000mA. Not available with PIR or PIRH.
- Back box ships installed on fixture. Cannot be field installed. Cannot be ordered as an accessory.
- Photocontrol (PE) requires 120, 208, 240, 277 or 347 voltage option. Not available with motion/ambient light sensors (PIR or PIRH).
- Reference Motion Sensor table on page 3.
- Cold weather (-20C) rated. Not compatible with conduit entry applications. Not available with BBW mounting option. Not available with fusing. Not available with 347 or 480 voltage options. Emergency components located in back box housing. Emergency mode IES files located on product page at www.lithonia.com
- Not available with SPD.
- Not available with ELCW.
- Also available as a separate accessory; see Accessories information.
- Not available with ELCW.





Catalog Number	C
Notes	
Type	

Contractor Select™

FMML 13 FMML 7

Versi Lite™ LED Flush Mount



Available in 7" and 13" round, the LED Versi Lite Flush Mount offers an energy-efficient lighting solution for an array of indoor and outdoor residential and light commercial spaces. With a 50,000 hour maintenance-free life, the Versi Lite delivers reliability along with bright, high quality illumination. Ideal for use in closets, foyers, hallways, bedrooms, offices, utility work areas, stairways, and many other rooms in the house.

FEATURES:

- Available in 2 color temperatures; 3000K and 4000K
- Dimmable to 10% on most standard triac dimmers
- Wet location option



Catalog Number	UPC	Description	Replaces up to	Lumens	Input Watts	CCT	CRI	Voltage	Pallet qty.
FMML 13 830	888791432961	13" Versi Lite	2-75W Incandescent	1,900	28W	3000K	80	120V	120
FMML 13 840	888791432954	13" Versi Lite	2-75W Incandescent	2,000	28W	4000K	80	120V	120
FMML 7 830 M6	820476182860	7" Versi Lite	60W Incandescent	642	10W	3000K	80	120V	540
FMML 7 830 WL M6	820476780080	7" Versi Lite*	60W Incandescent	642	10W	3000K	80	120V	540
FMML 7 840 M6	753573647355	7" Versi Lite	60W Incandescent	642	10W	4000K	80	120V	540
FMML 7 840 WL M6	820476881145	7" Versi Lite*	60W Incandescent	642	10W	4000K	80	120V	540

More configurations are available. [Click here](#) or visit www.acuitybrands.com and search for FMML 13 & FMML 7

NOTES
*Wet Location.



Specifications

INTENDED USE:

Provides general illumination in commercial and residential applications. Ideal for use in closets, foyers, hallways, corridors, bedrooms, offices, utility work areas, outdoor covered areas, stairways and much more.

CONSTRUCTION:

This contemporary shaped fixture features a matte white acrylic diffuser on the round versions, a polycarbonate diffuser on the square versions, and a robust aluminum housing. Wet location models are equipped with protective gasketing.

OPTICS:

Produces the following lumens at 50,000 hours life (WH finish):
3000 K: 642 lumens (7")/1898 lumens (13")
4000 K: 660 lumens (7")/1985 lumens (13")

ELECTRICAL:

Fixture operates at 120 volts, 60 Hz. 7" Round standard input = 9.3 watts, 70 lumens per watt. 13" Round standard input = 28 watts, 71 lumens per watt. 7". Works with most standard incandescent dimmers

LISTINGS:

All sizes are CSA certified for sale in the USA and Canada. Also certified for Damp Location. For wet Location, the WL OPTION must be added to model number. ENERGY STAR® certified. Round Versi U.S. Patent No. D691,763

WARRANTY:

5-year limited warranty. Complete warranty terms located at: www.acuitybrands.com/CustomerResources/terms_and_conditions.aspx

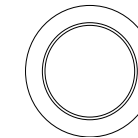
Note: Actual performance may differ as a result of end-user environment and application. All values are design or typical values, measured under laboratory conditions at 25 °C. Specifications subject to change without notice.

Dimensions

7"
Height: 1-3/4 (4.4)
Width: 7-1/4 (18.4)
Weight: 1.1lbs (.5 kg)



13"
Height: 2-1/2 (6.4)
Width: 13 (33.0)
Weight: 3.2lbs



All dimensions are inches (centimeters) unless otherwise indicated.



forrest@forkdesign.us

Vine Furniture // Change of Occupancy // 122 Summit Hill Drive Knoxville TN 37902

project number : 1805

ddrb.8
lighting specs

2019.07.05

Revised: 7/5/2019