



Staff Report

Knoxville Historic Zoning Commission

File Number: 1-C-25-HZ

Meeting: 1/16/2025
Applicant: Chad Taylor, TaylorVan LLC
Owner: Chad Taylor, TaylorVan LLC

Property Information

Location: 730 Deery St. **Parcel ID** 94 D J 003
District: Fourth and Gill H
Zoning: RN-3 (General Residential Neighborhood)
Description: N/A
Vacant lot.

Description of Work

Level II Major Repair or Replacement

Revision to previously issued COA 8-B-24-HZ for a new primary structure, related to windows. Removal of installed 3/1, double-hung, aluminum-clad wood windows with false internal muntins. Installation of new 1/1 aluminum-clad wood, or fiberglass, windows in existing openings.

Applicable Design Guidelines

Fourth and Gill Design Guidelines, adopted by the Knoxville City Council on April 20, 1999 and June 29, 1999.
Windows

1. Vinyl and aluminum replacement windows should not be used.
4. If replacement windows are necessary, they should be the same overall size as the originals, with the same pane division, and the same muntin style and exterior depth, width and profile. False muntins or grids should not be used.

Comments

Staff Findings

1. The previously issued COA approved "3/1, double-hung, aluminum-clad wood" windows. The window specifications that were submitted to staff did not indicate false internal muntins, which are prohibited in Fourth and Gill. These were installed and will be removed and replaced.
2. The windows will be modified to be 1/1 and double-hung, which is an appropriate profile in new construction. Double-hung windows are more appropriate for the historic context than single-hung windows.
3. Both fiberglass and aluminum-clad wood can be appropriate materials for windows in new construction in Fourth and Gill.

Staff Recommendation

Staff recommends approval of Certificate 1-C-25-HZ, subject to the condition that all replacement windows be double-hung.



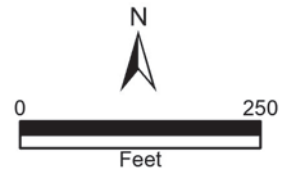
1-C-25-HZ
APPLICATION FOR CERTIFICATE OF APPROPRIATENESS



730 Deery St. 37917
 Fourth and Gill H

Original Print Date: 8/6/2024
 Knoxville/Knox County Planning -- Historic Zoning Commission

Petitioner: Chad Taylor





DESIGN REVIEW REQUEST

- DOWNTOWN DESIGN (DK)
- HISTORIC ZONING (H)
- INFILL HOUSING (IH)

Chad Taylor - TaylorVan LLC.

Applicant		1-C-25-HZ
9/19/2024	1/16/2025	8-D-24-HZ
Date Filed	Meeting Date (if applicable)	File Number(s)

CORRESPONDENCE

All correspondence related to this application should be directed to the approved contact listed below.

- Owner
- Contractor
- Engineer
- Architect/Landscape Architect

Chad Taylor	TaylorVan LLC.		
Name	Company		
11409 Municipal Center Dr. Unit 22116	Knoxville	TN	37933
Address	City	State	Zip
615-429-6801	taylorvan1010@gmail.com		
Phone	Email		

CURRENT PROPERTY INFO

Chad Taylor	11409 Municipal Center Dr.#22116	615.429.6801
Owner Name (if different from applicant)	Owner Address	Owner Phone
730 Deery Street Knoxville, TN 37917	94 D J 003	
Property Address	Parcel ID	
4th & Gill H		
Neighborhood	Zoning	

AUTHORIZATION

		
Staff Signature	Please Print	Date
	Chad Taylor	12/30/2024
Applicant Signature	Please Print	Date

REQUEST

DOWNTOWN DESIGN

Level 1:

- Signs Alteration of an existing building/structure

Level 2:

- Addition to an existing building/structure

Level 3:

- Construction of new building/structure Site design, parking, plazas, landscape

See required Downtown Design attachment for more details.

Brief description of work: _____

HISTORIC ZONING

Level 1:

- Signs Routine repair of siding, windows, roof, or other features, in-kind; Installation of gutters, storm windows/doors

Level 2:

- Major repair, removal, or replacement of architectural elements or materials Additions and accessory structures

Level 3:

- Construction of a new primary building

Level 4:

- Relocation of a contributing structure Demolition of a contributing structure

See required Historic Zoning attachment for more details.

Brief description of work: Would like to use the existing installed windows with interior muntins/grids to match others found in the neighborhood.

INFILL HOUSING

Level 1:

- Driveways, parking pads, access point, garages or similar facilities Subdivisions

Level 2:

- Additions visible from the primary street Changes to porches visible from the primary street

Level 3:

- New primary structure
 Site built Modular Multi-Sectional

See required Infill Housing attachment for more details.

Brief description of work: _____

STAFF USE ONLY

ATTACHMENTS

- Downtown Design Checklist
 Historic Zoning Design Checklist
 Infill Housing Design Checklist

ADDITIONAL REQUIREMENTS

- Property Owners / Option Holders

Level 1: \$50 • **Level 2:** \$100 • **Level 3:** \$250 • **Level 4:** \$500

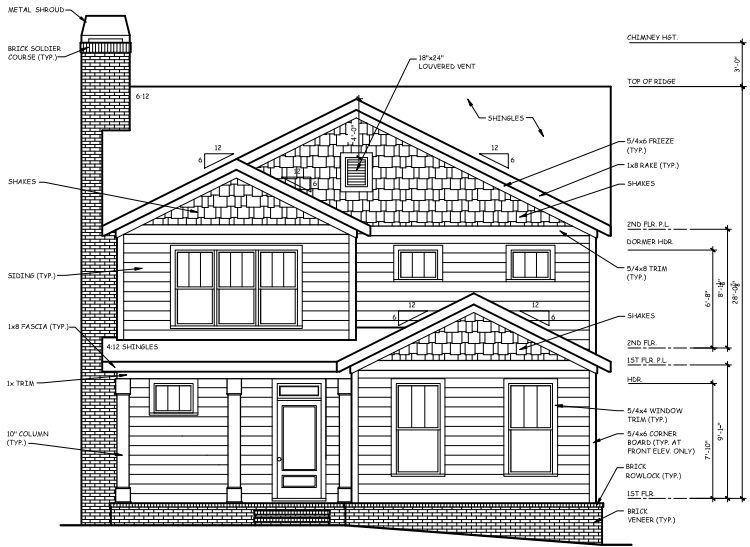
FEE 1:

FEE 2:

FEE 3:

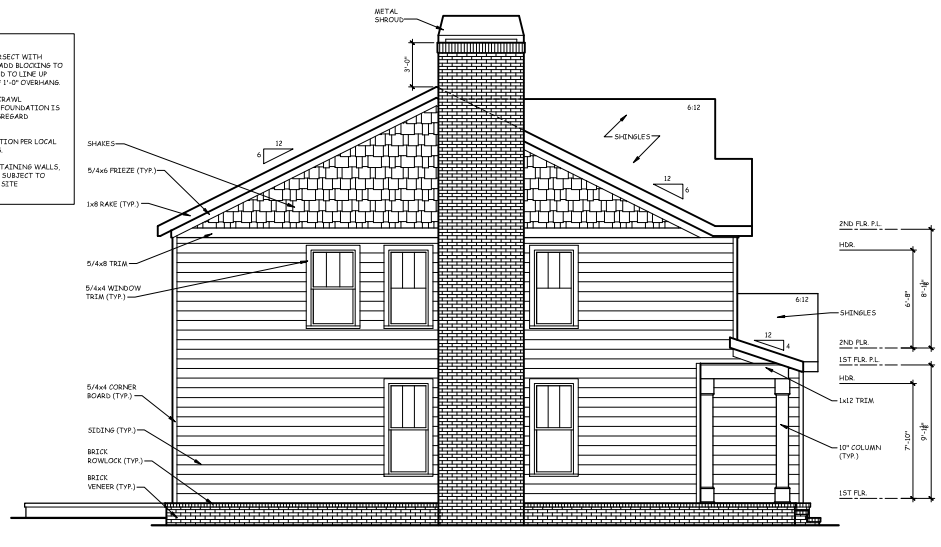
TOTAL:

Pd. 01.03.2025, SG

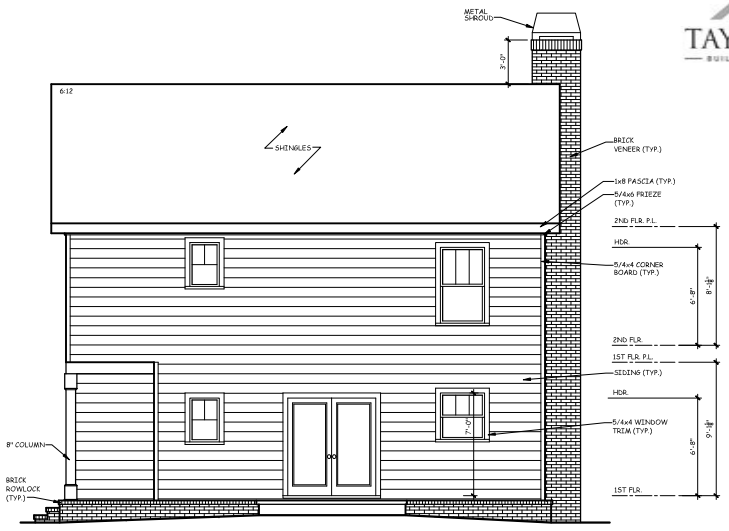


1 FRONT ELEVATION
ALL SCALE: 1/4" = 1'-0"

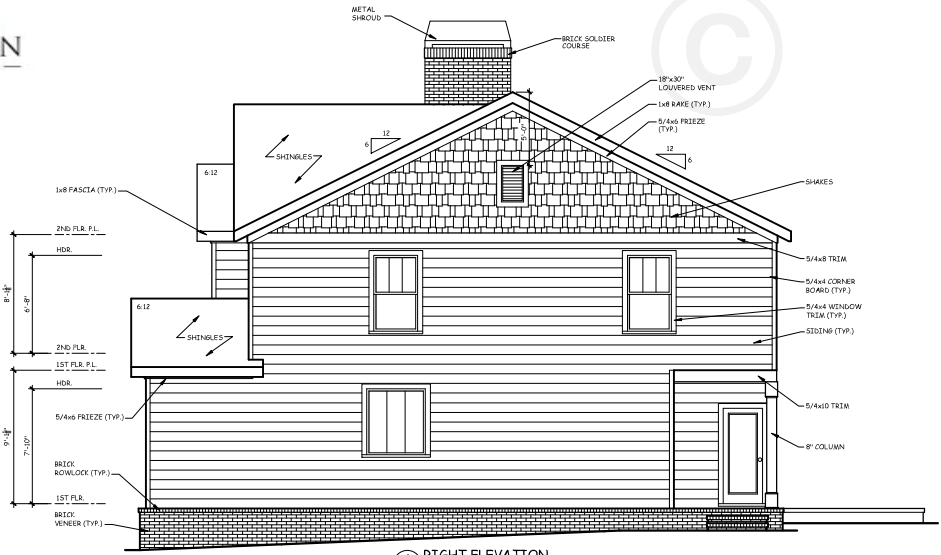
NOTE:
 1. WHEN TWO ROOFS INTERSECT WITH DIFFERENT ROOF PITCHES, ADD BLOCKING TO STEEPER ROOF AS REQUIRED TO LINE UP FASCIAS AT A MINIMUM OF 1'-0" OVERHANG.
 2. ELEVATIONS REFLECT A CRAWL FOUNDATION IF ANOTHER FOUNDATION IS USED, BUILDER SHOULD DISREGARD FOUNDATION SHOWN.
 3. PROVIDE ATTIC VENTILATION PER LOCAL CODES AND REQUIREMENTS.
 4. FOUNDATION WALLS, RETAINING WALLS, WINDOWS AND DOORS ARE SUBJECT TO CHANGE DUE TO CHANGING SITE CONDITIONS.



3 LEFT ELEVATION
ALL SCALE: 1/4" = 1'-0"



2 REAR ELEVATION
ALL SCALE: 1/4" = 1'-0"



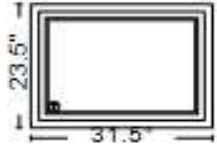
4 RIGHT ELEVATION
ALL SCALE: 1/4" = 1'-0"

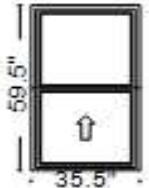
FRONT & REAR
EXTERIOR ELEVATIONS



SHEET

A1.1

Line #	Location:	Attributes	
10	STAIRWELL DOWNSTAIRS	Impervia, Sash Set, Fixed, 31.5 X 23.5, Black	<u>Qty</u> 1
	 <p>PK # 2182</p> <p>Viewed From Exterior Rough Opening: 32" X 24"</p>	<p>1: 3224 Fixed Sash Set Frame Size: 31 1/2 X 23 1/2 General Information: Standard, Duracast®, Block, No Foam Insulated, 3", 1 5/16", 1 11/16" Exterior Color / Finish: Black Interior Color / Finish: White, Two Color Glass: Insulated Tempered Low-E Advanced Low-E Insulating Glass Argon Non High Altitude Performance Information: U-Factor 0.29, SHGC 0.29, VLT 0.55, CPD PEL-N-104-01234-00002, Performance Class CW, PG 50, Calculated Positive DP Rating 50, Calculated Negative DP Rating 50, STC 27, OITC 23 Grille: No Grille, Wrapping Information: Standard Fin, Factory Applied, No Exterior Trim, 4 9/16", Prefinished White Paint, Factory Applied, Manufacturer Recommended Clearance, Perimeter Length = 110".</p>	

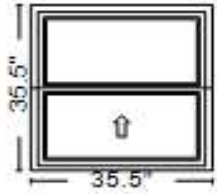
Line #	Location:	Attributes	
15	FAMILY ROOM	Impervia, Single Hung, 35.5 X 59.5, Black	<u>Qty</u> 2
	 <p>PK # 2182</p> <p>Viewed From Exterior Rough Opening: 36" X 60"</p>	<p>1: 3660 Single Hung, Equal Frame Size: 35 1/2 X 59 1/2 General Information: Standard, Duracast®, Block, No Foam Insulated, 3", 1 5/16", 1 11/16" Exterior Color / Finish: Black Interior Color / Finish: White, Two Color Glass: Insulated Low-E Advanced Low-E Insulating Glass Argon Non High Altitude Hardware Options: Cam-Action Lock, White Screen: Half Screen, InView™ Performance Information: U-Factor 0.30, SHGC 0.28, VLT 0.53, CPD PEL-N-102-01294-00004, Performance Class LC, PG 50, STC 26, OITC 22, Clear Opening Width 31.9375, Clear Opening Height 26.1875, Clear Opening Area 5.808078, Egress Meets minimum clear opening and 5.7 sq.ft Grille: No Grille, Wrapping Information: Standard Fin, Factory Applied, No Exterior Trim, 6 9/16", Prefinished White Paint, Factory Applied, Manufacturer Recommended Clearance, Perimeter Length = 190".</p>	

Line #	Location:	Attributes
--------	-----------	------------

20 KITCHEN

Impervia, Single Hung, 35.5 X 35.5, Black

Qty
1



PK #
2182

1: 3636 Single Hung, Equal
 Frame Size: 35 1/2 X 35 1/2
 General Information: Standard, Duracast®, Block, No Foam Insulated, 3", 1 5/16", 1 11/16"
 Exterior Color / Finish: Black
 Interior Color / Finish: White, Two Color
 Glass: Insulated Low-E Advanced Low-E Insulating Glass Argon Non High Altitude
 Hardware Options: Cam-Action Lock, White
 Screen: Half Screen, InView™

Viewed From Exterior
 Rough Opening: 36" X 36"

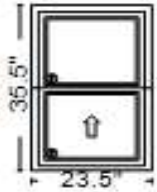
Performance Information: U-Factor 0.30, SHGC 0.28, VLT 0.53, CPD PEL-N-102-01294-00004, Performance Class LC, PG 50, STC 26, OITC 22, Clear Opening Width 31.9375, Clear Opening Height 14.1875, Clear Opening Area 3.14662, Egress Does not meet typical United States egress, but may comply with local code requirements
 Grille: No Grille,
 Wrapping Information: Standard Fin, Factory Applied, No Exterior Trim, 4 9/16", Prefinished White Paint, Factory Applied, Manufacturer Recommended Clearance, Perimeter Length = 142".

Line #	Location:	Attributes
--------	-----------	------------

25 REAR PORCH ENTRY

Impervia, Single Hung, 23.5 X 35.5, Black

Qty
1

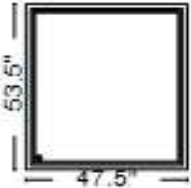


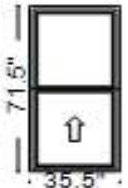
PK #
2182

1: 2436 Single Hung, Equal
 Frame Size: 23 1/2 X 35 1/2
 General Information: Standard, Duracast®, Block, No Foam Insulated, 3", 1 5/16", 1 11/16"
 Exterior Color / Finish: Black
 Interior Color / Finish: White, Two Color
 Glass: Insulated Tempered Low-E Advanced Low-E Insulating Glass Argon Non High Altitude
 Hardware Options: Cam-Action Lock, White
 Screen: Half Screen, InView™

Viewed From Exterior
 Rough Opening: 24" X 36"

Performance Information: U-Factor 0.30, SHGC 0.28, VLT 0.53, CPD PEL-N-102-01294-00002, Performance Class LC, PG 50, STC 26, OITC 22, Clear Opening Width 19.9375, Clear Opening Height 14.1875, Clear Opening Area 1.964328, Egress Does not meet typical United States egress, but may comply with local code requirements
 Grille: No Grille,
 Wrapping Information: Standard Fin, Factory Applied, No Exterior Trim, 4 9/16", Prefinished White Paint, Factory Applied, Manufacturer Recommended Clearance, Perimeter Length = 118".

Line #	Location:	Attributes	
30	MASTER BATHROOM	 <p>Viewed From Exterior Rough Opening: 48" X 54"</p>	<p>Impervia, Sash Set, Fixed, 47.5 X 53.5, Black</p> <p>Qty 1</p> <p>PK # 2182</p> <p>1: 4854 Fixed Casement Frame Size: 47 1/2 X 53 1/2 General Information: Standard, Duracast®, Block, No Foam Insulated, 3 1/4", 1 5/16", 1 15/16" Exterior Color / Finish: Black Interior Color / Finish: White, Two Color Glass: Insulated Dual Tempered Obscure Low-E Obscure Advanced Low-E Insulating Glass Argon Non High Altitude Performance Information: U-Factor 0.27, SHGC 0.29, VLT 0.55, CPD PEL-N-276-00019-00001, Performance Class LC, PG 50, Calculated Positive DP Rating 50, Calculated Negative DP Rating 60, STC 30, OITC 25 Grille: No Grille, Wrapping Information: Standard Fin, Factory Applied, No Exterior Trim, 4 9/16", Prefinished White Paint, Factory Applied, Manufacturer Recommended Clearance, Perimeter Length = 202".</p> <p>Obscure Glass Style: Pattern62(Standard)</p>

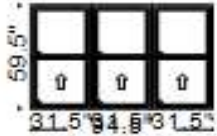
Line #	Location:	Attributes	
35	MASTER BEDROOM	 <p>Viewed From Exterior Rough Opening: 36" X 72"</p>	<p>Impervia, Single Hung, 35.5 X 71.5, Black</p> <p>Qty 2</p> <p>PK # 2182</p> <p>1: 3672 Single Hung, Equal Frame Size: 35 1/2 X 71 1/2 General Information: Standard, Duracast®, Block, No Foam Insulated, 3", 1 5/16", 1 11/16" Exterior Color / Finish: Black Interior Color / Finish: White, Two Color Glass: Insulated Low-E Advanced Low-E Insulating Glass Argon Non High Altitude Hardware Options: Cam-Action Lock, White Screen: Half Screen, InView™ Performance Information: U-Factor 0.30, SHGC 0.28, VLT 0.53, CPD PEL-N-102-01294-00004, Performance Class LC, PG 40, Calculated Positive DP Rating 40, Calculated Negative DP Rating 40, STC 26, OITC 22, Clear Opening Width 31.9375, Clear Opening Height 32.1875, Clear Opening Area 7.138807, Egress Meets minimum clear opening and 5.7 sq.ft Grille: No Grille, Wrapping Information: Standard Fin, Factory Applied, No Exterior Trim, 4 9/16", Prefinished White Paint, Factory Applied, Manufacturer Recommended Clearance, Perimeter Length = 214".</p>

Line #	Location:	Attributes
--------	-----------	------------

40 LOFT

Impervia, 3-Wide Single Hung, 94.5 X 59.5, Black

Qty
1




PK #
2182

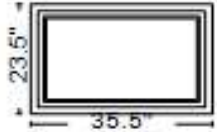
Viewed From Exterior
Rough Opening: 95" X 60"

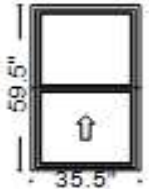
1: 3260 Single Hung, Equal
 Frame Size: 31 1/2 X 59 1/2
 General Information: Standard, Duracast®, Block, No Foam Insulated, 3", 1 5/16", 1 11/16"
 Exterior Color / Finish: Black
 Interior Color / Finish: White, Two Color
 Glass: Insulated Tempered Low-E Advanced Low-E Insulating Glass Argon Non High Altitude
 Hardware Options: Cam-Action Lock, White
 Screen: Half Screen, InView™
 Performance Information: U-Factor 0.30, SHGC 0.28, VLT 0.53, CPD PEL-N-102-01294-00002, Performance Class LC, PG 50, STC 26, OITC 22, Egress
 Meets minimum clear opening and 5.0 sq.ft
 Grille: No Grille,

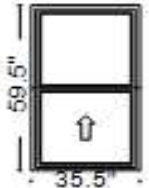
2: 3260 Single Hung, Equal
 Frame Size: 31 1/2 X 59 1/2
 General Information: Standard, Duracast®, Block, No Foam Insulated, 3", 1 5/16", 1 11/16"
 Exterior Color / Finish: Black
 Interior Color / Finish: White, Two Color
 Glass: Insulated Tempered Low-E Advanced Low-E Insulating Glass Argon Non High Altitude
 Hardware Options: Cam-Action Lock, White
 Screen: Half Screen, InView™
 Performance Information: U-Factor 0.30, SHGC 0.28, VLT 0.53, CPD PEL-N-102-01294-00002, Performance Class LC, PG 50, STC 26, OITC 22, Egress
 Meets minimum clear opening and 5.0 sq.ft
 Grille: No Grille,

3: 3260 Single Hung, Equal
 Frame Size: 31 1/2 X 59 1/2
 General Information: Standard, Duracast®, Block, No Foam Insulated, 3", 1 5/16", 1 11/16"
 Exterior Color / Finish: Black
 Interior Color / Finish: White, Two Color
 Glass: Insulated Tempered Low-E Advanced Low-E Insulating Glass Argon Non High Altitude
 Hardware Options: Cam-Action Lock, White
 Screen: Half Screen, InView™
 Performance Information: U-Factor 0.30, SHGC 0.28, VLT 0.53, CPD PEL-N-102-01294-00002, Performance Class LC, PG 50, STC 26, OITC 22, Egress
 Meets minimum clear opening and 5.0 sq.ft
 Grille: No Grille,
 Vertical Mull 1: FactoryMull, Standard Joining Mullion, Frame To Frame Width- 0", Mull Design Pressure- 20
 Vertical Mull 2: FactoryMull, Standard Joining Mullion, Frame To Frame Width- 0", Mull Design Pressure- 20
 Wrapping Information: Standard Fin, Factory Applied, Factory Applied, No Exterior Trim, 4 9/16", Prefinished White Paint, Factory Applied, Manufacturer
 Recommended Clearance, Perimeter Length = 308".

Line #	Location:	Attributes	
45	LOFT	Impervia, Sash Set, Fixed, 35.5 X 23.5, Black	<u>Qty</u> 1
		 <p>PK # 2182</p> <p>Viewed From Exterior Rough Opening: 36" X 24"</p>	
		<p>1: 3624 Fixed Sash Set Frame Size: 35 1/2 X 23 1/2 General Information: Standard, Duracast®, Block, No Foam Insulated, 3", 1 5/16", 1 11/16" Exterior Color / Finish: Black Interior Color / Finish: White, Two Color Glass: Insulated Low-E Advanced Low-E Insulating Glass Argon Non High Altitude Performance Information: U-Factor 0.29, SHGC 0.30, VLT 0.55, CPD PEL-N-104-01234-00004, Performance Class CW, PG 50, Calculated Positive DP Rating 50, Calculated Negative DP Rating 50 Grille: No Grille, Wrapping Information: Standard Fin, Factory Applied, No Exterior Trim, 4 9/16", Prefinished White Paint, Factory Applied, Manufacturer Recommended Clearance, Perimeter Length = 118".</p>	

Line #	Location:	Attributes	
47	WIC	Impervia, Sash Set, Fixed, 35.5 X 23.5, Black	<u>Qty</u> 1
		 <p>PK # 2182</p> <p>Viewed From Exterior Rough Opening: 36" X 24"</p>	
		<p>1: 3624 Fixed Sash Set Frame Size: 35 1/2 X 23 1/2 General Information: Standard, Duracast®, Block, No Foam Insulated, 3", 1 5/16", 1 11/16" Exterior Color / Finish: Black Interior Color / Finish: White, Two Color Glass: Insulated Low-E Advanced Low-E Insulating Glass Argon Non High Altitude Performance Information: U-Factor 0.29, SHGC 0.30, VLT 0.55, CPD PEL-N-104-01234-00004, Performance Class CW, PG 50, Calculated Positive DP Rating 50, Calculated Negative DP Rating 50 Grille: No Grille, Wrapping Information: Standard Fin, Factory Applied, No Exterior Trim, 4 9/16", Prefinished White Paint, Factory Applied, Manufacturer Recommended Clearance, Perimeter Length = 118".</p>	

Line #	Location:	Attributes	
50	FAMILY R/2ND FLOOR	 <p>Viewed From Exterior Rough Opening: 36" X 60"</p>	<p>Impervia, Single Hung, 35.5 X 59.5, Black</p> <p>Qty 2</p>
	PK # 2182	<p>1: 3660 Single Hung, Equal Frame Size: 35 1/2 X 59 1/2 General Information: Standard, Duracast®, Block, No Foam Insulated, 3", 1 5/16", 1 11/16" Exterior Color / Finish: Black Interior Color / Finish: White, Two Color Glass: Insulated Low-E Advanced Low-E Insulating Glass Argon Non High Altitude Hardware Options: Cam-Action Lock, White Screen: Half Screen, InView™ Performance Information: U-Factor 0.30, SHGC 0.28, VLT 0.53, CPD PEL-N-102-01294-00004, Performance Class LC, PG 50, STC 26, OITC 22, Clear Opening Width 31.9375, Clear Opening Height 26.1875, Clear Opening Area 5.808078, Egress Meets minimum clear opening and 5.7 sq.ft Grille: No Grille, Wrapping Information: Standard Fin, Factory Applied, No Exterior Trim, 6 9/16", Prefinished White Paint, Factory Applied, Manufacturer Recommended Clearance, Perimeter Length = 190".</p>	

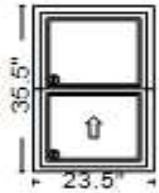
Line #	Location:	Attributes	
55	BEDROOM 3	 <p>Viewed From Exterior Rough Opening: 36" X 60"</p>	<p>Impervia, Single Hung, 35.5 X 59.5, Black</p> <p>Qty 2</p>
	PK # 2182	<p>1: 3660 Single Hung, Equal Frame Size: 35 1/2 X 59 1/2 General Information: Standard, Duracast®, Block, No Foam Insulated, 3", 1 5/16", 1 11/16" Exterior Color / Finish: Black Interior Color / Finish: White, Two Color Glass: Insulated Low-E Advanced Low-E Insulating Glass Argon Non High Altitude Hardware Options: Cam-Action Lock, White Screen: Half Screen, InView™ Performance Information: U-Factor 0.30, SHGC 0.28, VLT 0.53, CPD PEL-N-102-01294-00004, Performance Class LC, PG 50, STC 26, OITC 22, Clear Opening Width 31.9375, Clear Opening Height 26.1875, Clear Opening Area 5.808078, Egress Meets minimum clear opening and 5.7 sq.ft Grille: No Grille, Wrapping Information: Standard Fin, Factory Applied, No Exterior Trim, 4 9/16", Prefinished White Paint, Factory Applied, Manufacturer Recommended Clearance, Perimeter Length = 190".</p>	

Line #	Location:	Attributes
--------	-----------	------------

60 BATHROOM 3/UPSTAIRS

Impervia, Single Hung, 23.5 X 35.5, Black

Qty
1



PK #
2182

1: 2436 Single Hung, Equal
 Frame Size: 23 1/2 X 35 1/2
 General Information: Standard, Duracast®, Block, No Foam Insulated, 3", 1 5/16", 1 11/16"
 Exterior Color / Finish: Black
 Interior Color / Finish: White, Two Color
 Glass: Insulated Tempered Low-E Advanced Low-E Insulating Glass Argon Non High Altitude
 Hardware Options: Cam-Action Lock, White
 Screen: No Screen
 Performance Information: U-Factor 0.30, SHGC 0.28, VLT 0.53, CPD PEL-N-102-01294-00002, Performance Class LC, PG 50, STC 26, OITC 22, Clear Opening Width 19.9375, Clear Opening Height 14.1875, Clear Opening Area 1.964328, Egress Does not meet typical United States egress, but may comply with local code requirements
 Grille: No Grille,
 Wrapping Information: Standard Fin, Factory Applied, No Exterior Trim, 4 9/16", Prefinished White Paint, Factory Applied, Manufacturer Recommended Clearance, Perimeter Length = 118".

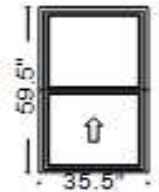
Viewed From Exterior
 Rough Opening: 24" X 36"

Line #	Location:	Attributes
--------	-----------	------------

65 BEDROOM 4

Impervia, Single Hung, 35.5 X 59.5, Black

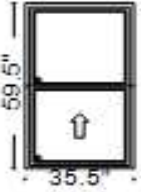
Qty
1



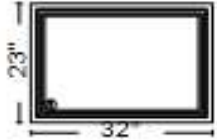
PK #
2182

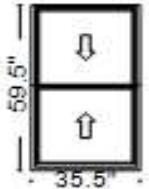
1: 3660 Single Hung, Equal
 Frame Size: 35 1/2 X 59 1/2
 General Information: Standard, Duracast®, Block, No Foam Insulated, 3", 1 5/16", 1 11/16"
 Exterior Color / Finish: Black
 Interior Color / Finish: White, Two Color
 Glass: Insulated Low-E Advanced Low-E Insulating Glass Argon Non High Altitude
 Hardware Options: Cam-Action Lock, White
 Screen: Half Screen, InView™
 Performance Information: U-Factor 0.30, SHGC 0.28, VLT 0.53, CPD PEL-N-102-01294-00004, Performance Class LC, PG 50, STC 26, OITC 22, Clear Opening Width 31.9375, Clear Opening Height 26.1875, Clear Opening Area 5.808078, Egress Meets minimum clear opening and 5.7 sq.ft
 Grille: No Grille,
 Wrapping Information: Standard Fin, Factory Applied, No Exterior Trim, 4 9/16", Prefinished White Paint, Factory Applied, Manufacturer Recommended Clearance, Perimeter Length = 190".

Viewed From Exterior
 Rough Opening: 36" X 60"

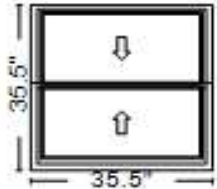
Line #	Location:	Attributes	
70	BEDROOM 2	Impervia, Single Hung, 35.5 X 59.5, Black	Qty 1
 <p data-bbox="138 394 327 418">Viewed From Exterior</p> <p data-bbox="100 423 352 448">Rough Opening: 36" X 60"</p>		<p data-bbox="359 277 401 302">PK #</p> <p data-bbox="359 310 411 334">2182</p> <p data-bbox="478 250 1940 568"> 1: 3660 Single Hung, Equal Frame Size: 35 1/2 X 59 1/2 General Information: Standard, Duracast®, Block, No Foam Insulated, 3", 1 5/16", 1 11/16" Exterior Color / Finish: Black Interior Color / Finish: White, Two Color Glass: Insulated Tempered Low-E Advanced Low-E Insulating Glass Argon Non High Altitude Hardware Options: Cam-Action Lock, White Screen: Half Screen, InView™ Performance Information: U-Factor 0.30, SHGC 0.28, VLT 0.53, CPD PEL-N-102-01294-00002, Performance Class LC, PG 50, STC 26, OITC 22, Clear Opening Width 31.9375, Clear Opening Height 26.1875, Clear Opening Area 5.808078, Egress Meets minimum clear opening and 5.7 sq.ft Grille: No Grille, Wrapping Information: Standard Fin, Factory Applied, No Exterior Trim, 4 9/16", Prefinished White Paint, Factory Applied, Manufacturer Recommended Clearance, Perimeter Length = 190". </p>	

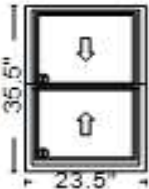
Thank You For Your Interest In Pella® Products

Line #	Location:	Attributes	
10	STAIRWELL	Lifestyle, Sash Set, Fixed, 32 X 23, Without HGP, Black	Qty 1
	 <p>PK # 2182</p> <p>Viewed From Exterior Rough Opening: 32 - 3/4" X 23 - 3/4"</p>	<p>1: 3223 Fixed Sash Set Frame Size: 32 X 23 Unit Type: No Program General Information: No Package, Without Hinged Glass Panel, Clad, Pine, 5", 3 11/16" Exterior Color / Finish: Standard Enduraclad, Black Interior Color / Finish: Bright White Paint Interior Glass: Insulated Tempered Low-E Advanced Low-E Insulating Glass Argon Non High Altitude Performance Information: U-Factor 0.27, SHGC 0.31, VLT 0.58, CPD PEL-N-229-00949-00001, Performance Class LC, PG 50, Calculated Positive DP Rating 50, Calculated Negative DP Rating 50, STC 28, OITC 24 Grille: No Grille, Wrapping Information: Foldout Fins, Factory Applied, No Exterior Trim, 4 9/16", 5 7/8", Standard Four Sided Jamb Extension, Factory Applied, Manufacturer Recommended Clearance, Perimeter Length = 110".</p>	

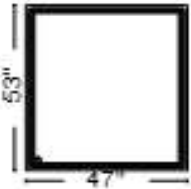
Line #	Location:	Attributes	
15	FAMILY ROOM	Lifestyle, Double Hung, 35.5 X 59.5, Without HGP, Black	Qty 2
	 <p>PK # 2182</p> <p>Viewed From Exterior Rough Opening: 36 - 1/4" X 60 - 1/4"</p>	<p>1: 35.559.5 Double Hung, Equal Frame Size: 35 1/2 X 59 1/2 Unit Type: No Program General Information: No Package, Without Hinged Glass Panel, Clad, Pine, 5", 3 11/16", Jambliner Color: Black Exterior Color / Finish: Standard Enduraclad, Black Interior Color / Finish: Bright White Paint Interior Glass: Insulated Low-E Advanced Low-E Insulating Glass Argon Non High Altitude Hardware Options: Cam-Action Lock, 2 Locks, White, No Limited Opening Hardware, No Sash Lift, No Integrated Sensor Screen: Full Screen, Black, InView™ Performance Information: U-Factor 0.30, SHGC 0.30, VLT 0.57, CPD PEL-N-35-00514-00001, Performance Class LC, PG 35, Calculated Positive DP Rating 35, Calculated Negative DP Rating 35, STC 27, OITC 23, Clear Opening Width 32.312, Clear Opening Height 26.5, Clear Opening Area 5.946306, Egress Meets minimum clear opening and 5.7 sq.ft Grille: No Grille, Wrapping Information: Foldout Fins, Factory Applied, No Exterior Trim, 6 9/16", 7 7/8", Standard Four Sided Jamb Extension, Factory Applied, Manufacturer Recommended Clearance, Perimeter Length = 190".</p>	

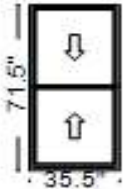
Customer Notes: 6 9/16 JAMB EXTENSION FOR 2X6 WALL

Line #	Location:	Attributes	
20	KITCHEN	Lifestyle, Double Hung, 35.5 X 35.5, Without HGP, Black	<u>Qty</u> 1
	 <p>Viewed From Exterior Rough Opening: 36 - 1/4" X 36 - 1/4"</p>	<p>1: 35.535.5 Double Hung, Equal Frame Size: 35 1/2 X 35 1/2 Unit Type: No Program General Information: No Package, Without Hinged Glass Panel, Clad, Pine, 5", 3 11/16", Jambliner Color: Black Exterior Color / Finish: Standard Enduraclad, Black Interior Color / Finish: Bright White Paint Interior Glass: Insulated Low-E Advanced Low-E Insulating Glass Argon Non High Altitude Hardware Options: Cam-Action Lock, 2 Locks, White, No Limited Opening Hardware, No Sash Lift, No Integrated Sensor Screen: Full Screen, Black, InView™ Performance Information: U-Factor 0.30, SHGC 0.30, VLT 0.57, CPD PEL-N-35-00514-00001, Performance Class LC, PG 35, Calculated Positive DP Rating 35, Calculated Negative DP Rating 35, STC 27, OITC 23, Clear Opening Width 32.312, Clear Opening Height 14.5, Clear Opening Area 3.253639, Egress Does not meet typical United States egress, but may comply with local code requirements Grille: No Grille, Wrapping Information: Foldout Fins, Factory Applied, No Exterior Trim, 4 9/16", 5 7/8", Standard Four Sided Jamb Extension, Factory Applied, Manufacturer Recommended Clearance, Perimeter Length = 142".</p>	

Line #	Location:	Attributes	
25	REAR PORCH ENTRY	Lifestyle, Double Hung, 23.5 X 35.5, Without HGP, Black	<u>Qty</u> 1
	 <p>Viewed From Exterior Rough Opening: 24 - 1/4" X 36 - 1/4"</p>	<p>1: 23.535.5 Double Hung, Equal Frame Size: 23 1/2 X 35 1/2 Unit Type: No Program General Information: No Package, Without Hinged Glass Panel, Clad, Pine, 5", 3 11/16", Jambliner Color: Black Exterior Color / Finish: Standard Enduraclad, Black Interior Color / Finish: Bright White Paint Interior Glass: Insulated Tempered Low-E Advanced Low-E Insulating Glass Argon Non High Altitude Hardware Options: Cam-Action Lock, 1 Lock, White, No Limited Opening Hardware, No Sash Lift, No Integrated Sensor Screen: Full Screen, Black, InView™ Performance Information: U-Factor 0.30, SHGC 0.30, VLT 0.56, CPD PEL-N-35-00517-00001, Performance Class LC, PG 50, Calculated Positive DP Rating 50, Calculated Negative DP Rating 50, STC 27, OITC 23, Clear Opening Width 20.312, Clear Opening Height 14.5, Clear Opening Area 2.045305, Egress Does not meet typical United States egress, but may comply with local code requirements Grille: No Grille, Wrapping Information: Foldout Fins, Factory Applied, No Exterior Trim, 4 9/16", 5 7/8", Standard Four Sided Jamb Extension, Factory Applied, Manufacturer Recommended Clearance, Perimeter Length = 118".</p>	

For more information regarding the finishing, maintenance, service and warranty of all Pella® products, visit the Pella® website at www.pella.com

Line #	Location:	Attributes	
30	MASTER BATHROOM	Lifestyle, Sash Set, Fixed, 47 X 53, Without HGP, Black	<u>Qty</u> 1
	 <p>PK # 2182</p> <p>Viewed From Exterior Rough Opening: 47 - 3/4" X 53 - 3/4"</p>	<p>1: 4753 Fixed Sash Set Frame Size: 47 X 53 Unit Type: No Program General Information: No Package, Without Hinged Glass Panel, Clad, Pine, 5", 3 11/16" Exterior Color / Finish: Standard Enduraclad, Black Interior Color / Finish: Bright White Paint Interior Glass: Insulated Tempered Obscure Low-E Obscure Advanced Low-E Insulating Glass Argon Non High Altitude Performance Information: U-Factor 0.28, SHGC 0.30, VLT 0.57, CPD PEL-N-229-00965-00001, Performance Class LC, PG 30, Calculated Positive DP Rating 30, Calculated Negative DP Rating 30, STC 28, OITC 24 Grille: No Grille, Wrapping Information: Foldout Fins, Factory Applied, No Exterior Trim, 4 9/16", 5 7/8", Standard Four Sided Jamb Extension, Factory Applied, Manufacturer Recommended Clearance, Perimeter Length = 200".</p> <p>Obscure Glass Style: Pattern62(Standard)</p>	

Line #	Location:	Attributes	
35	MASTER BEDROOM	Lifestyle, Double Hung, 35.5 X 71.5, Without HGP, Black	<u>Qty</u> 2
	 <p>PK # 2182</p> <p>Viewed From Exterior Rough Opening: 36 - 1/4" X 72 - 1/4"</p>	<p>1: 35.571.5 Double Hung, Equal Frame Size: 35 1/2 X 71 1/2 Unit Type: No Program General Information: No Package, Without Hinged Glass Panel, Clad, Pine, 5", 3 11/16", Jambliner Color: Black Exterior Color / Finish: Standard Enduraclad, Black Interior Color / Finish: Bright White Paint Interior Glass: Insulated Low-E Advanced Low-E Insulating Glass Argon Non High Altitude Hardware Options: Cam-Action Lock, 2 Locks, White, No Limited Opening Hardware, No Sash Lift, No Integrated Sensor Screen: Full Screen, Black, InView™ Performance Information: U-Factor 0.30, SHGC 0.30, VLT 0.57, CPD PEL-N-35-00514-00001, Performance Class LC, PG 30, Calculated Positive DP Rating 30, Calculated Negative DP Rating 30, STC 27, OITC 23, Clear Opening Width 32.312, Clear Opening Height 32.5, Clear Opening Area 7.292639, Egress Meets minimum clear opening and 5.7 sq.ft Grille: No Grille, Wrapping Information: Foldout Fins, Factory Applied, No Exterior Trim, 4 9/16", 5 7/8", Standard Four Sided Jamb Extension, Factory Applied, Manufacturer Recommended Clearance, Perimeter Length = 214".</p>	

For more information regarding the finishing, maintenance, service and warranty of all Pella® products, visit the Pella® website at www.pella.com

Line #	Location:	Attributes
--------	-----------	------------

40 LOFT

Lifestyle, 3-Wide Double Hung, 94.5 X 59.5, Without HGP, Black

Qty
1



PK #
2182


Viewed From Exterior
Rough Opening: 95 - 1/4" X 60 - 1/4"

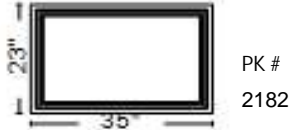
1: 31.559.5 Double Hung, Equal
 Frame Size: 31 1/2 X 59 1/2
 Unit Type: No Program
 General Information: No Package, Without Hinged Glass Panel, Clad, Pine, 5", 3 11/16", Jambliner Color: Black
 Exterior Color / Finish: Standard Enduraclad, Black
 Interior Color / Finish: Bright White Paint Interior
 Glass: Insulated Tempered Low-E Advanced Low-E Insulating Glass Argon Non High Altitude
 Hardware Options: Cam-Action Lock, 1 Lock, White, No Limited Opening Hardware, No Sash Lift, No Integrated Sensor
 Screen: Full Screen, Black, InView™
 Performance Information: U-Factor 0.30, SHGC 0.30, VLT 0.56, CPD PEL-N-35-00517-00001, Performance Class LC, PG 35, Calculated Positive DP Rating 35, Calculated Negative DP Rating 35, STC 27, OITC 23, Clear Opening Width 28.312, Clear Opening Height 26.5, Clear Opening Area 5.210195, Egress Meets minimum clear opening and 5.0 sq.ft
 Grille: No Grille,

2: 31.559.5 Double Hung, Equal
 Frame Size: 31 1/2 X 59 1/2
 Unit Type: No Program
 General Information: No Package, Without Hinged Glass Panel, Clad, Pine, 5", 3 11/16", Jambliner Color: Black
 Exterior Color / Finish: Standard Enduraclad, Black
 Interior Color / Finish: Bright White Paint Interior
 Glass: Insulated Tempered Low-E Advanced Low-E Insulating Glass Argon Non High Altitude
 Hardware Options: Cam-Action Lock, 1 Lock, White, No Limited Opening Hardware, No Sash Lift, No Integrated Sensor
 Screen: Full Screen, Black, InView™
 Performance Information: U-Factor 0.30, SHGC 0.30, VLT 0.56, CPD PEL-N-35-00517-00001, Performance Class LC, PG 35, Calculated Positive DP Rating 35, Calculated Negative DP Rating 35, STC 27, OITC 23, Clear Opening Width 28.312, Clear Opening Height 26.5, Clear Opening Area 5.210195, Egress Meets minimum clear opening and 5.0 sq.ft
 Grille: No Grille,

3: 31.559.5 Double Hung, Equal
 Frame Size: 31 1/2 X 59 1/2
 Unit Type: No Program
 General Information: No Package, Without Hinged Glass Panel, Clad, Pine, 5", 3 11/16", Jambliner Color: Black
 Exterior Color / Finish: Standard Enduraclad, Black
 Interior Color / Finish: Bright White Paint Interior
 Glass: Insulated Tempered Low-E Advanced Low-E Insulating Glass Argon Non High Altitude
 Hardware Options: Cam-Action Lock, 1 Lock, White, No Limited Opening Hardware, No Sash Lift, No Integrated Sensor
 Screen: Full Screen, Black, InView™
 Performance Information: U-Factor 0.30, SHGC 0.30, VLT 0.56, CPD PEL-N-35-00517-00001, Performance Class LC, PG 35, Calculated Positive DP Rating 35, Calculated Negative DP Rating 35, STC 27, OITC 23, Clear Opening Width 28.312, Clear Opening Height 26.5, Clear Opening Area 5.210195, Egress Meets minimum clear opening and 5.0 sq.ft
 Grille: No Grille,
 Vertical Mull 1: FactoryMull, Standard Joining Mullion, Mull Design Pressure- 20, Overall Thru Direction- Vertical
 Vertical Mull 2: FactoryMull, Standard Joining Mullion, Mull Design Pressure- 20, Overall Thru Direction- Vertical
 Wrapping Information: Foldout Fins, Factory Applied, No Head Drip Cap, No Exterior Trim, 4 9/16", 5 7/8", Standard Four Sided Jamb Extension, Factory Applied, Manufacturer Recommended Clearance, Perimeter Length = 308".

For more information regarding the finishing, maintenance, service and warranty of all Pella® products, visit the Pella® website at www.pella.com

Line #	Location:	Attributes	
45	LOFT	Lifestyle, Sash Set, Fixed, 35 X 23, Without HGP, Black	<u>Qty</u> 1
		 <p>Viewed From Exterior Rough Opening: 35 - 3/4" X 23 - 3/4"</p>	
		<p>1: 3523 Fixed Sash Set Frame Size: 35 X 23 Unit Type: No Program General Information: No Package, Without Hinged Glass Panel, Clad, Pine, 5", 3 11/16" Exterior Color / Finish: Standard Enduraclad, Black Interior Color / Finish: Bright White Paint Interior Glass: Insulated Low-E Advanced Low-E Insulating Glass Argon Non High Altitude Performance Information: U-Factor 0.27, SHGC 0.31, VLT 0.58, CPD PEL-N-229-00861-00001, Performance Class LC, PG 50, Calculated Positive DP Rating 50, Calculated Negative DP Rating 50 Grille: No Grille, Wrapping Information: Foldout Fins, Factory Applied, No Exterior Trim, 4 9/16", 5 7/8", Standard Four Sided Jamb Extension, Factory Applied, Manufacturer Recommended Clearance, Perimeter Length = 116".</p>	

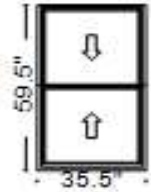
Line #	Location:	Attributes	
47	WIC	Lifestyle, Sash Set, Fixed, 35 X 23, Without HGP, Black	<u>Qty</u> 1
		 <p>Viewed From Exterior Rough Opening: 35 - 3/4" X 23 - 3/4"</p>	
		<p>1: 3523 Fixed Sash Set Frame Size: 35 X 23 Unit Type: No Program General Information: No Package, Without Hinged Glass Panel, Clad, Pine, 5", 3 11/16" Exterior Color / Finish: Standard Enduraclad, Black Interior Color / Finish: Bright White Paint Interior Glass: Insulated Low-E Advanced Low-E Insulating Glass Argon Non High Altitude Performance Information: U-Factor 0.27, SHGC 0.31, VLT 0.58, CPD PEL-N-229-00861-00001, Performance Class LC, PG 50, Calculated Positive DP Rating 50, Calculated Negative DP Rating 50 Grille: No Grille, Wrapping Information: Foldout Fins, Factory Applied, No Exterior Trim, 4 9/16", 5 7/8", Standard Four Sided Jamb Extension, Factory Applied, Manufacturer Recommended Clearance, Perimeter Length = 116".</p>	

Line #	Location:	Attributes
--------	-----------	------------

50 FAMILY R/2ND FLOOR

Lifestyle, Double Hung, 35.5 X 59.5, Without HGP, Black

Qty
2



PK #
2182

1: 35.559.5 Double Hung, Equal
 Frame Size: 35 1/2 X 59 1/2
 Unit Type: No Program
 General Information: No Package, Without Hinged Glass Panel, Clad, Pine, 5", 3 11/16", Jambliner Color: Black
 Exterior Color / Finish: Standard Enduraclad, Black
 Interior Color / Finish: Bright White Paint Interior
 Glass: Insulated Low-E Advanced Low-E Insulating Glass Argon Non High Altitude
 Hardware Options: Cam-Action Lock, 2 Locks, White, No Limited Opening Hardware, No Sash Lift, No Integrated Sensor
 Screen: Full Screen, Black, InView™
 Performance Information: U-Factor 0.30, SHGC 0.30, VLT 0.57, CPD PEL-N-35-00514-00001, Performance Class LC, PG 35, Calculated Positive DP Rating 35, Calculated Negative DP Rating 35, STC 27, OITC 23, Clear Opening Width 32.312, Clear Opening Height 26.5, Clear Opening Area 5.946306, Egress Meets minimum clear opening and 5.7 sq.ft
 Grille: No Grille,
 Wrapping Information: Foldout Fins, Factory Applied, No Exterior Trim, 6 9/16", 7 7/8", Standard Four Sided Jamb Extension, Factory Applied, Manufacturer Recommended Clearance, Perimeter Length = 190".

Viewed From Exterior

Rough Opening: 36 - 1/4" X 60 - 1/4"

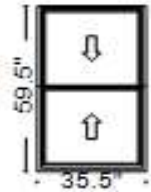
Customer Notes: 6 9/16 JAMB EXTENSION FOR 2X6 WALL

Line #	Location:	Attributes
--------	-----------	------------

55 BEDROOM 3

Lifestyle, Double Hung, 35.5 X 59.5, Without HGP, Black

Qty
2



PK #
2182

1: 35.559.5 Double Hung, Equal
 Frame Size: 35 1/2 X 59 1/2
 Unit Type: No Program
 General Information: No Package, Without Hinged Glass Panel, Clad, Pine, 5", 3 11/16", Jambliner Color: Black
 Exterior Color / Finish: Standard Enduraclad, Black
 Interior Color / Finish: Bright White Paint Interior
 Glass: Insulated Low-E Advanced Low-E Insulating Glass Argon Non High Altitude
 Hardware Options: Cam-Action Lock, 2 Locks, White, No Limited Opening Hardware, No Sash Lift, No Integrated Sensor
 Screen: Full Screen, Black, InView™
 Performance Information: U-Factor 0.30, SHGC 0.30, VLT 0.57, CPD PEL-N-35-00514-00001, Performance Class LC, PG 35, Calculated Positive DP Rating 35, Calculated Negative DP Rating 35, STC 27, OITC 23, Clear Opening Width 32.312, Clear Opening Height 26.5, Clear Opening Area 5.946306, Egress Meets minimum clear opening and 5.7 sq.ft
 Grille: No Grille,
 Wrapping Information: Foldout Fins, Factory Applied, No Exterior Trim, 4 9/16", 5 7/8", Standard Four Sided Jamb Extension, Factory Applied, Manufacturer Recommended Clearance, Perimeter Length = 190".

Viewed From Exterior

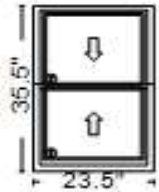
Rough Opening: 36 - 1/4" X 60 - 1/4"

Line #	Location:	Attributes
--------	-----------	------------

60 BATHROOM 3/UPSTAIRS

Lifestyle, Double Hung, 23.5 X 35.5, Without HGP, Black

Qty
1



Viewed From Exterior

Rough Opening: 24 - 1/4" X 36 - 1/4"

PK #
2182

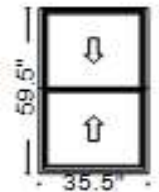
1: 23.535.5 Double Hung, Equal
 Frame Size: 23 1/2 X 35 1/2
 Unit Type: No Program
 General Information: No Package, Without Hinged Glass Panel, Clad, Pine, 5", 3 11/16", Jambliner Color: Black
 Exterior Color / Finish: Standard Enduraclad, Black
 Interior Color / Finish: Bright White Paint Interior
 Glass: Insulated Tempered Low-E Advanced Low-E Insulating Glass Argon Non High Altitude
 Hardware Options: Cam-Action Lock, 1 Lock, White, No Limited Opening Hardware, No Sash Lift, No Integrated Sensor
 Screen: Full Screen, Black, InView™
 Performance Information: U-Factor 0.30, SHGC 0.30, VLT 0.56, CPD PEL-N-35-00517-00001, Performance Class LC, PG 50, Calculated Positive DP Rating 50, Calculated Negative DP Rating 50, STC 27, OITC 23, Clear Opening Width 20.312, Clear Opening Height 14.5, Clear Opening Area 2.045305, Egress Does not meet typical United States egress, but may comply with local code requirements
 Grille: No Grille,
 Wrapping Information: Foldout Fins, Factory Applied, No Exterior Trim, 4 9/16", 5 7/8", Standard Four Sided Jamb Extension, Factory Applied, Manufacturer Recommended Clearance, Perimeter Length = 118".

Line #	Location:	Attributes
--------	-----------	------------

65 BEDROOM 4

Lifestyle, Double Hung, 35.5 X 59.5, Without HGP, Black

Qty
1



Viewed From Exterior

Rough Opening: 36 - 1/4" X 60 - 1/4"

PK #
2182

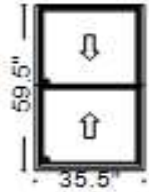
1: 35.559.5 Double Hung, Equal
 Frame Size: 35 1/2 X 59 1/2
 Unit Type: No Program
 General Information: No Package, Without Hinged Glass Panel, Clad, Pine, 5", 3 11/16", Jambliner Color: Black
 Exterior Color / Finish: Standard Enduraclad, Black
 Interior Color / Finish: Bright White Paint Interior
 Glass: Insulated Low-E Advanced Low-E Insulating Glass Argon Non High Altitude
 Hardware Options: Cam-Action Lock, 2 Locks, White, No Limited Opening Hardware, No Sash Lift, No Integrated Sensor
 Screen: Full Screen, Black, InView™
 Performance Information: U-Factor 0.30, SHGC 0.30, VLT 0.57, CPD PEL-N-35-00514-00001, Performance Class LC, PG 35, Calculated Positive DP Rating 35, Calculated Negative DP Rating 35, STC 27, OITC 23, Clear Opening Width 32.312, Clear Opening Height 26.5, Clear Opening Area 5.946306, Egress Meets minimum clear opening and 5.7 sq.ft
 Grille: No Grille,
 Wrapping Information: Foldout Fins, Factory Applied, No Exterior Trim, 4 9/16", 5 7/8", Standard Four Sided Jamb Extension, Factory Applied, Manufacturer Recommended Clearance, Perimeter Length = 190".

Line #	Location:	Attributes	Qty
--------	-----------	------------	-----

70 BEDROOM 2

Lifestyle, Double Hung, 35.5 X 59.5, Without HGP, Black

Qty
1



PK #
2182

Viewed From Exterior

Rough Opening: 36 - 1/4" X 60 - 1/4"

1: 35.559.5 Double Hung, Equal
 Frame Size: 35 1/2 X 59 1/2
 Unit Type: No Program
 General Information: No Package, Without Hinged Glass Panel, Clad, Pine, 5", 3 11/16", Jambliner Color: Black
 Exterior Color / Finish: Standard Enduraclad, Black
 Interior Color / Finish: Bright White Paint Interior
 Glass: Insulated Tempered Low-E Advanced Low-E Insulating Glass Argon Non High Altitude
 Hardware Options: Cam-Action Lock, 2 Locks, White, No Limited Opening Hardware, No Sash Lift, No Integrated Sensor
 Screen: Full Screen, Black, InView™
 Performance Information: U-Factor 0.30, SHGC 0.30, VLT 0.56, CPD PEL-N-35-00517-00001, Performance Class LC, PG 35, Calculated Positive DP Rating 35, Calculated Negative DP Rating 35, STC 27, OITC 23, Clear Opening Width 32.312, Clear Opening Height 26.5, Clear Opening Area 5.946306, Egress Meets minimum clear opening and 5.7 sq.ft
 Grille: No Grille,
 Wrapping Information: Foldout Fins, Factory Applied, No Exterior Trim, 4 9/16", 5 7/8", Standard Four Sided Jamb Extension, Factory Applied, Manufacturer Recommended Clearance, Perimeter Length = 190".

Thank You For Your Interest In Pella® Products