

**KNOXVILLE HISTORIC ZONING COMMISSION
STAFF REPORT - CERTIFICATE OF APPROPRIATENESS APPLICATION**

MEETING DATE: 2/21/2008

► FILE NO.: 20608EDG

APPLICANT: Charles B. Hassenboehler, Jr (Owner)

ADDRESS OF PROPERTY: 1904 Washington Ave

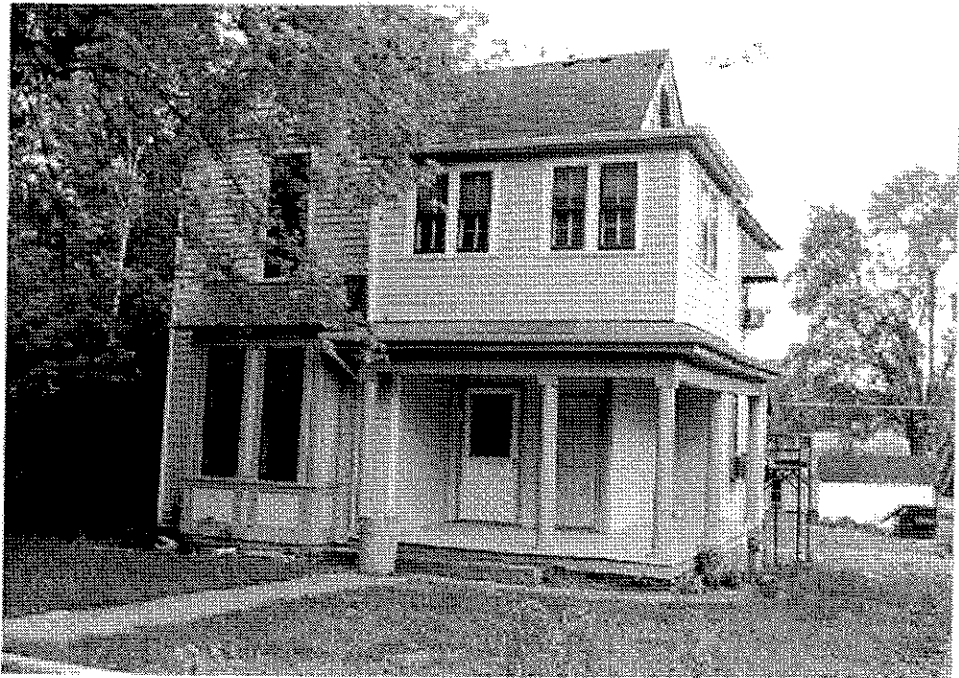
HISTORIC DISTRICT: Edgewood-Park City H-1

TYPE OF WORK: Level II Replacement/repair

- DESCRIPTION OF WORK: Repair foundation; remove second story front added room and restore porch, if it was a porch, adding window to match historic windows; siding repair in kind; repair windows; remove added front door, replacing with matching window; remove storm door; remove rear fire stair

PROPERTY DESCRIPTION: Eastlake (c.1885)

Two story frame with weatherboard wall covering, fishscale shingles at gables. Cross gable roof with asphalt shingle covering and sawn wood circular attic vent. One story wrap around front and side porch with round wood columns with Doric capitals. One story projecting two window bay on front elevation with diagonally laid beadboard and paneled trim panels below windows. Enclosed second story porch addition on front elevation. Interior offset brick chimney has been removed as part of Certificate issued 9/15/2005, but work is still underway on remainder of exterior work. Irregular plan.



► APPLICABLE DESIGN GUIDELINES:

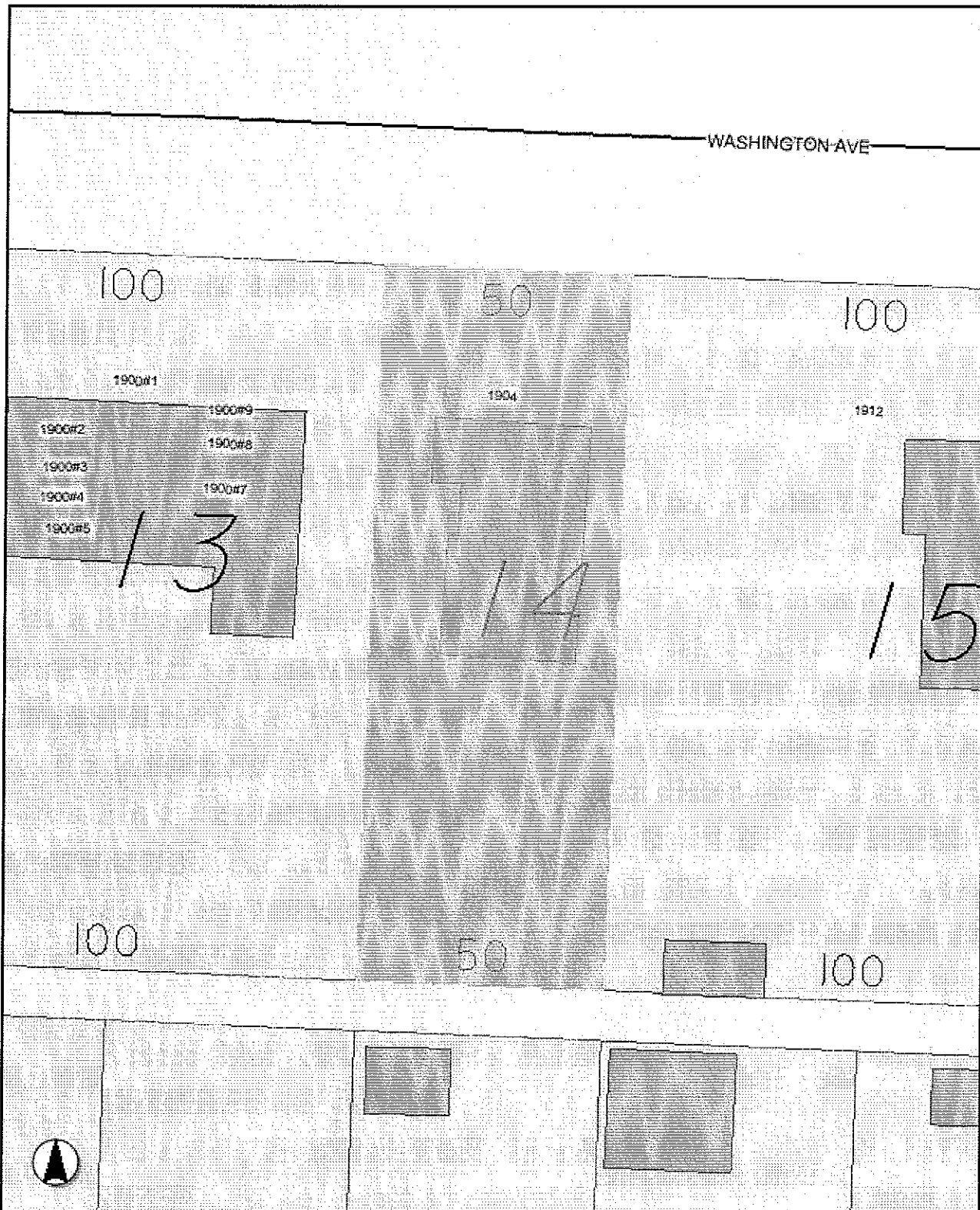
Edgewood-Park City Design Guidelines, adopted by the Knoxville City Council on July 29, 1997

► STAFF RECOMMENDATION:

APPROVE Certificate No. 20608EDG. Proposed changes are consistent with design guidelines and will remove alterations and return the house to its original appearance.

COMMENTS:

The work items duplicate work items included in an earlier certificate, but not yet completed.



© KGIS 2008 0 29ft

1904 Washington. Certificate No. 20608EDG. Knoxville Historic Zoning Commission Meeting of February 21, 2008

KGIS - 606 Main St - Suite 150 - Knoxville, TN 37902 - www.kgis.org Printed: Fri Feb 8 2008
 Disclaimer: KGIS makes no representation or warranty as to the accuracy of this map and its information nor to its fitness for use. Any user of this map product accepts the same AS IS, WITH ALL FAULTS, and assumes all responsibility for the use thereof and further covenants and agrees to hold KGIS harmless from any and all damage, loss, or liability arising from any use of this map product. KGIS - Copyright © 2007