

P5-K2  
1966

X P

annual



th year  
report

1966

KNOXVILLE - KNOX COUNTY

*mpc*

# CONTENTS

	SECTION
Background	1
Planning Commission	2
Organization	3
Administration	3
Financing	4
Planning	4
Special Studies	5
Current Planning	6
Comprehensive Planning	7
Population	8
Beautification	8
CBD	8
Recreation	9
Highways	9
Industry	9
Facilities	10
Publications	10



METROPOLITAN PLANNING COMMISSION

p.o. box 1646 · knoxville, tennessee 37901 · city hall park · phone 524-8618

July 27, 1966

Citizens of Knoxville and Knox County  
Hon. Leonard R. Rogers, Mayor of Knoxville  
Hon. C. Howard Bozeman, Knox County Judge  
Members of the Metropolitan Planning Commission

Gentlemen:

The Director and staff of the Metropolitan Planning Commission are pleased to submit the annual report for the fiscal year ending June 30, 1966.

Previous annual reports have been entitled "Plans and Projects." Since this report represents the Metropolitan Planning Commission's tenth year in operation, we have chosen to vary the format so that we not only show plans of last year and projects for the coming year, but also some of the trends and planning efforts which have occurred over the past ten years.

For the first time in several years, Metropolitan Planning Commission has a full staff. We wish to express our appreciation to both Knox County and the City of Knoxville for their concern with planning and their efforts in allocating an adequate planning budget.

The staff hopes that you will find last year's progress to be as significant as we believe it to be and that the few innovations in this annual report meet with your approval.

Sincerely,

*W. C. McCammon*

W. C. McCammon,  
Executive Director

WCM:h

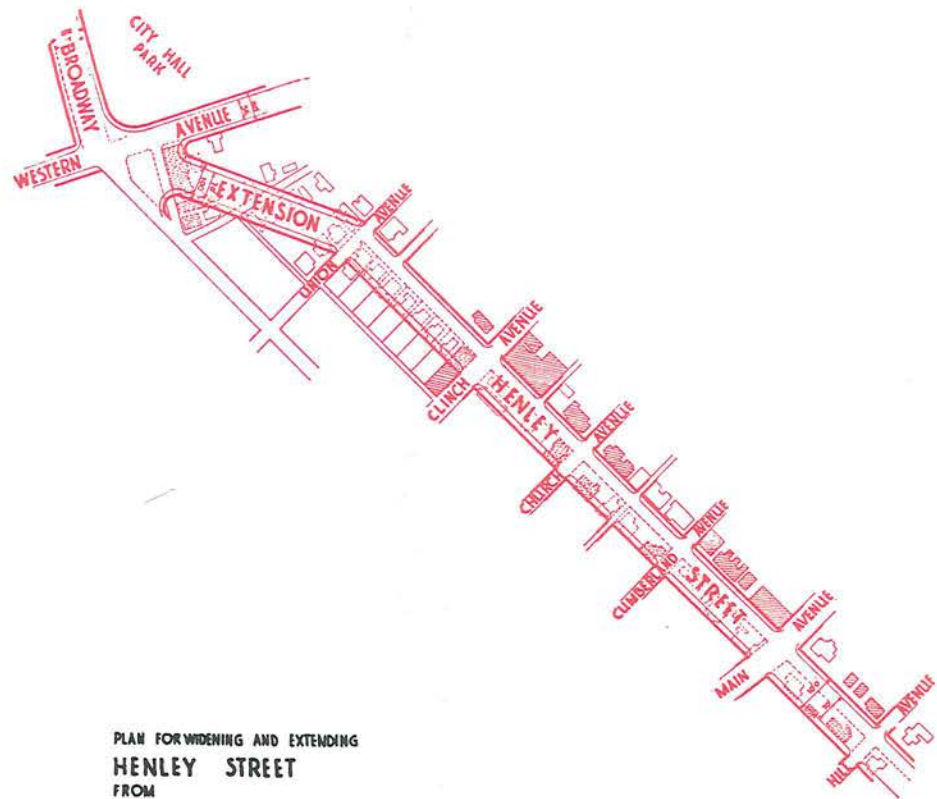
METROPOLITAN PLANNING COMMISSION

KNOXVILLE — KNOX COUNTY 1966

annual



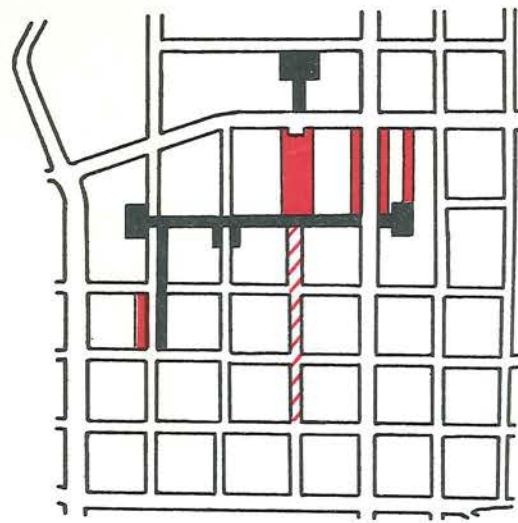
th year  
report



PLAN FOR WIDENING AND EXTENDING  
HENLEY STREET  
FROM  
HILL AVENUE TO BROADWAY

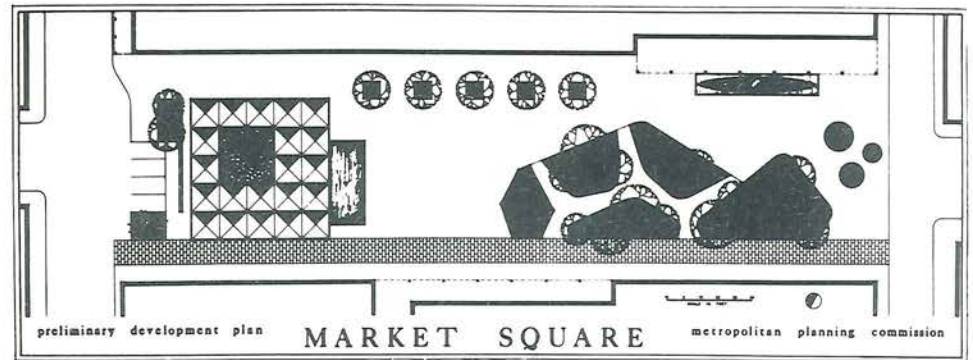
Planning in Knoxville dates back to 1925 when the city established one of the nation's first planning commissions. A few years later, in 1930, a "Comprehensive City Plan for Knoxville" was published. While some elements of the 1930 plan have long since been forgotten, several parts of the plan have been carried out.





### The Pedestrian Walkway Plan 1961

- accomplished
- currently proposed
- not yet considered



Ten years ago in 1956, the City of Knoxville joined with Knox County and formed the Metropolitan Planning Commission. Civic leaders of city and county had realized that piecemeal planning could not solve the overall problems of urbanization and that many older plans were gathering dust upon the shelves.

Four members of the fifteen man commission have served continuously since its founding in 1956.



Dr. William E. Cole, Chairman, Professor of Sociology at University of Tennessee

Harry B. Tour, Vice-Chairman former Chief Architect for TVA



Judge C. Howard Bozeman, an ex officio member representing Knox County



D. Neal Adams, represents the Knox County Quarterly Court

---

## planning

---

Over the past ten years, the men responsible for planning in the Knoxville region have been the members of the Metropolitan Planning Commission. Both citizen members who are appointed for four year overlapping terms and representatives of local government have served long hours without remuneration in order to express their interest in a better community.

---

One vacancy exists on the Commission resulting from the resignation of Dr. James A. Colston, the former President of Knoxville College. The remaining ten members are:

H. Pat Wood, Secretary, representing the Knox County Quarterly Court

Mayor Leonard R. Rogers, an ex officio member representing the City of Knoxville

Junius B. French, citizen member appointed by the City

Harry M. Nacey, Jr., a citizen member who is the direct representative of the Tennessee State Planning Commission

Milton Roberts, City Councilman representing the City of Knoxville

George R. Sliger, City Councilman representing the City of Knoxville

James L. Thomas, Jr., citizen member appointed by Knox County

U. G. Turner, Jr., citizen member appointed by the City

---

## commission

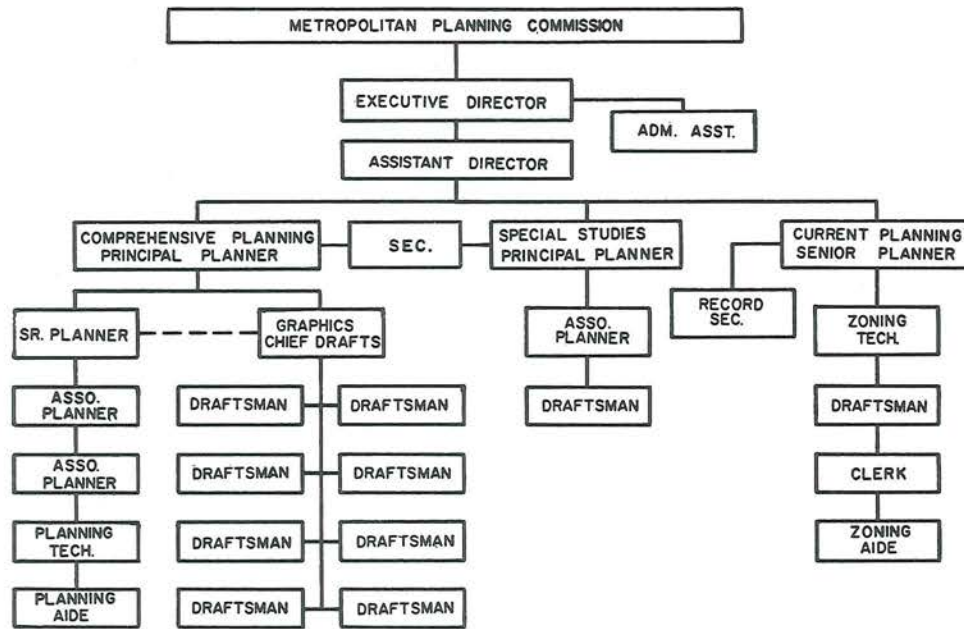
---

William C. Tallent, County Commission representing Knox County

Julian P. Link, citizen member appointed by the City

---

The professional staff of the Metropolitan Planning Commission is organized in three divisions under the direction of the Executive Director. Each division of the Metropolitan Planning Commission's staff is supervised by a principal planner or senior planner and contains both professional personnel and necessary nontechnical personnel.



## organization

Presently, the MPC staff includes 9 professional planners with education or experience in the field of urban planning and a total staff of 27 persons. In 1956, MPC employed 5 planners making a total personnel of 17. Last year, the staff consisted of 7 planners and a total of 21 employees.





The planning staff is administered by the Executive Director, W. C. McCammon, his Assistant Director, Frank Brutt, and Mrs. Hazel Hall, the Administrative Assistant. Mr. McCammon was instrumental in founding MPC and was promoted to Director upon the illness of Joe Whitlow, the first Director of Planning. Mr. Brutt joined the staff in August 1964 from Metroplan of Little Rock, Arkansas, where he was Senior Planner. Mrs. Hall has been secretary and administrative assistant to the Director since 1956.

---

# administration

---

# budget

Growth of planning in the Knoxville regions may be illustrated by the change in budget throughout the years. In 1956, the original estimate of expenditures amounted to \$66,000 while next year's budget exceeds \$285,000.

Last year, MPC changed its fiscal year to a July through June budget period. The fiscal year is now the same as that of Knox County which should simplify the budget accounting.

## Budget for 1956 - 1957

A. <u>Revenue</u>	
City and County	46,695
Federal Grants	<u>16,000</u>
	65,695
B. <u>Expenditures</u>	
Salaries	44,550
Equipment	7,600
Telephone	720
Supplies and Printing	1,650
Transportation	1,675
Consultant Fees	<u>9,500</u>
	65,695

---

# financing

---

Budget for 1966 - 1967

A. <u>Revenue</u>	P 31	5,000
City of Knoxville		60,000
Knox County		75,000
Fees		14,000
"701" (DHUD)		79,000
Air Pollution (DHEW)		26,750
Dept. of Civil Defense		<u>27,250</u>
		287,000

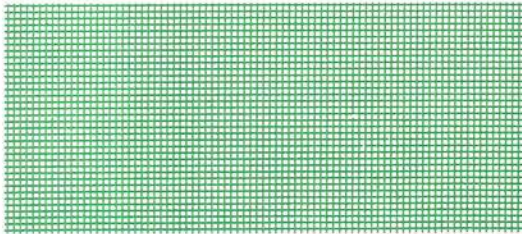
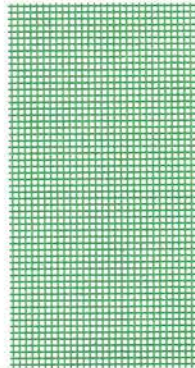
Budget for 1965 - 1966

A. <u>Revenue</u>		
City of Knoxville	62,000	
Knox County	58,180	
Fees	12,905	
Federal Grants	<u>21,948</u>	
	155,033	
B. <u>Expenditures</u>		
Salaries	121,713	
Equipment	2,323	
Operating	8,807	
Supplies and Printing	9,486	
Transportation	7,646	
Consultants	<u>5,061</u>	
	155,033	

B. <u>Expenditures</u>		
Salaries	167,000	
Equipment	1,200	
Operating	10,100	
Supplies and Printing	10,700	
Transportation	5,500	
Special Projects	14,500	
Consultants	<u>78,000</u>	
	287,000	

planning

In 1965, a new division was added to the existing divisions of advance planning and operations. Originally, this division was established to promote and initiate an electronic data processing system for MPC, the city, and county. While some delays have ensued in the EDP systems, the section has been expanded in functions and now is conducting a Community Shelter Program supervised by principal planner Chet Foster and his associate John Brock. The division will soon embark on an air pollution study and special technical personnel will be added to the staff for this program.



---

special

---



The need for a plan to provide the maximum number of persons with protection from radiation in case of nuclear war is a responsibility of the Department of Defense. Detailed planning for shelter is delegated to State and local planning agencies because urban and regional planners have the particular skills which can result in meeting the objectives of the program. The office of Civil Defense has a community shelter plan programmed which includes six major steps. The first is the allocation of people to the best available shelters. The second is to provide the people with the information needed to get to the shelter. The third is to identify current and future shelter deficits. The fourth is to establish local procedures to develop shelters in areas where a shortage exists. The fifth is to develop directives for periodic updating of the plan, and the sixth is to get the plan adopted by the communities involved.

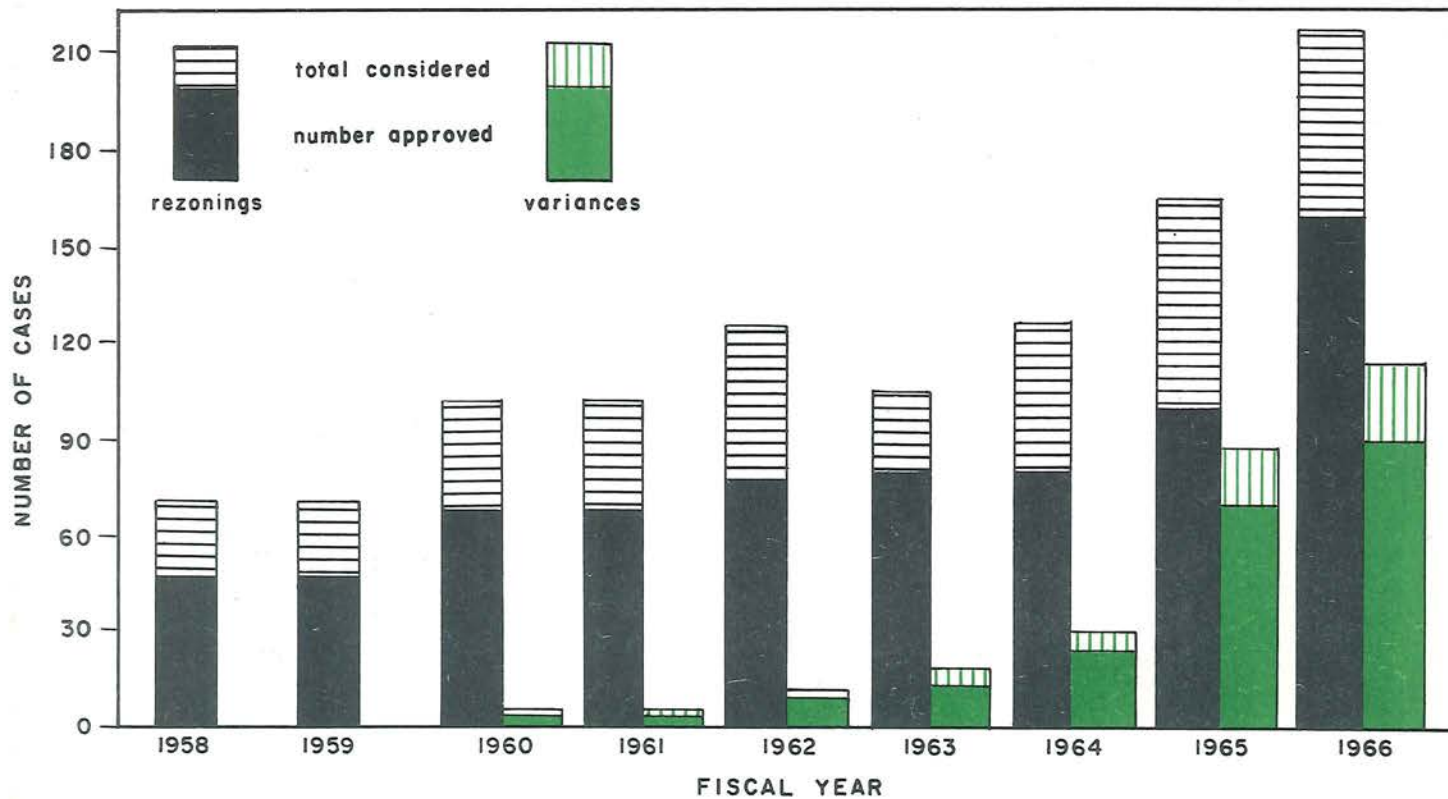
The CSP is being developed for Anderson, Blount, and Knox Counties because OCD insists on treating Standard Metropolitan Statistical Areas as entities. Agreement of the political leaders and the Planning Commission was needed before a contract could be negotiated. Funding is 100% by the OCD through the Corps of Engineers, U.S. Army.



---

studies

---



## zoning cases

The Current Planning Division is primarily responsible for the processing of rezoning requests, approval of subdivision plats, house numbering, and the distribution of MPC maps. Since "Bill" McCammon was promoted to Director, this section has been without a planner in charge. MPC is fortunate in having hired Harron Armstrong as head of the current planning section. Mr. Armstrong was previously with the Western North Carolina Regional Planning Commission and the Asheville Buncombe County Metropolitan Planning Board.



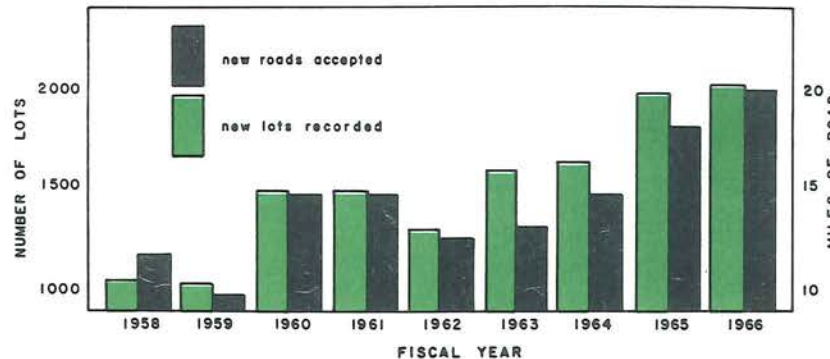
## current

During the past year, applications for zoning consideration continued on an upward trend. At the same time, the current planning staff considered fewer subdivisions than in 1965. Subdivisions, however, have become larger, and a greater total number of lots was reviewed.



<u>Zoning Item</u>	<u>1965</u>	<u>1966</u>	<u>Subdivisions</u>	<u>1965</u>	<u>1966</u>
Rezoning heard	162	215	Multi lot considered	114	100
Rezoning approved	100	159	Multi lot approved	106	95
Variance applied for	88	110	One lot considered	480	453
Variance approved	70	89	One lot approved	480	453
Reviews heard	51	62	Total lots recorded	1974	2169
Reviews approved	39	41	Miles of new		
Parking lots approved	70	134	subdivision streets	18.15	20.33
Street closures approved	14	20			

## subdivision reviews





Last year the name Advance Planning was changed to the more inclusive title of Comprehensive Planning. This division has traditionally performed not only the long range planning for Knoxville and Knox County but also made many short and middle range studies for the area.

The Comprehensive Planning staff is the largest of the MPC divisions and consists of four professional planners: Tom Crossman, Principal Planner, Glen Erickson, Senior Planner, and Associate Planners Charles Carrington and Tom Kipp.



---

comprehensive



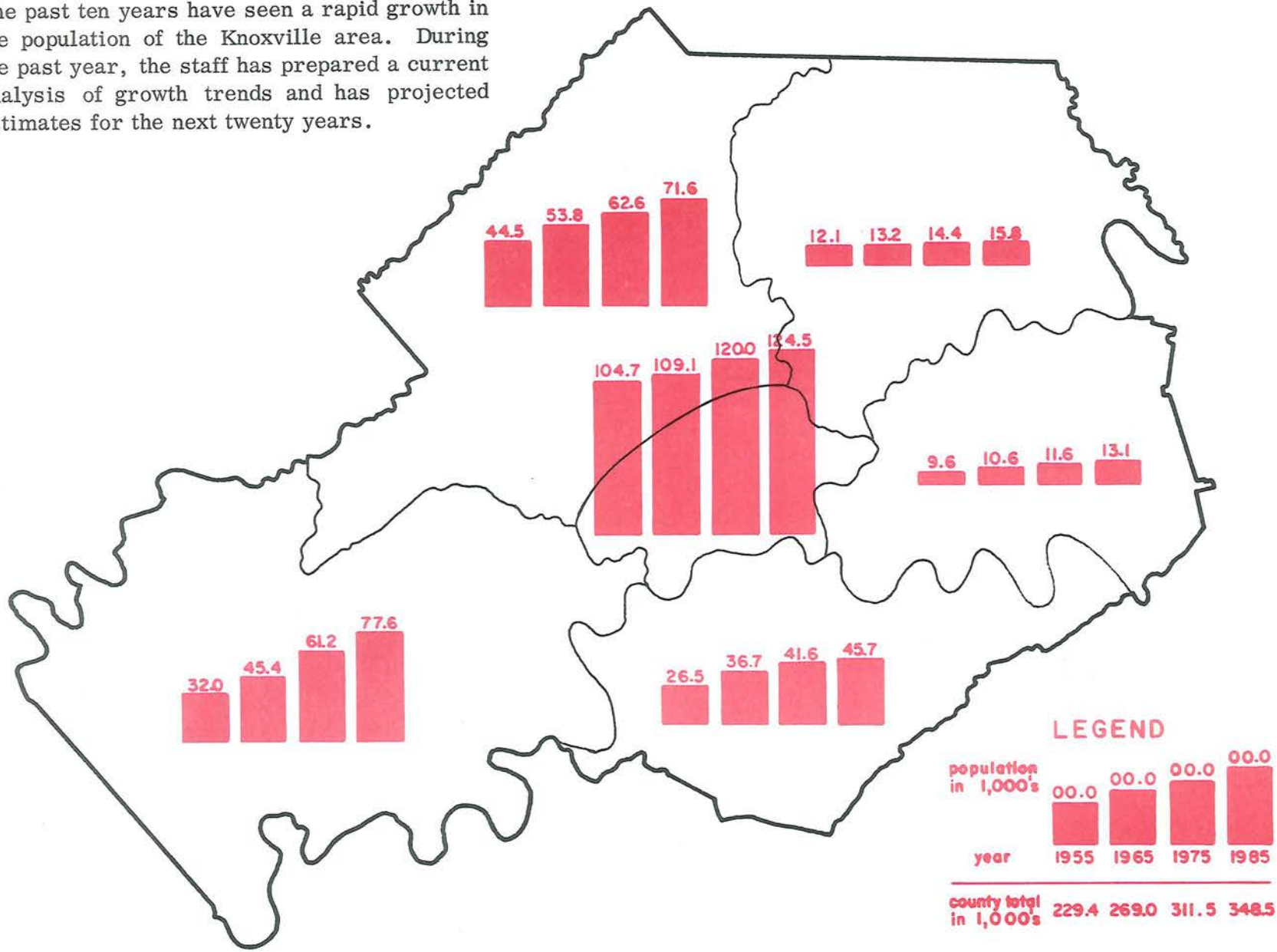


The drafting and graphics section under the supervision of Mrs. Vivian Burch, is also part of the Comprehensive Planning staff, although, drafting work is performed for all MPC divisions.



planning

The past ten years have seen a rapid growth in the population of the Knoxville area. During the past year, the staff has prepared a current analysis of growth trends and has projected estimates for the next twenty years.



**POPULATION ESTIMATES BY SECTOR**

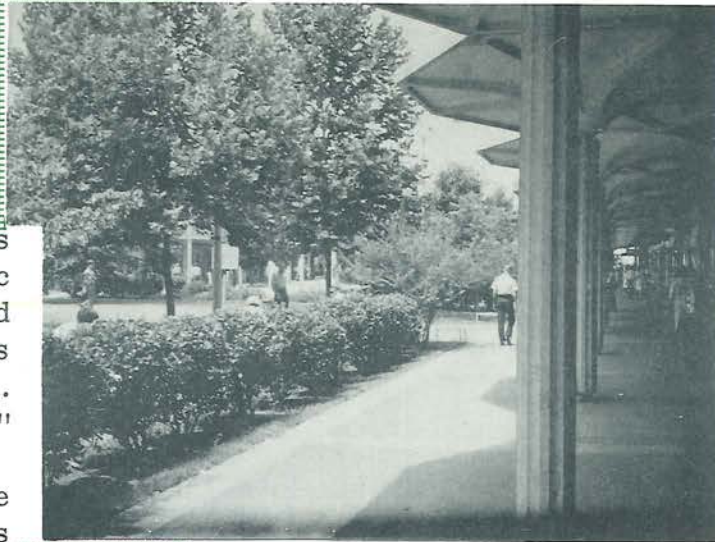
population



## beautification

Concern with the ugliness of the urban area has been expressed by many citizen groups and public officials. President Johnson has recognized ugliness as a national problem. "A few years ago we were concerned about the ugly American. Today, we must act to prevent an ugly America."

MPC is continually striving to improve the aesthetics in the Knoxville area. These efforts are typified th the "Urban Beautification and Improvement Plans" completed this year and the Visual Urban Environment survey proposed for an ensuing project.



## cbd planning

During the past year, MPC devoted considerable time to preparing preliminary designs and a model for redevelopment of the 500 and 600 blocks of Market Street. The Downtown Knoxville Association has adopted the MPC plans in principle and hired an architect to prepare the final plans.

Detailed CBD projects of this type are a continuing effort on the part of MPC to improve both the appearance and business climate in downtown Knoxville.



## beautification

## recreation

Whereas the recreation plans for Knoxville and Knox County were prepared a few years ago, the staff at MPC has been cooperating with city and county agencies in obtaining additional land through open space programs and in assisting with site design and aesthetic improvement recommendations.



## highways

Street and highway locations and improvements are a continuing planning effort. MPC Director, Bill McCammon, is Chairman of the coordinating committee for the Comprehensive Transportation plan and several other staff members have devoted much time to street and highway planning projects.



During the past year, MPC amended this major road plan and caused it to be recorded with the County Register of Deeds; the staff submitted suggested designs for the east leg of the downtown loop; a study was made of the best location for the new Tennessee River Bridge; and several street location plans and industrial access roads were planned.

The importance of street and road planning is clearly evident and the MPC staff devotes a large proportion of its time to this activity.

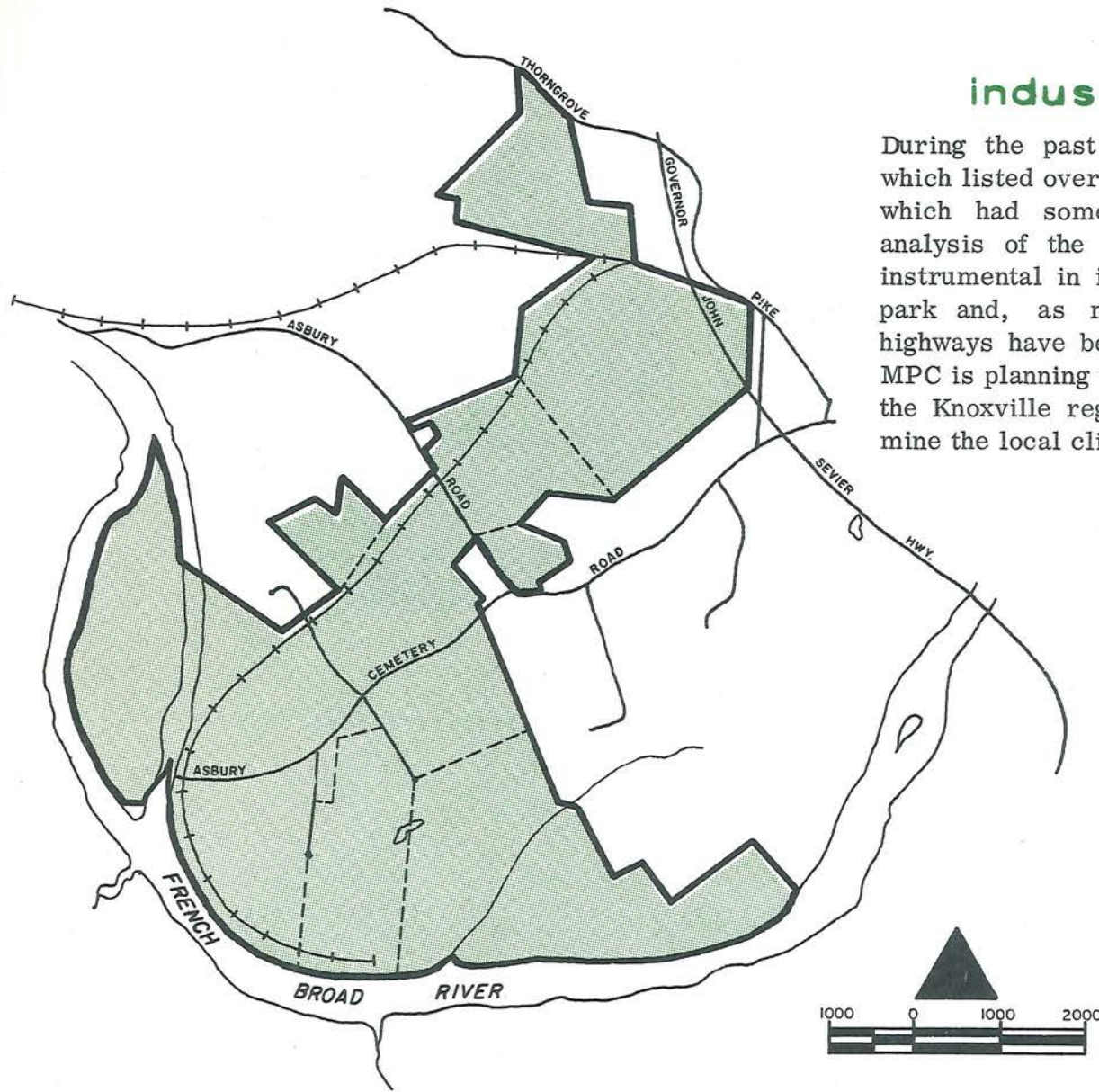
recreation

highways



## industry in knoxville

During the past year, MPC completed a site study which listed over 20,000 acres of land in Knox County which had some industrial potential. A detailed analysis of the area at the Forks of the River was instrumental in initiating this area as an industrial park and, as mentioned in the previous section, highways have been planned to serve industrial sites. MPC is planning to undertake a study which will update the Knoxville region's economic base data and determine the local climate for industry.

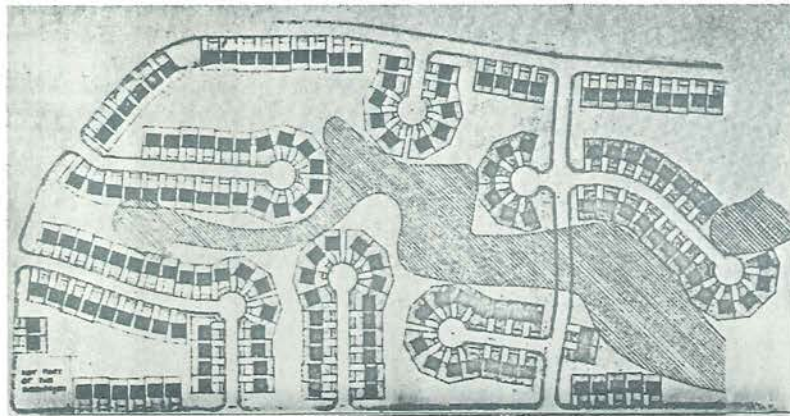


industry

## urban facilities

As the urban area continues to expand so does the need for public facilities to serve the residence. The Planning Commission staff has made several location studies on behalf of the schools and has frequently been consulted by city and county libraries. Detailed studies completed in former years have provided the basis for neighborhood unit analysis sheets which are being published at the present time.

Foremost among the commission's future planning efforts will be a detailed study of the recommended location and financial feasibility of county sewer systems. Such systems will be needed to serve the rapidly growing residential areas and potential industrial areas outside of the city limits.



## other studies

Other studies completed last year but not yet published include a summary development plan, a study of land use near freeway interchanges, subdivision regulations, and several smaller studies of specific areas of the city and county, with particular emphasis upon the neighborhood adjacent to the University of Tennessee.

# facilities



Riverfront-Willow Street Development Project  
 Metropolitan Knoxville Traffic and Circulation  
 Zoning Standards for Shopping Centers. . . Industry  
 Community Facilities-Parts I and II  
 Knox County Industrial Land Needs  
 Planning Unit Analysis  
 Proposed Adjustment Interchange No. 4 Interstate Rt. 40  
 Land Use Analysis  
 Community Facilities Plan: Knoxville  
 A Study of Urban Knoxville  
 Knoxville Land Use Plan  
 Major Thoroughfare Plan  
 Sanitary Sewer Study-Part I and Part II  
 Public Improvements Program 1961-1966  
 Traffic Study-University of Tennessee  
 Recreation Plan  
 Sequoyah Hills Park  
 Preliminary Analysis Jo H. Anderson Property  
 Knoxville-Knox County Land Use Plan  
 Zoning Prospectus  
 Knoxville Supplementary Planning Unit Analysis Housing  
 A Public Improvements Program for Knoxville Stage I  
 Preliminary Analysis Weigel-Lyons Property  
 Schools of Knoxville and Knox County  
 The Population of Knoxville-Knox County  
 The Economy of Metropolitan Knoxville  
 Recommended Zoning Regulations  
 Chilhowee Park Development Study  
 Libraries of Knoxville and Knox County

Knoxville-Knox County Comprehensive Transportation Study:  
 Statistical Summary of Planning Units and Traffic Zones  
 Current Street Use Classification  
 Mass Transportation in the Knoxville Metropolitan Area  
 Parking Needs, Knoxville, Tennessee  
 Traffic Accidents  
 Transportation Administration  
 Origin and Destination Survey and Transportation Plan  
 Origin and Destination Survey and Statistical Data  
 Summary Report  
 Zoning Ordinance-City of Knoxville  
 Capital Improvements Program and Budget  
 Special Rezoning Study of the University Area  
 Parking Plan-Knoxville, Tennessee, Central Business District  
 Recreation Outlook  
 EDP Feasibility Study  
 Land-Use Manual  
 1965 Industrial Site Survey, Knoxville-Knox County  
 Urban Beautification and Improvement Plan for Knoxville,  
 Tennessee
